



**Balance of Payments  
of the  
Kyrgyz Republic**

**First half of 2003**

**October 2003**

---

**Bishkek**

EDITORIAL  
BOARD:

Chairman: L. Tsyplakova.  
Board Members: S. Abdybaly tegin,  
G. Dyikanbaeva,  
Z. Chokoev,  
N. Tynaev,  
Y. Bushman.  
Executive Secretary: D. Esenaliev.

The following officers are the key compilers of this publication:  
D. Esenaliev, J. Eraliev, N. Imaralieva, M. Kakeev, M. Satkeeva, and A. Kurmanalieva

Founder – National Bank of the Kyrgyz Republic  
The periodical is registered with the Ministry of Justice of the Kyrgyz Republic  
Registration number 605

© Reprint shall be subject to authorization by the National Bank of the Kyrgyz Republic,  
while in citing references to a source of information shall be mandatory.

Printed by the printing center of the Banking Herald magazine office  
265 Chuy av., Bishkek, 720071  
Tel: (312) 657693, 243801  
Fax: (312) 657693

## ***Balance of Payments of the Kyrgyz Republic***

Balance of Payments of the Kyrgyz Republic prepared by the National Bank of the Kyrgyz Republic. This issue reflects recent external sector trends and contains tables with data on the balance of payments, analytic and standard presentation formats, a pattern of foreign trade, international reserves, external debt, the balance of payments compilation methodology and data base, as well as on the Kyrgyz Republic's international investment position. The NBKR shall reserve the right to revise the balance of payments data for a period of 10 years. Due to changes in a methodology or revisions made by the National Statistical Committee in data applied herein, there could be revisions of the specific data, hence, the period of 10 years shall be considered as subject to revisions. It is published on a quarterly basis – in January, May, July, and October. It is published in three languages: Kyrgyz, Russian, and English.

**The final update date for the present edition** is October 20, 2003

### **Notation:**

- ... data are not available;
- indicators are equal to 0 (zero) or negligible;
- period between years or months (for example, 1994 – 1996 or January - June).

Due to rounding of numbers there could be discrepancies in the numbers following a dot.

Address editorial correspondence to:

tel.: (312) 66-90-57, 66-90-56

Address: 101 Umetaliev Str., Bishkek, 720040  
National Bank of the Kyrgyz Republic,  
Economic Department,  
Balance of Payments Division.

E-mail: [damir.esenaliev@nbkr.kg](mailto:damir.esenaliev@nbkr.kg)

## **Other publications of the National Bank of the Kyrgyz Republic**

### ***Annual Report of the National Bank of the Kyrgyz Republic***

The annual report is the NBKR's full account of the work during the reporting year. It contains a short description of real sector developments in the economy of the republic and decisions and actions of the National Bank in the monetary sphere. It comprises information on economic development and a monetary policy, financial reporting, general data on the National Bank, and statistical annexes. It is published in three languages: Kyrgyz, Russian, and English.

### ***Bulletin of the National Bank of the Kyrgyz Republic***

The Bulletin of the NBKR contains macroeconomic indicators of the Kyrgyz Republic on the real, financial, and external sectors of the economy, information on prices, and social indicators. Data from departments of the National Bank, as well as from commercial banks, the Ministry of Finance of the Kyrgyz Republic, the National Statistics Committee of the Kyrgyz Republic, and the National Commission for the Securities Market of the Kyrgyz Republic are used for its compilation. It is published on a monthly basis in Kyrgyz, Russian, and English.

### ***Review of inflation on the Kyrgyz Republic***

Review of inflation in the Kyrgyz Republic contains a description of inflation developments by components in the regional context, and, in general, the analysis of inflation factors and the inflation forecast for the forthcoming quarter. It is published on the quarterly basis in Kyrgyz, Russian and English.

### ***Banking System Development Trends***

The purpose of the "Banking System Development Trends" is to study and assess development of the banking system in Kyrgyzstan, as an official intermediary, to identify obstacles to achievement and maintenance of stability, as well as to estimate elements of stability in the banking system of Kyrgyzstan. It is published as of January 1 and July 1 in Kyrgyz and Russian.

### ***Statutory Acts of the National Bank of the Kyrgyz Republic***

The goal of the publication "Statutory Acts of the National Bank of the Kyrgyz Republic" is to officially publish the statutory acts of the National Bank to furnish the commercial banks and the public with the normative documents of the National Bank and official information about performance of the National Bank, as well as to promulgate the banking legislation of the Kyrgyz Republic. Assumptive periodicity of the journal is to publish once a month (as the statutory acts are approved) in Kyrgyz, Russian and English.

### ***Press Release of the National Bank of the Kyrgyz Republic***

Press Release of the NBKR contains a chronicle of events in the National Bank and the financial market basic data. It is published on a weekly basis in Kyrgyz and Russian.

All of the publications are distributed in compliance with the lists approved through the Orders of Chairman of the National Bank of the Kyrgyz Republic and are placed on the web-site of the NBKR: <http://www.nbkr.kg>

## List of Abbreviations

ADB	Asian Development Bank
BOP	Balance of Payments
CB	Commercial Banks
CIF	The price on the frontier of the importing country (cost, insurance, freight), including: a) the f.o.b value of commodities, that is, their value to the frontier of the exporting country, b) transportation costs as well as costs of insurance services from the frontier of the exporting country to the customs house of the importing country
CIS	Commonwealth of Independent States
CPI	Consumer Price Index
EBRD	European Bank for Reconstruction and Development
EEC	European Economic Community
FOB	The price on the frontier of the exporting country (free on board), including the value of the commodity delivered to the frontier of the exporting country, that is, the producers' price, trade markups, transportation costs to the frontier of the exporting country, loading costs with respect to any type of international transport, as well as export taxes
GDP	Gross Domestic Products
HS	Harmonized system
IMF	International Monetary Fund
ISCC	International Standard Commodity Classification
ITRS	International Transactions Reporting System
KR	Kyrgyz Republic
MA	Monetary Authorities
MFA	Ministry of Foreign Affairs of the Kyrgyz Republic
MFKR	Ministry of Finance of the Kyrgyz Republic
MTC	Ministry of Transport and Communications of the Kyrgyz Republic
NBKR	National Bank of the Kyrgyz Republic
NEER	Nominal Effective Exchange Rate
Non-CIS	Non-CIS countries
NSC	National Statistics Committee
PED	Public External Debt. PED is a sum of disbursed and outstanding external public loans or other debt instruments of the Kyrgyz Republic to non-resident creditors of the Kyrgyz Republic with definite maturity
PIP	Public Investment Program
REER	Real Effective Exchange Rate
SCI	State Customs Inspectorate under the Ministry of Finance of the Kyrgyz Republic
SDR	Special Drawing Rights
STB	State Treasury Bills
TA	Technical Assistance
TED	Total External Debt is a sum of disbursed and outstanding government and non-government loans of the Kyrgyz Republic borrowed under credit agreement or other debt instruments with definite maturity
WB	World Bank

## Contents

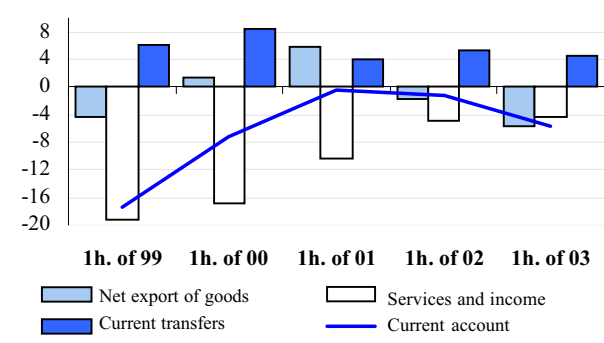
<b>1. Balance of payments: recent developments .....</b>	<b>6</b>
<b>Annex I. Tables and charts .....</b>	<b>13</b>
Table I.1: Balance of payments of the Kyrgyz Republic (standard presentation) .....	14
Table I.2: Structure of Export by the HS sections .....	22
Table I.3: Structure of Export by the ISCC sections .....	22
Table I.4: Structure of Import by the HS sections .....	23
Table I.5: Structure of Import by the ISCC sections .....	23
Table I.6: Functional structure of Export .....	24
Table I.7: Geographic structure of Export .....	24
Table I.8: Export of goods by individuals .....	24
Table I.9: Functional structure of Import .....	25
Table I.10: Geographic structure of Import .....	25
Table I.11: Import of goods by individuals .....	25
Table I.12: Export of major types of products .....	26
Table I.13: Import of major types of products .....	28
Table I.14: Impact of price and quantity on the volume of export .....	30
Table I.15: Impact of price and quantity on the volume of import .....	31
<b>Export of basic goods by countries .....</b>	<b>32</b>
Table I.16: Export of goods to Russia .....	32
Table I.17: Export of goods to Kazakhstan .....	33
Table I.18: Export of goods to Uzbekistan .....	34
Table I.19: Export of goods to Belarus .....	35
Table I.20: Export of goods to Switzerland .....	35
Table I.21: Export of goods to China .....	36
Table I.22: Export of goods to USA .....	36
Table I.23: Export of goods to Turkey .....	37
Table I.24: Export of goods to Germany .....	38
Table I.25: Export of goods to United Kingdom .....	38
<b>Import of basic goods by countries .....</b>	<b>39</b>
Table I.26: Import of goods from Russia .....	39
Table I.27: Import of goods from Kazakhstan .....	40
Table I.28: Import of goods from Uzbekistan .....	41
Table I.29: Import of goods from Belarus .....	42
Table I.30: Import of goods from China .....	43
Table I.31: Import of goods from the USA .....	44
Table I.32: Import of goods from Germany .....	45
Table I.33: Import of goods from Turkey .....	46
Chart I.1 Exchange rate and the real effective exchange rate index .....	47
Table I.34: Real and Nominal Effective Exchange Rate Indices .....	48
Table I.35: Geographic structure of foreign direct investments in Kyrgyz Republic .....	50
Table I.36: Sectorial structure of foreign direct investments in Kyrgyz Republic .....	50
Table I.37: International reserves (end of period) .....	51
Table I.38: External Debt of the Kyrgyz Republic .....	51
Table I.39: Structure of the external Debt of the Kyrgyz Republic by creditors .....	52
Table I.40: Balance of International Investment Position of the Kyrgyz Republic .....	53
Table I.41: Developments in Foreign Assets and Liabilities of the Kyrgyz Republic .....	54
<b>Annex II.</b>	
Table II.1: Sources of Information used by the National Bank for Compilation of the Balance of Payments of the Kyrgyz Republic .....	55

## Balance of Payments: Recent Developments

The balance of payments of the Kyrgyz Republic for the first half of 2003 indicates deterioration of the current account and an enhanced role of short-term capital as a means of financing current transactions.

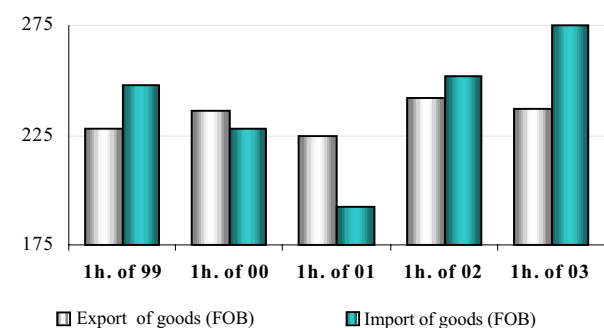
The negative **current account** balance for the first half of 2003 totaled US\$ 35.2 million whereas in the corresponding period of 2002 the negative balance was US\$ 7 million. Thus, the current account deficit as a share in GDP was 5.3 percent.

**Chart 1: Current Account balance**  
percent to GDP



The **trade deficit** totaled US\$ 38.1 million. Having made US\$ 511.5 million, the **foreign trade turnover** increased by 3.6 percent and was fully conditioned by increased intensity of trade with traditional trading partners from the CIS countries. At the same time, import of goods showed equally growth of both prices and physical deliveries, whereas a price factor balanced a negative impact of the quantitative factor for export of goods.

**Chart 2: Trade Balance of the KR**  
millions of US dollars



Export of goods in F.O.B. prices for January to June 2003 totaled US\$ 236.7 million, that is less by US\$ 5.2 million in comparison with the base period.

A forward dynamics in relations with traditional

trading partners was maintained and export to the CIS countries grew by 9.9 percent. However, the reduction in production of a number of export items caused a decline of export to the non-CIS countries by 7.2 percent.

**Table 1: Export of goods of the Kyrgyz Republic**  
(in millions of US dollars)

	1h. of 99	1h. of 00	1h. of 01	1h. of 02	1h. of 03
Export (f. o. b)	227.9	235.7	224.7	241.9	236.7
Growth rate (in percent)	-10.5	3.5	-4.7	7.6	-2.2

The total reduction of export of primary products for the accounting period, hides, tobacco and cotton, totaled US\$ 15.6 million and was the main reason for the decline of the total volume of export. The objective factors of the reduction in these items were those of an almost 3 times drop in production of tobacco in 2002, a temporary closure of the Kyrgyz border with China in spring of the current year (the basic buyer of hides, scrap metal and waste), as well as the fact that as against the previous years the most part of a crop of cotton of 2002 was exported in the same year.

Export of gold for the first half totaled almost US\$ 100 million, having thus increased by 9.7 percent in terms of value with respect to the base period. In fact, growth of the world prices for gold played a pivotal role in formation of the positive dynamics of the main export item of the republic, because physical export of gold was reduced by 12.5 percent with growth of the world prices for gold by one quarter.

The analysis of a functional structure of export shows that export of goods with the large share of the value added shows a positive tendency to growth. It is demonstrably true for the structure of export to the CIS countries where the share of the primary products fell from 40 to 28 percent, and the shares of the consumer goods increased from 31 to 37 percent. These changes could have been caused by the short-term and seasonal factors. Nevertheless, growth of export of such items as garments, glass, and other building materials testifies to strengthening of stability of export. Traditionally, the maximal share of export was that of the interim goods (51 percent) that include gold.

In terms of geographic distribution of export one third was the share of export to the CIS countries and 66 percent to the non-CIS countries. The largest volume of export deliveries was directed to Switzerland and the United Arab Emirates and was in the aggregate US\$ 101.1 million. Among the CIS countries Russia, Kazakhstan and Tajikistan were the basic partners, as before, and

their share was 30 percent (68.4 million US\$) in commodity export.

**Import of goods** in F.O.B. prices totaled US\$ 274.8 million in the first half of 2003 against US\$ 251.9 million in the similar period of the previous year.

**Table 2: Import of goods to the Kyrgyz Republic**  
(in millions of US dollars)

	1h. of 99	1h. of 00	1h. of 01	1h. of 02	1h. of 03
Import (f. o. b)	247.5	228.2	192.8	251.9	274.8
Growth rate (in percent)	-29.1	-7.8	-15.5	30.7	9.1

Growth of import prices and physical deliveries played the similar role in formation of the forward dynamics of import. The factorial analysis of a basket of basic import items, which were 64 percent in the period under review, showed that the prices and physical deliveries increased by 10 and 8 percent, correspondingly.

Low rates of inflation and appreciation of a national currency in nominal terms, accompanied with growth of real disposable income of the population, led to expansion of import of consumer goods. According to the results of the period under consideration, their import (in C.I.F. prices) grew by 21 percent and totaled US\$ 100.5 million that, in comparison with growth of the domestic retail commodity turnover by 10 percent allows assuming growth of imported goods in the domestic consumer market. The maximal growth was noted in food products and detergents.

As a whole, the commodity structure of import did not show any specific changes and alongside with the consumer products (34 percent of total import), energy resources (24 percent) and the capital goods (20 percent) remain as the main categories of import.

The volume of imported energy resources decreased insignificantly and totaled US\$ 71.2 million that was caused by only the reduction of import of natural gas from US\$ 22.5 million in the 1st half of 2002 to US\$ 15.3 million in the accounting period. The basic types of imported mineral oil, except for kerosene, showed growth of physical deliveries promoted by the reduction in the rate of an excise tax on gasoline and diesel oil by almost half in April of the current year.

The highest growth was noted in the non-capital items, whose share in total import increased to 16 percent. The increased volumes of the deliveries to the republic of paintwork material, other plastic goods, ferrous metal rolled stock, and tires substantially caused the increase in import of this type of goods.

In terms of geographic distribution of import of

goods, the largest volume of import was registered from Russia and Kazakhstan, whose share made 45.9 percent corresponding to US\$ 135.1 million. China, USA, Germany and Turkey were the basic suppliers of goods among the non-CIS countries. Their total share in import of goods for the accounting period totaled US\$ 79.4 million or was 27 percent of total import of goods from these countries.

Relatively dynamical growth was observed in a sector of international services for the recent 2 years. The turnover of services for the first half of 2003 was estimated at US\$ 133.0 million and it is equivalent to growth by 12 percent. The volumes of services rendered to non-residents increased by 11 percent for the accounting period, while import of services - by 12 percent. **The balance of international services** developed as negative and totaled US\$ 2.6 million against US\$ 1.9 million in the corresponding period of the last year.

**Table 3: balance of international services**  
(in millions of US dollars)

	1h. of 99	1h. of 00	1h. of 01	1h. of 02	1h. of 03
Balance of services	-43.7	-46.9	-27.4	-1.9	-2.6
Export of services	30.3	28.8	32.2	58.7	65.2
Change in, %	-88	-5	12	82	11
Import of services	74.0	75.7	59.6	60.6	67.8
Change in, %	-79	2	-21	2	12
Turnover of services	104.3	104.5	91.9	119.3	133.0
Change in, %	-83	0	-12	30	12

Export of services according to the results of the accounting period is estimated at US\$ 65.2 million, with growth against the base period by US\$ 6.5 million. As in the previous periods, the largest shares in terms of types of services were those of transport, tourism, business and governmental services, whose total share is equal to 80 percent of the total volume of services rendered to the non-residents. Among these types of services, growth was registered in the tourism and transport services and it was caused by development of the sphere of tourism and more active trade with the CIS countries. The volumes of business and governmental services remained practically at a level of the base period and their significant shares in export in the recent two years is connected mostly to operations of an international military base.

The services received from the non-residents totaled US\$ 67.8 million. The change in import of transportations services, the main item of import of services, indicated in general growth of flows of trade: import of transport services from the CIS countries increased by 12 percent while having

decreased 18 percent from the non-CIS countries. Except for transportation services, whose share was 33 percent of the total volume of services rendered by the non-residents, the largest share was that of technical assistance (15 percent), business (7 percent), insurance (9 percent) and financial services (8 percent). The largest growth was noted in the business and financial services, whose volume totaled US\$ 18.4 million.

The negative **balance of income** for January to June 2003 remained practically at the level of the similar period of 2002 and totaled US\$ 24.6 million. In addition, it is not marked special changes in structure of given item. In the same way as before, the structure of the balance of income showed the large share of interest payments to the non-residents on credits that totaled US\$ 14.5 million. Basically, (93 percent) these were the external public debt payments.

The negative balance of income from direct investment for the first half of the current year totaled US\$ 7.3 million, having thus decreased by 15 percent.

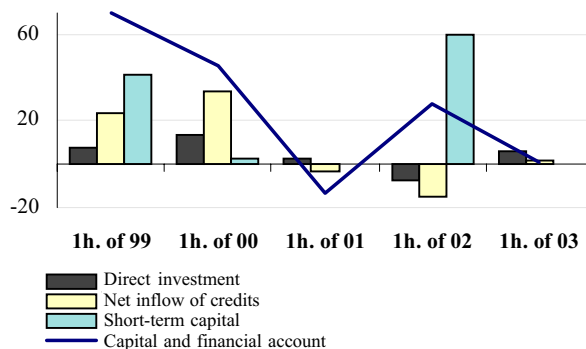
The balance of compensation of labor to the non-residents is estimated at US\$ 5.2 million that corresponds to the level of the base period.

The positive balance of **current transfers** for six months of 2003 totaled US\$ 30.1 million that is actually comparable to the given parameter in the similar period of the last year. Half of the attracted current transfers is that of the transfers received through official channels as commodity and technical assistance. The volume of technical assistance to Kyrgyzstan remained at the level of the first half of the last year and totaled US\$ 10.0 million. The size of the transfers as goods imported to the republic was estimated at US\$ 13.8 million, having thus decreased with respect to the base period by 6.8 percent that speaks for the reduction of deliveries of wheat flour from the USA. In the accounting period, grants in cash aimed at financing the state budget deficit made US\$ 1.5 million. A net inflow of transfers to the private sector as goods and transfers of individuals working abroad, classified under the current transfers, increased by 22 percent and totaled US\$ 14.3 million.

The balance **of the capital and financial account** (in the analytical format of the balance of payments) for the 1st half developed as positive of US\$ 0.3 million, whereas this parameter in the comparable period of 2002 was equivalent to US\$ 27.8 million.

**Chart 3: Capital and Financial Account**

(in millions of US dollars)



At the bottom of its reduction was the decrease in an outflow on the operations connected to migratory processes and the decline in the net inflow of the resources on the financial account.

The negative balance **of the capital account** for the accounting half of the year totaled US\$ 6.7 million and decreased against the similar parameter of 2002 by 26.5 percent. It was caused by, first of all, the reduction of the outflow of capital of migrants owing to delays in the processes of migration from the republic.

The balance **of the financial account** for six months decreased to US\$ 7 million against US\$ 37 million in the comparable period of 2002. Attention is drawn to the fact that the transactions with short-term capital had a dominating impact on formation of the balance of financial operations. For instance, the outflow of the short-term resources indicating the increase in assets placed by the residents abroad totaled US\$ 46.1 million as against their inflow estimated at US\$ 3.8 million in the corresponding period of 2002. At the same time, for the period under review short-term liabilities of the republic were noted to have sharply grown (from US\$ 9.3 million to US\$ 34.2 million) caused by, mainly, growth of the correspondent balance of banks and the balances on the accounts of enterprises abroad. Utilization of new credit resources decreased from US\$ 32.7 million in the base period to US\$ 21.5 million in the accounting period and was almost fully represented by the credits under the Public Investment Program. Debtor indebtedness of the enterprises for the half of the year under review decreased by US\$ 1.1 million, whereas the debts of the Kyrgyz enterprises to non-resident suppliers increased by US\$ 12.4 million for January to June 2003. As a result, the balance **of other investment** developed as negative of US\$ 2.9 million, while in the base period the balance was registered as positive of US\$ 41.7 million.



The balance of **direct investment** in the accounting period developed as positive of US\$ 5.9 million as against the outflow in the compared period. Direct investment injection to the economy of the republic was noted, basically, in industry and in the sphere of services. The operations of the large enterprises play the main role in the situation with direct investments.

The economic entities started to more actively conduct the transactions with the securities of the financial and corporate sectors. The inflow of the resources on **portfolio investment** increased more than three times for the period under review and totaled US\$ 12.4 million.

During the recent two years, profit from hedging of the gold price was reduced to US\$ 8.3 million.

Item "**Errors and omissions**" developed as positive in the first half of 2003 and totaled US\$ 26.4 million and indicates under-accounting of operations connected to export or inflows of capital. However,

as values of the given item in the 1st and 2nd quarters are specified by various signs there is, probably, a time discrepancy in the operations.

The capital and financial account almost balanced and the negative current account balance led to a gap of US\$ 10.3 million in **the balance of payments**. This gap was covered by the resources totaling US\$ 20.1 million indicated under the item "exceptional financing", which reflect a restructuring of bilateral credits within the framework of agreements with the Paris Club of creditors. Gold and foreign exchange reserves increased in the accounting period by US\$ 8.1 million and on the 1st of July 2003 made US\$ 329.1 million, covering 5.9 months of import of goods and services. The factors of the increase in the international reserves were those of purchases of foreign currency in the interbank foreign exchange market and growth of the price of gold in the world markets.

**Table 1. Balance of Payments of the Kyrgyz Republic**  
**(analytic presentation)**  
*(in millions of US dollars)*

	1999	2000	2001	2002	2002 1 half	2003 1 half
<b>Current Account</b>	<b>-184.0</b>	<b>-79.5</b>	<b>-18.9</b>	<b>-34.6</b>	<b>-7.0</b>	<b>-35.2</b>
Goods and services	-178.0	-82.9	-4.5	-61.1	-11.9	-40.7
Trade balance	-88.6	4.0	39.9	-54.0	-10.0	-38.1
Exports (f. o. b)	462.6	510.9	480.3	498.1	241.9	236.7
CIS	191.5	213.7	172.2	170.3	71.4	78.5
Non-CIS countries	271.0	297.2	308.0	327.7	170.5	158.2
Imports (f. o. b)	551.1	506.9	440.4	552.1	251.9	274.8
CIS	248.7	279.7	250.0	311.7	145.0	156.7
Non-CIS countries	302.4	227.2	190.3	240.3	106.9	118.1
Balance of services	-89.4	-86.9	-44.4	-7.1	-1.9	-2.6
Rendered services	64.9	61.8	80.3	138.4	58.7	65.2
Received services	-154.3	-148.8	-124.7	-145.5	-60.6	-67.8
Income	-74.0	-83.9	-65.5	-59.7	-26.0	-24.6
Direct investment income	-4.8	-39.1	-27.4	-17.3	-8.5	-7.3
Portfolio investment income	-0.4	0.0	-0.1	0.3	0.1	0.2
Other investment income	-57.3	-34.5	-27.7	-31.2	-12.3	-11.9
Interest in loans (schedule)	-67.3	-51.3	-39.4	-32.3	-15.0	-14.5
Other investment income	10.0	16.8	11.6	1.1	2.7	2.6
Compensation of employees	-11.5	-10.3	-10.3	-11.4	-5.2	-5.6
Current transfers	68.0	87.4	51.1	86.1	30.9	30.1
<b>Capital and financial account</b>	<b>205.4</b>	<b>53.0</b>	<b>-0.4</b>	<b>56.7</b>	<b>27.8</b>	<b>0.3</b>
Capital account	-15.2	-11.3	-32.0	-27.9	-9.1	-6.7
Capital transfers	-15.2	-11.3	-32.0	-27.9	-9.1	-6.7
Financial account	220.6	64.3	31.6	84.6	37.0	7.0
Direct investment in the KR	38.4	-6.9	-1.1	4.8	-7.4	5.9
Portfolio investment	-0.1	-1.3	1.2	-12.0	3.0	12.4
Financial derivatives	26.4	25.8	17.6	-5.1	-0.3	-8.3
Other investment	156.0	46.7	14.0	97.0	41.7	-2.9
Assets (- accretion)	-0.7	-27.3	-4.0	21.5	53.4	-38.0
Banks	-1.4	-1.6	-16.5	-42.3	-6.8	-29.9
Other assets	0.7	-25.8	12.5	63.8	60.1	-8.1
Liabilities (+ accretion)	156.7	74.0	17.9	75.5	-11.7	35.0
Banks	-2.8	-0.3	3.9	32.7	8.8	21.8
Loans	133.3	40.6	17.4	32.2	-15.3	2.1
General government	176.8	92.9	67.2	50.8	3.6	2.7
Disbursement	188.1	127.4	110.2	88.1	32.3	21.2
Amortization (schedule)	-11.2	-34.5	-43.1	-37.3	-28.8	-18.6
Private sector	-43.5	-52.3	-49.8	-18.6	-18.9	-0.5
Disbursement	8.6	3.9	4.3	1.9	0.4	0.3
Amortization (schedule)	-52.1	-56.2	-54.1	-20.5	-19.2	-0.9
Other liabilities	26.2	33.8	-3.4	10.6	-5.2	11.2
<b>Net errors and omissions</b>	<b>-3.4</b>	<b>10.3</b>	<b>18.6</b>	<b>6.8</b>	<b>-24.1</b>	<b>24.6</b>
<b>Overall balance</b>	<b>18.1</b>	<b>-16.2</b>	<b>-0.7</b>	<b>28.9</b>	<b>-3.2</b>	<b>-10.3</b>
<b>Financing</b>	<b>-18.1</b>	<b>16.2</b>	<b>0.7</b>	<b>-28.9</b>	<b>3.2</b>	<b>10.3</b>
NBKR reserves	-61.2	-21.2	-16.3	-43.8	4.1	-8.1
IMF loans	19.5	7.3	-2.1	-6.0	-10.4	-1.7
Exceptional financing	23.7	30.1	19.1	20.9	9.6	20.1
Other financing	0.0	—	—	—	—	—

2002				2003		
I	II	III	IV	I	II	
<b>-5.6</b>	<b>-1.4</b>	<b>-3.9</b>	<b>-23.7</b>	<b>11.8</b>	<b>-47.0</b>	<b>Current Account</b>
-11.9	0.0	-21.7	-27.5	2.5	-43.3	Goods and services
-10.6	0.6	-24.0	-20.0	3.1	-41.3	Trade balance
116.9	125.0	116.7	139.5	121.3	115.4	Exports (f. o. b)
34.5	37.0	45.9	53.1	39.8	38.7	CIS
82.5	88.0	70.8	86.4	81.5	76.7	Non-CIS countries
127.5	124.4	140.7	159.4	118.2	156.7	Imports (f. o. b)
76.0	69.0	75.1	91.7	64.6	92.1	CIS
51.5	55.4	65.6	67.8	53.6	64.5	Non-CIS countries
-1.3	-0.5	2.3	-7.5	-0.6	-2.0	Balance of services
27.8	30.9	43.9	35.8	31.3	33.9	Rendered services
-29.1	-31.5	-41.6	-43.3	-31.9	-35.9	Received services
-10.0	-16.0	-8.9	-24.8	-7.3	-17.3	Income
-3.9	-4.7	-2.3	-6.5	-2.2	-5.1	Direct investment income
0.1	—	0.1	0.1	0.2	0.1	Portfolio investment income
-3.4	-8.9	-4.0	-14.8	-2.4	-9.6	Other investment income
-4.2	-10.8	-4.4	-12.9	-3.3	-11.3	Interest in loans (schedule)
0.8	1.9	0.4	-2.0	0.9	1.7	Other investment income
-2.8	-2.5	-2.7	-3.5	-3.0	-2.7	Compensation of employees
16.3	14.7	26.6	28.6	16.6	13.6	Current transfers
<b>29.4</b>	<b>-1.6</b>	<b>0.8</b>	<b>28.1</b>	<b>8.3</b>	<b>-8.0</b>	<b>Capital and financial account</b>
-4.1	-5.0	-12.1	-6.7	-0.8	-6.0	Capital account
-4.1	-5.0	-12.1	-6.7	-0.8	-6.0	Capital transfers
33.5	3.4	12.8	34.8	9.0	-2.0	Financial account
4.7	-12.2	9.0	3.2	4.2	1.6	Direct investment in the KR
2.2	0.8	-9.5	-5.6	11.1	1.3	Portfolio investment
0.1	-0.4	-4.0	-0.8	-5.3	-3.0	Financial derivatives
26.5	15.1	17.3	38.1	-1.0	-1.9	Other investment
5.1	48.3	-29.0	-2.9	-27.4	-10.5	Assets (- accretion)
-3.8	-3.0	-19.4	-16.1	-4.9	-25.0	Banks
8.9	51.3	-9.6	13.2	-22.5	14.5	Other assets
21.4	-33.1	46.3	41.0	26.4	8.6	Liabilities (+ accretion)
-0.1	8.9	9.6	14.3	-0.4	22.1	Banks
12.7	-28.0	18.9	28.6	8.3	-6.1	Loans
13.2	-9.6	18.6	28.6	8.4	-5.7	General government
14.5	17.9	20.1	35.7	13.9	7.3	Disbursement
-1.3	-27.5	-1.5	-7.1	-5.5	-13.0	Amortization (schedule)
-0.5	-18.4	0.3	0.0	-0.1	-0.4	Private sector
0.2	0.1	1.5	0.1	0.3	—	Disbursement
-0.7	-18.5	-1.2	-0.1	-0.4	-0.4	Amortization (schedule)
8.8	-14.0	17.8	-1.9	18.5	-7.3	Other liabilities
<b>-24.0</b>	<b>0.0</b>	<b>20.8</b>	<b>10.0</b>	<b>-21.7</b>	<b>46.3</b>	<b>Net errors and omissions</b>
<b>-0.3</b>	<b>-3.0</b>	<b>17.7</b>	<b>14.5</b>	<b>-1.7</b>	<b>-8.6</b>	<b>Overall balance</b>
<b>0.3</b>	<b>3.0</b>	<b>-17.7</b>	<b>-14.5</b>	<b>1.7</b>	<b>8.6</b>	<b>Financing</b>
3.4	0.7	-31.3	-16.6	-10.5	2.4	NBKR reserves
-4.9	-5.6	10.3	-5.8	7.1	-8.7	IMF loans
1.7	7.9	3.4	7.9	5.1	15.0	Exceptional financing
—	—	—	—	—	—	Other financing



## **Annex I. Tables and charts**

---

**Table I.1: Balance of Payments of the Kyrgyz Republic**  
**(standard presentation)**  
*(in millions of US dollars)*

	1999	2000	2001	2002	2002	2003
					1 half	1 half
<b>Current Account</b>	<b>-184.0</b>	<b>-79.5</b>	<b>-18.9</b>	<b>-34.6</b>	<b>-7.0</b>	<b>-35.2</b>
Goods and services	-178.0	-82.9	-4.5	-61.1	-11.9	-40.7
Goods	-88.6	4.0	39.9	-54.0	-10.0	-38.1
Export of goods (f.o.b.)	462.6	510.9	480.3	498.1	241.9	236.7
exports	270.1	309.1	251.6	333.5	149.7	136.3
goods procured in ports	0.6	0.1	0.0	0.0	0.0	—
nonmonetary gold	183.1	195.3	224.6	162.8	91.1	99.9
adjustment to coverage	8.7	6.4	4.1	1.8	1.1	0.5
Import of goods (f.o.b.)	-551.1	-506.9	-440.4	-552.1	-251.9	-274.8
imports (c.i.f.)	-598.1	-553.1	-466.3	-583.9	-265.2	-292.9
valuation adjustment	62.2	51.7	31.2	37.6	16.4	21.0
goods procured in ports	-1.6	-1.6	-0.9	-2.9	-1.0	-1.3
adjustment to coverage	-13.5	-3.9	-4.3	-2.9	-2.1	-1.6
Services	-89.4	-86.9	-44.4	-7.1	-1.9	-2.6
exports	64.9	61.8	80.3	138.4	58.7	65.2
imports	-154.3	-148.8	-124.7	-145.5	-60.6	-67.8
Transportation services	-57.8	-53.3	-29.4	-16.5	-7.1	-4.0
exports	19.9	16.6	20.4	37.5	17.5	18.7
imports	-77.7	-69.9	-49.8	-54.0	-24.6	-22.6
Railroad transport	-32.5	-25.4	-18.3	-21.6	-9.9	-7.4
exports	2.8	4.5	6.5	9.4	4.1	5.5
imports	-35.3	-29.9	-24.8	-30.9	-14.0	-12.8
Air transport	1.1	-8.1	-4.4	10.0	4.9	5.7
exports	9.1	7.7	9.2	22.7	11.1	10.9
imports	-8.0	-15.8	-13.6	-12.8	-6.2	-5.2
Road transport	-12.6	-11.6	-5.5	-4.9	-2.3	-2.1
exports	2.5	1.2	2.3	2.9	1.1	0.9
imports	-15.1	-12.8	-7.8	-7.8	-3.4	-3.0
Other types of transport	-13.8	-8.2	-1.2	0.0	0.3	-0.2
exports	5.5	3.2	2.3	2.5	1.3	1.5
imports	-19.4	-11.4	-3.5	-2.5	-1.0	-1.7
Travels	3.4	-0.4	12.5	25.8	7.4	9.8
exports	14.1	15.3	24.4	35.7	12.5	14.3
imports	-10.7	-15.6	-11.9	-9.9	-5.0	-4.4
Business	1.5	-1.7	4.2	10.1	2.7	3.8
exports	6.6	6.6	10.5	15.3	5.4	6.1
imports	-5.1	-8.3	-6.3	-5.2	-2.7	-2.4
Personal	1.9	1.4	8.3	15.7	4.7	6.1
exports	7.5	8.7	13.9	20.3	7.1	8.1
imports	-5.6	-7.3	-5.6	-4.6	-2.4	-2.1
Communication services	2.2	2.3	0.8	1.9	0.7	0.5
exports	10.3	9.3	8.7	8.9	4.0	4.1
imports	-8.2	-7.0	-7.9	-7.0	-3.3	-3.6
Construction services	0.7	-2.8	-2.2	-3.6	-0.1	2.8
exports	3.9	3.1	4.5	4.9	2.6	2.8
imports	-3.2	-6.0	-6.7	-8.5	-2.7	0.0
Insurance services	-9.4	-7.5	-7.2	-8.6	-3.7	-5.3
exports	0.7	0.5	0.2	0.3	0.2	0.1
imports	-10.1	-8.0	-7.4	-8.9	-3.9	-5.4

2002		2003				
I	II	III	IV	I	II	
-5.6	-1.4	-3.9	-23.7	11.8	-47.0	<b>Current Account</b>
-11.9	0.0	-21.7	-27.5	2.5	-43.3	Goods and services
-10.6	0.6	-24.0	-20.0	3.1	-41.3	Goods
116.9	125.0	116.7	139.5	121.3	115.4	Export of goods (f.o.b.)
70.9	78.8	86.7	97.1	67.5	68.7	exports
0.0	0.0	—	—	—	—	goods procured in ports
45.3	45.8	29.6	42.0	53.6	46.4	nonmonetary gold
0.7	0.3	0.4	0.4	0.2	0.3	adjustment to coverage
-127.5	-124.4	-140.7	-159.4	-118.2	-156.7	Import of goods (f.o.b.)
-134.4	-130.8	-149.4	-169.2	-125.8	-167.1	imports (c.i.f.)
8.2	8.2	10.6	10.6	8.6	12.4	valuation adjustment
-0.2	-0.8	-1.3	-0.6	-0.4	-0.9	goods procured in ports
-1.1	-1.0	-0.6	-0.2	-0.5	-1.1	adjustment to coverage
-1.3	-0.5	2.3	-7.5	-0.6	-2.0	Services
27.8	30.9	43.9	35.8	31.3	33.9	exports
-29.1	-31.5	-41.6	-43.3	-31.9	-35.9	imports
-4.9	-2.2	-3.3	-6.1	-2.7	-1.2	Transportation services
8.0	9.6	11.4	8.5	8.0	10.7	exports
-12.8	-11.8	-14.7	-14.6	-10.8	-11.9	imports
-5.1	-4.8	-5.9	-5.8	-3.7	-3.7	Railroad transport
1.7	2.4	2.9	2.3	2.3	3.2	exports
-6.8	-7.3	-8.8	-8.1	-5.9	-6.9	imports
1.4	3.4	3.3	1.8	2.2	3.5	Air transport
5.2	5.9	6.9	4.8	4.6	6.2	exports
-3.7	-2.5	-3.5	-3.1	-2.4	-2.8	imports
-1.2	-1.1	-1.0	-1.6	-1.0	-1.1	Road transport
0.5	0.6	1.1	0.6	0.4	0.5	exports
-1.7	-1.7	-2.2	-2.3	-1.4	-1.6	imports
0.0	0.3	0.3	-0.5	-0.3	0.1	Other types of transport
0.7	0.6	0.5	0.7	0.8	0.7	exports
-0.7	-0.3	-0.3	-1.2	-1.1	-0.6	imports
2.9	4.5	10.4	8.0	3.6	6.3	Travels
5.8	6.7	13.5	9.7	5.4	8.9	exports
-2.8	-2.2	-3.1	-1.7	-1.9	-2.6	imports
1.0	1.7	4.2	3.3	1.3	2.4	Business
2.5	2.9	5.8	4.2	2.3	3.8	exports
-1.5	-1.2	-1.6	-0.9	-1.0	-1.4	imports
1.9	2.8	6.2	4.7	2.2	3.8	Personal
3.3	3.8	7.7	5.5	3.1	5.1	exports
-1.3	-1.0	-1.5	-0.8	-0.9	-1.2	imports
0.2	0.5	0.6	0.7	0.2	0.4	Communication services
1.9	2.1	2.3	2.5	2.0	2.1	exports
-1.7	-1.7	-1.8	-1.9	-1.9	-1.7	imports
0.9	-1.0	-1.9	-1.6	1.2	1.6	Construction services
1.3	1.3	1.2	1.1	1.3	1.6	exports
-0.4	-2.4	-3.1	-2.7	0.0	0.0	imports
-1.7	-2.0	-2.2	-2.6	-2.4	-2.9	Insurance services
0.0	0.2	0.0	0.0	0.1	0.1	exports
-1.7	-2.2	-2.3	-2.6	-2.5	-3.0	imports

**Table I.1: (continued)**

	1999	2000	2001	2002	2002	2003
					1 half	1 half
Financial services	-5.0	-3.2	-2.7	-9.0	-1.7	-3.6
exports	0.3	1.0	0.6	3.6	1.3	3.4
imports	-5.3	-4.2	-3.2	-12.5	-3.0	-7.0
Computer and information services	-0.5	-0.4	-0.5	-1.2	-0.8	-1.1
exports	0.2	0.5	0.5	0.7	0.1	0.5
imports	-0.7	-0.9	-1.0	-1.8	-0.9	-1.6
Government services	1.9	1.0	3.5	16.8	7.5	8.5
exports	4.6	4.9	6.9	20.3	8.9	9.4
imports	-2.7	-3.9	-3.4	-3.5	-1.4	-0.8
Business services	-25.7	-22.3	-20.3	-14.3	-4.7	-11.3
exports	7.2	8.1	10.8	24.7	10.9	10.7
imports	-32.9	-30.4	-31.1	-39.0	-15.5	-21.9
of which Technical assistance	-18.5	-20.4	-21.3	-21.0	-10.6	-10.1
Other services	0.9	-0.5	1.1	1.5	0.5	0.9
exports	3.6	2.5	3.3	2.0	0.7	1.2
imports	-2.8	-3.0	-2.2	-0.5	-0.1	-0.3
<b>Income</b>	<b>-74.0</b>	<b>-83.9</b>	<b>-65.5</b>	<b>-59.7</b>	<b>-26.0</b>	<b>-24.6</b>
Compensation of employees	-11.5	-10.3	-10.3	-11.4	-5.2	-5.6
Investment income	-62.5	-73.6	-55.2	-48.2	-20.7	-19.0
Direct investments	-4.8	-39.1	-27.4	-17.3	-8.5	-7.3
Distributed profit	-0.9	-1.3	-0.5	-0.1	-0.1	-0.1
Reinvested incomes	-3.9	-8.0	-13.5	-9.0	-4.1	-3.2
Income from debt (interests)	—	-29.8	-13.5	-8.2	-4.3	-3.9
Portfolio investments	-0.4	0.0	-0.1	0.3	0.1	0.2
Other investments	-57.3	-34.5	-27.7	-31.2	-12.3	-11.9
Interest on loans (schedule)	-67.7	-50.0	-39.0	-36.1	-14.9	-13.2
Monetary authorities	-2.2	-2.0	-1.6	-1.2	-0.6	-0.5
General government	-33.5	-29.7	-25.8	-26.9	-12.0	-13.0
Banks	-0.4	1.3	0.4	-3.9	0.1	1.4
Other sectors	-31.7	-19.6	-12.0	-4.3	-2.4	-1.0
Other investment income	10.5	15.5	11.2	5.0	2.5	1.2
Current transfers	68.0	87.4	51.1	86.1	30.9	30.1
General government	67.3	45.5	31.6	49.9	19.2	15.8
Humanitarian assistance	44.1	12.9	8.4	11.6	4.3	4.6
Technical assistance	18.0	20.0	20.0	20.0	10.0	10.0
Contributions to international organizations	-0.7	-1.3	-1.1	-0.7	-0.3	-0.3
Cash grants	5.9	13.9	4.3	19.0	5.2	1.5
Other sectors	0.7	41.9	19.6	36.2	11.7	14.3
Workers' remittances	0.7	1.4	1.7	5.9	1.3	5.5
Receipt	—	2.2	3.5	9.5	3.8	9.9
Outflow	—	-0.9	-1.7	-3.6	-2.5	-4.5
Other transfers	—	40.5	17.8	30.4	10.4	8.9
<b>Capital and Financial Account</b>	<b>187.3</b>	<b>69.2</b>	<b>0.4</b>	<b>27.8</b>	<b>31.1</b>	<b>10.6</b>
Capital account	-15.2	-11.3	-32.0	-27.9	-9.1	-6.7
Capital transfers	-15.2	-11.3	-32.0	-27.9	-9.1	-6.7
General government	6.7	3.0	1.8	7.7	5.9	4.9
Grant in form of goods	6.7	3.0	1.8	7.7	5.9	4.9
Other sectors	-21.9	-14.3	-33.8	-35.6	-15.0	-11.7
Transfers related to migration	-21.9	-27.5	-34.6	-36.6	-15.5	-11.9
Forgiveness of debt	—	6.1	—	—	—	—
Other transfers	—	7.1	0.8	1.0	0.5	0.3



2002				2003		
I	II	III	IV	I	II	
-0.7	-1.0	-4.4	-2.8	-0.6	-3.0	Financial services
0.1	1.2	1.6	0.7	3.1	0.4	exports
-0.8	-2.2	-6.0	-3.5	-3.7	-3.3	imports
-0.3	-0.5	0.1	-0.5	-0.5	-0.6	Computer and information services
0.0	0.1	0.5	0.0	0.3	0.2	exports
-0.3	-0.5	-0.4	-0.6	-0.8	-0.8	imports
4.3	3.2	5.4	3.9	3.8	4.8	Government services
4.8	4.1	6.2	5.2	4.6	4.8	exports
-0.4	-0.9	-0.8	-1.3	-0.8	—	imports
-2.3	-2.3	-2.8	-6.8	-3.5	-7.7	Business services
5.7	5.2	6.5	7.4	6.0	4.7	exports
-8.1	-7.5	-9.3	-14.2	-9.5	-12.4	imports
-5.4	-5.2	-5.1	-5.2	-5.1	-5.0	of which Technical assistance
0.2	0.4	0.6	0.3	0.4	0.5	Other services
0.2	0.4	0.7	0.6	0.5	0.7	exports
-0.1	-0.1	-0.1	-0.2	-0.1	-0.2	imports
-10.0	-16.0	-8.9	-24.8	-7.3	-17.3	Income
-2.8	-2.5	-2.7	-3.5	-3.0	-2.7	Compensation of employees
-7.2	-13.6	-6.2	-21.3	-4.3	-14.6	Investment income
-3.9	-4.7	-2.3	-6.5	-2.2	-5.1	Direct investments
-0.7	0.5	—	—	—	-0.1	Distributed profit
-2.6	-1.5	-1.7	-3.2	-1.4	-1.9	Reinvested incomes
-0.6	-3.7	-0.6	-3.4	-0.8	-3.1	Income from debt (interests)
0.1	—	0.1	0.1	0.2	0.1	Portfolio investments
-3.4	-8.9	-4.0	-14.8	-2.4	-9.6	Other investments
-4.1	-10.8	-4.4	-16.9	-3.0	-10.1	Interest on loans (schedule)
-0.1	-0.5	-0.1	-0.5	0.0	-0.5	Monetary authorities
-2.9	-9.1	-3.6	-11.3	-3.1	-9.9	General government
0.1	0.1	0.0	-4.0	0.2	1.1	Banks
-1.2	-1.2	-0.8	-1.1	-0.1	-0.9	Other sectors
0.7	1.9	0.4	2.1	0.7	0.6	Other investment income
16.3	14.7	26.6	28.6	16.6	13.6	Current transfers
12.5	6.7	13.5	17.2	8.3	7.5	General government
2.5	1.9	1.6	5.7	1.9	2.7	Humanitarian assistance
5.0	5.0	5.0	5.0	5.0	5.0	Technical assistance
-0.1	-0.2	-0.1	-0.3	-0.1	-0.2	Contributions to international organizations
5.2	—	7.0	6.8	1.5	—	Cash grants
3.8	8.0	13.1	11.4	8.2	6.1	Other sectors
1.2	0.1	2.6	2.0	1.9	3.6	Workers' remittances
1.5	2.3	3.1	2.6	2.5	7.5	Receipt
-0.3	-2.2	-0.6	-0.6	-0.6	-3.9	Outflow
2.5	7.9	10.5	9.4	6.3	2.5	Other transfers
<b>29.7</b>	<b>1.4</b>	<b>-16.9</b>	<b>13.7</b>	<b>9.9</b>	<b>0.7</b>	<b>Capital and Financial Account</b>
-4.1	-5.0	-12.1	-6.7	-0.8	-6.0	Capital account
-4.1	-5.0	-12.1	-6.7	-0.8	-6.0	Capital transfers
1.1	4.8	0.4	1.4	3.8	1.1	General government
1.1	4.8	0.4	1.4	3.8	1.1	Grant in form of goods
-5.2	-9.8	-12.5	-8.1	-4.5	-7.1	Other sectors
-5.5	-10.0	-12.6	-8.5	-4.6	-7.3	Transfers related to migration
—	—	—	—	—	—	Forgiveness of debt
0.3	0.2	0.2	0.4	0.1	0.2	Other transfers

**Table I.1: (continued)**

	1999	2000	2001	2002	2002	
					1 half	1 half
Financial account	202.5	80.5	32.4	55.8	40.2	17.3
Direct investment	38.4	-6.9	-1.1	4.8	-7.4	5.9
Abroad	-6.1	-4.5	-6.1	—	—	—
In the Kyrgyz Republic	44.4	-2.4	5.0	4.8	-7.4	5.9
Receipt	—	—	—	115.6	45.8	43.4
Outflow	—	—	—	-110.9	-53.3	-37.6
In the share capital	11.2	17.6	12.3	5.0	-4.6	1.7
Receipt	—	—	—	26.1	6.0	4.8
Outflow	—	—	—	-21.2	-10.6	-3.1
Reinvestment income	3.9	8.0	13.5	9.0	4.1	3.2
Other capital	29.4	-28.0	-20.8	-9.2	-7.0	0.9
Receipt	—	—	—	80.5	35.7	35.4
Outflow	—	—	—	-89.7	-42.7	-34.5
Portfolio investment	-0.1	-1.3	1.2	-12.0	3.0	12.4
Assets	0.0	-1.6	1.2	-2.5	3.0	7.5
Debt securities	0.0	-1.6	1.2	-2.5	3.0	7.5
Liabilities	-0.1	0.3	0.0	-9.5	—	4.9
Assets	0.2	0.3	0.0	-9.5	—	4.9
Debt securities	-0.3	0.0	—	—	—	—
Financial derivatives	26.4	25.8	17.6	-5.1	-0.3	-8.3
Assets	26.4	25.8	17.6	-5.1	-0.3	-8.3
Other sectors	26.4	25.8	17.6	-5.1	-0.3	-8.3
Other investments	199.1	84.1	31.0	111.9	40.8	15.5
Assets	-0.7	-27.3	-4.0	21.5	53.4	-38.0
Currency and deposits	7.7	-3.0	-1.3	-27.3	0.9	-37.7
Banks	-1.4	-1.6	-16.5	-42.3	-6.8	-29.9
Other sectors	9.1	-1.5	15.1	15.0	7.7	-7.8
Trade credits	-9.2	-32.8	-2.8	24.6	25.7	-1.1
General government	-6.6	-31.8	-6.6	14.8	15.4	-0.7
Long - term	-4.4	-21.3	-4.4	9.9	10.3	-0.4
Short - term	-2.2	-10.5	-2.2	4.9	5.1	-0.2
Other sectors	-2.5	-1.0	3.8	9.8	10.3	-0.4
Long - term	-1.6	-0.6	2.8	6.6	6.9	-0.3
Short - term	-1.0	-0.5	0.9	3.2	3.4	-0.1
Other assets	0.7	8.5	0.2	24.2	26.8	0.9
Monetary authorities	0.0	8.6	—	23.9	26.6	0.7
General government	0.7	-0.1	0.2	0.3	0.1	0.1
Liabilities	199.8	111.4	34.9	90.5	-12.6	53.5
Currency and deposits	0.4	-1.0	1.0	26.0	8.4	26.7
Banks	0.4	-1.0	1.0	26.0	8.4	26.7
Trade credits	26.2	26.0	0.7	12.7	-4.0	12.4
General government	47.6	3.9	19.3	7.6	-2.4	7.4
Long - term	31.8	2.7	13.3	5.3	-1.7	5.1
Short - term	15.8	1.2	6.0	2.4	-0.8	2.3
Other sectors	-21.5	22.2	-18.6	5.1	-1.6	5.0
Long - term	-17.2	14.4	-11.9	3.5	-1.1	3.4
Short - term	-4.3	7.7	-6.7	1.6	-0.5	1.5
Loans	149.6	48.5	18.2	32.9	-25.3	-4.5
Disbursement	225.2	152.9	148.5	299.3	155.8	53.6
Monetary authorities	26.8	18.7	14.9	15.4	—	16.1
Long - term	26.8	18.7	14.9	15.4	—	16.1
General government	188.1	127.4	110.2	88.1	32.3	21.2
Long - term	188.1	127.4	110.2	88.1	32.3	21.2
Short - term	—	—	—	—	—	—

2002				2003		
I	II	III	IV	I	II	
33.8	6.4	-4.8	20.4	10.7	6.6	Financial account
4.7	-12.2	9.0	3.2	4.2	1.6	Direct investment
—	—	—	—	—	—	Abroad
4.7	-12.2	9.0	3.2	4.2	1.6	In the Kyrgyz Republic
19.2	26.6	19.6	50.1	21.1	22.3	Receipt
-14.5	-38.8	-10.6	-47.0	-16.8	-20.7	Outflow
-4.4	-0.3	7.4	2.2	-1.2	2.9	In the share capital
3.7	2.3	9.2	11.0	0.3	4.5	Receipt
-8.0	-2.6	-1.8	-8.8	-1.5	-1.7	Outflow
2.6	1.5	1.7	3.2	1.4	1.9	Reinvestment income
6.5	-13.4	0.0	-2.2	4.0	-3.1	Other capital
13.0	22.8	8.8	36.0	19.4	15.9	Receipt
-6.5	-36.2	-8.8	-38.2	-15.4	-19.1	Outflow
2.2	0.8	-9.5	-5.6	11.1	1.3	Portfolio investment
2.2	0.8	0.0	-5.6	6.2	1.3	Assets
2.2	0.8	0.0	-5.6	6.2	1.3	Debt securities
—	—	-9.5	—	4.9	—	Liabilities
—	—	-9.5	—	4.9	—	Assets
—	—	—	—	—	—	Debt securities
0.1	-0.4	-4.0	-0.8	-5.3	-3.0	Financial derivatives
0.1	-0.4	-4.0	-0.8	-5.3	-3.0	Assets
0.1	-0.4	-4.0	-0.8	-5.3	-3.0	Other sectors
23.4	17.4	30.9	40.2	11.1	4.4	Other investments
5.1	48.3	-29.0	-2.9	-27.4	-10.5	Assets
-23.1	24.0	-12.4	-15.8	-16.9	-20.9	Currency and deposits
-3.8	-3.0	-19.4	-16.1	-4.9	-25.0	Banks
-19.3	26.9	7.0	0.3	-12.0	4.1	Other sectors
26.8	-1.1	-16.2	15.0	-10.9	9.8	Trade credits
16.1	-0.7	-9.7	9.0	-6.5	5.9	General government
10.8	-0.4	-6.5	6.0	-4.4	3.9	Long - term
5.3	-0.2	-3.2	3.0	-2.2	1.9	Short - term
10.7	-0.4	-6.5	6.0	-4.4	3.9	Other sectors
7.2	-0.3	-4.3	4.0	-2.9	2.6	Long - term
3.5	-0.1	-2.1	2.0	-1.4	1.3	Short - term
1.3	25.4	-0.5	-2.1	0.3	0.5	Other assets
1.3	25.4	-0.5	-2.2	0.3	0.5	Monetary authorities
0.1	0.1	0.1	0.1	0.1	0.1	General government
18.3	-30.8	59.9	43.1	38.6	14.9	Liabilities
1.6	6.8	7.2	10.4	6.0	20.7	Currency and deposits
1.6	6.8	7.2	10.4	6.0	20.7	Banks
9.4	-13.4	18.4	-1.6	19.5	-7.1	Trade credits
5.6	-8.0	11.0	-1.0	11.7	-4.3	General government
3.9	-5.6	7.6	-0.7	8.1	-2.9	Long - term
1.7	-2.5	3.4	-0.3	3.6	-1.3	Short - term
3.7	-5.4	7.3	-0.6	7.8	-2.8	Other sectors
2.6	-3.7	5.1	-0.4	5.4	-2.0	Long - term
1.2	-1.7	2.3	-0.2	2.4	-0.9	Short - term
6.2	-31.5	31.5	26.7	9.0	-13.5	Loans
51.2	104.6	84.0	59.5	36.2	17.3	Disbursement
—	—	15.4	—	16.1	—	Monetary authorities
—	—	15.4	—	16.1	—	Long - term
14.5	17.9	20.1	35.7	13.9	7.3	General government
14.5	17.9	20.1	35.7	13.9	7.3	Long - term
—	—	—	—	—	—	Short - term

**Table I.1: (continued)**

	1999	2000	2001	2002	2002	2003
					1 half	1 half
Banks	1.7	2.9	19.1	193.9	123.1	15.9
Long - term	—	—	—	—	—	—
Short - term	1.7	2.9	19.1	193.9	123.1	15.9
Other sectors	8.6	3.9	4.3	1.9	0.4	0.3
Long - term	8.6	3.9	4.3	1.9	0.4	0.3
Short - term	—	—	—	—	—	—
Amortization (schedule)	-75.6	-104.4	-130.3	-266.4	-181.1	-58.0
Monetary authorities	-7.3	-11.4	-17.0	-21.4	-10.4	-17.8
Long - term	-7.3	-11.4	-17.0	-21.4	-10.4	-17.8
General government	-11.2	-34.5	-43.1	-37.3	-28.8	-18.6
Long - term	-11.2	-34.5	-43.1	-37.3	-28.8	-18.6
Short - term	—	—	—	—	—	—
Banks	-5.0	-2.3	-16.2	-187.2	-122.7	-20.9
Long - term	—	—	—	—	—	—
Short - term	-5.0	-2.3	-16.2	-187.2	-122.7	-20.9
Other sectors	-52.1	-56.2	-54.1	-20.5	-19.2	-0.9
Long - term	-52.1	-56.2	-54.1	-20.5	-19.2	-0.9
Short - term	—	—	—	—	—	—
Arrears	23.7	30.1	19.1	20.9	9.6	20.1
General government	22.4	28.8	15.6	17.3	8.0	18.5
Other sectors	1.3	1.3	3.5	3.6	—	1.6
Other liabilities	0.0	7.8	-4.0	-2.1	-1.2	-1.2
Monetary authorities	0.0	—	—	—	—	—
Other sectors	—	7.8	-4.0	-2.1	-1.2	-1.2
Reserve assets	-61.2	-21.2	-16.3	-43.8	4.1	-8.1
Monetary gold	—	—	—	—	—	—
SDR	-4.8	4.3	0.6	—	—	2.6
Foreign exchange	-56.4	-25.5	-16.9	-43.8	4.1	-10.8
<b>Net errors and omissions</b>	<b>-3.4</b>	<b>10.3</b>	<b>18.6</b>	<b>6.8</b>	<b>-24.1</b>	<b>24.6</b>
<b>Overall Balance</b>	<b>0.0</b>	<b>0.0</b>	<b>0.0</b>	<b>0.0</b>	<b>0.0</b>	<b>0.0</b>

Note:

Long-term investments are investments in financial assets, whose initial maturity was set up, in compliance with a contract, as more than one year, or has never been stipulated.

Short-term investments are investments in financial assets with maturity of one year or less than one year, pursuant to a contract, or paid as short notice.

2002				2003		
I	II	III	IV	I	II	
36.4	86.7	47.0	23.8	5.9	10.0	Banks
—	—	—	—	—	—	Long - term
36.4	86.7	47.0	23.8	5.9	10.0	Short - term
0.2	0.1	1.5	0.1	0.3	—	Other sectors
0.2	0.1	1.5	0.1	0.3	—	Long - term
—	—	—	—	—	—	Short - term
-44.9	-136.2	-52.5	-32.8	-27.3	-30.8	Amortization (schedule)
-4.9	-5.6	-5.2	-5.8	-9.0	-8.7	Monetary authorities
-4.9	-5.6	-5.2	-5.8	-9.0	-8.7	Long - term
-1.3	-27.5	-1.5	-7.1	-5.5	-13.0	General government
-1.3	-27.5	-1.5	-7.1	-5.5	-13.0	Long - term
—	—	—	—	—	—	Short - term
-38.1	-84.6	-44.6	-19.9	-12.2	-8.6	Banks
—	—	—	—	—	—	Long - term
-38.1	-84.6	-44.6	-19.9	-12.2	-8.6	Short - term
-0.7	-18.5	-1.2	-0.1	-0.4	-0.4	Other sectors
-0.7	-18.5	-1.2	-0.1	-0.4	-0.4	Long - term
—	—	—	—	—	—	Short - term
1.7	7.9	3.4	7.9	5.1	15.0	Arrears
0.7	7.3	2.6	6.7	4.4	14.0	General government
1.0	0.6	0.8	1.2	0.7	1.0	Other sectors
-0.6	-0.6	-0.5	-0.3	-1.0	-0.2	Other liabilities
—	—	—	—	—	—	Monetary authorities
-0.6	-0.6	-0.5	-0.3	-1.0	-0.2	Other sectors
3.4	0.7	-31.3	-16.6	-10.5	2.4	Reserve assets
—	—	—	—	—	—	Monetary gold
—	—	—	—	1.6	1.0	SDR
3.4	0.7	-31.3	-16.6	-12.2	1.4	Foreign exchange
<b>-24.0</b>	<b>0.0</b>	<b>20.8</b>	<b>10.0</b>	<b>-21.7</b>	<b>46.3</b>	<b>Net errors and omissions</b>
<b>0.0</b>	<b>0.0</b>	<b>0.0</b>	<b>0.0</b>	<b>0.0</b>	<b>0.0</b>	<b>Overall Balance</b>

**Table I.2: Structure of Export by the HS sections<sup>1</sup>**  
(in millions of US dollars)

Group of Products	1999	2000	2001	2002	1 half '02	1 half '03
<b>Total</b>	<b>453.8</b>	<b>504.5</b>	<b>476.2</b>	<b>485.5</b>	<b>234.1</b>	<b>233.7</b>
Live animals and animal products	1.5	1.8	3.2	3.8	1.7	3.0
Vegetable products	18.0	14.4	13.3	19.9	7.1	8.1
Fats and animal or vegetable oil	0.5	0.5	0.0	0.2	0.1	0.1
Food prod., strong & soft drinks and vinegar,tobacco	53.4	37.3	32.7	30.1	19.3	14.0
Mineral products <sup>2</sup>	57.2	86.8	58.4	62.4	22.6	26.5
Products of chemistry and related industries	14.6	14.5	18.0	25.2	11.8	4.0
Plastics and plastic goods, rubber and rubber goods	4.0	6.1	4.0	5.1	2.7	7.0
Hides, leather, natural fur, harness and saddle products	2.8	7.6	10.3	24.2	12.1	2.3
Timber and timber products, charcoal, cork	0.4	0.6	0.3	0.4	0.2	0.1
Paper stuff from wooden pulp or other materials	0.7	0.4	1.2	0.6	0.1	0.6
Textile and textile products	32.0	42.8	29.5	59.8	25.6	26.6
Foot-wear, headgear, umbrellas, canes and whips	0.2	0.2	0.5	0.2	0.0	0.1
Products of stone, gyps, cement, asbestos, mica	5.3	4.2	5.2	8.9	2.5	8.4
Precious metals, pearls, precious stones	183.6	196.9	226.7	164.8	91.8	101.3
Non-precious metals and products from them	27.0	34.8	15.3	23.4	10.2	10.6
Machines, equipment and mechanisms	27.5	33.4	28.5	26.9	11.6	12.8
Terrestrial, air, marine transport and their parts	16.3	14.9	26.5	21.2	9.6	7.0
Optic devices and appliances, photography & cinematograph	1.5	3.3	1.3	1.8	0.6	0.3
Other special industrial products	6.4	3.3	0.3	5.4	3.9	0.2
Various industrial goods	0.6	0.6	0.9	1.0	0.5	0.6
Pieces of art, collection and antique goods	0.4	0.1	0.0	0.2	0.0	—

<sup>1</sup> source: NSC, in f.o.b. prices

<sup>2</sup> including energy products

**Table I.3: Structure of Export by the ISCC sections<sup>1</sup>**  
(in millions of US dollars)

Group of Products	1999	2000	2001	2002	1 half '02	1 half '03
<b>Total</b>	<b>453.8</b>	<b>504.5</b>	<b>476.2</b>	<b>485.5</b>	<b>234.1</b>	<b>233.7</b>
Food products and live animals	24.0	17.6	19.3	31.2	12.2	14.3
Drinks and tobacco	45.3	33.8	28.2	21.0	14.8	9.7
Non-food raw products, excluding fuel	51.6	76.1	46.2	82.5	40.1	28.5
Mineral fuel, lubricants, and oils	53.6	82.5	54.5	58.2	19.7	24.2
Animal and vegetable oils, fats and wax	0.5	0.4	0.0	0.2	0.1	0.1
Chemical and similar products, not included in other categories	15.1	14.8	18.2	25.5	12.1	4.0
Industrial goods, classified by types of material	20.7	18.8	19.5	36.1	12.5	22.4
Machines and transportation equipment	44.5	49.1	55.6	48.8	21.7	20.1
Various finished products	15.4	16.1	10.2	19.3	9.9	10.6
Goods and transactions, not included in other ISCC categories	183.1	195.3	224.6	162.8	91.1	99.9

<sup>1</sup> source: NSC, in f.o.b. prices

**Table I.4: Structure of Import by the HS sections<sup>1</sup>**  
(in millions of US dollars)

Group of Products	1999	2000	2001	2002	1 half '02	1 half '03
<b>Total</b>	<b>599.7</b>	<b>554.6</b>	<b>467.2</b>	<b>586.8</b>	<b>266.2</b>	<b>294.2</b>
Live animals and animal products	3.7	4.3	3.3	3.3	1.3	2.6
Vegetable products	37.5	42.3	15.5	21.7	13.8	7.9
Fats and animal or vegetable oil	6.7	3.7	3.9	5.0	2.5	6.5
Food prod., strong & soft drinks & vinegar and tobacco	34.5	31.0	35.8	47.4	19.3	25.2
Mineral products <sup>2</sup>	128.7	133.8	129.5	163.4	76.3	77.7
Products of chemistry and related industries	60.9	59.3	67.3	78.4	30.6	31.6
Plastics and plastic goods, rubber and rubber goods	16.6	22.8	22.0	24.9	11.9	15.3
Hides, leather, natural fur, harness and saddle products	0.6	2.3	4.1	2.6	1.8	0.2
Timber and timber products, charcoal, cork	4.5	7.0	5.2	6.6	2.5	4.6
Paper stuff from wooden pulp or other materials	12.3	15.8	12.8	13.4	5.7	7.6
Textile and textile products	34.2	35.2	28.8	38.9	17.5	17.8
Foot-wear, headgear, umbrellas, fold. umbr-s and canes	5.7	5.2	5.1	5.9	3.0	2.4
Products of stone, gyps, cement, asbestos, mica	5.5	4.9	5.1	6.2	2.7	3.8
Precious metals, pearls, precious stones	0.2	0.2	0.1	0.1	—	—
Non-precious metals and products from them	32.0	27.6	27.3	29.7	13.2	17.2
Machines, equipment and mechanisms	148.9	98.2	56.5	89.6	42.4	40.3
Terrestrial, air, marine transport and their parts	29.9	41.8	31.8	32.1	16.7	21.4
Optic.devices and appliances, photography&cinematograph	27.2	10.8	8.0	10.6	2.2	8.1
Other special industrial products	—	0.1	0.1	0.1	0.0	0.1
Various industrial goods	10.1	8.3	5.0	6.8	2.5	3.8
Pieces of art, collection and antique goods	—	—	—	0.2	—	—

<sup>1</sup> source: NSC, in c.i.f. prices

<sup>2</sup> including energy products

**Table I.5: Structure of Import by the ISCC sections<sup>1</sup>**  
(in millions of US dollars)

Group of Products	1999	2000	2001	2002	1 half '02	1 half '03
<b>Total</b>	<b>599.7</b>	<b>554.6</b>	<b>467.2</b>	<b>586.8</b>	<b>266.2</b>	<b>294.2</b>
Food products and live animals	52.7	60.5	35.8	53.2	26.0	24.2
Drinks and tobacco	12.8	17.3	18.7	19.2	8.6	11.7
Non-food raw products, excluding fuel	20.3	14.1	16.8	23.8	9.5	12.3
Mineral fuel, lubricants, and oils	121.7	129.1	121.0	152.0	72.1	71.2
Animal and vegetable oils, fats and wax	5.8	3.0	3.1	3.8	2.0	5.8
Chemical and similar products, not inc.in other categories	66.1	66.6	75.5	87.0	35.1	36.7
Industrial goods, classified by types of material	75.3	77.6	70.7	76.4	34.7	44.4
Machines and transportation equipment	183.1	141.8	89.3	122.6	59.2	63.6
Various finished products	61.8	44.5	36.3	48.7	19.0	24.2
Goods and transactions, not included in other ISCC categories	0.1	—	—	0.0	0.0	—

<sup>1</sup> source: NSC, in c.i.f. prices

**Table I.6: Functional Structure of Export<sup>1</sup>**  
(in millions of US dollars)

	1999	2000	2001	2002	1 half '02	1 half '03
<b>Total</b>	<b>453.8</b>	<b>504.5</b>	<b>476.2</b>	<b>485.5</b>	<b>234.1</b>	<b>233.7</b>
Consumption	64.1	57.5	57.3	76.5	35.2	40.9
Raw materials	110.3	121.1	88.6	132.1	65.4	38.3
Interim goods	200.0	212.8	244.2	187.4	101.2	118.4
Investment goods	25.7	30.5	31.5	31.3	12.6	11.8
Energy products	53.6	82.5	54.5	58.2	19.7	24.2

<sup>1</sup> according to the classification worked out by the NBKR and based on the NSC data on export at f. o. b. prices

**Table I.7: Geographic Structure of Export<sup>1</sup>**  
(in millions of US dollars)

	1999	2000	2001	2002	1 half '02	1 half '03
<b>Total</b>	<b>453.8</b>	<b>504.5</b>	<b>476.2</b>	<b>485.5</b>	<b>234.1</b>	<b>233.7</b>
<b>CIS countries</b>	<b>183.3</b>	<b>207.4</b>	<b>168.5</b>	<b>168.8</b>	<b>70.5</b>	<b>78.0</b>
Russia	70.7	65.1	64.5	80.0	38.1	40.2
Kazakhstan	45.0	33.4	39.0	36.8	15.0	19.9
Uzbekistan	46.6	89.4	48.0	27.8	9.2	4.8
Tadjikistan	9.5	7.5	6.7	10.2	3.2	8.3
Belarus	4.9	3.0	3.2	1.3	0.7	1.0
Ukraine	1.5	1.1	2.9	4.3	2.6	2.1
Other CIS countries	5.2	7.9	4.2	8.3	1.7	1.7
<b>Non-CIS countries</b>	<b>270.5</b>	<b>297.1</b>	<b>307.6</b>	<b>316.8</b>	<b>163.5</b>	<b>155.6</b>
Switzerland	18.1	34.1	124.2	96.4	79.8	49.9
UAE	1.1	1.4	0.5	68.8	12.4	51.3
China	25.3	44.1	19.4	41.1	19.6	12.6
USA	11.2	2.8	7.1	36.1	19.1	5.3
Turkey	4.6	7.2	13.8	16.4	8.0	3.8
Canada	0.3	0.1	1.2	4.9	0.2	12.4
Germany	148.2	144.6	94.4	1.8	0.9	1.0
Great Britain	12.4	18.8	14.1	0.9	0.8	0.0
Other non-CIS countries	49.3	44.0	32.9	50.6	22.6	19.4

<sup>1</sup> source: NSC, in f.o.b. prices

**Table I.8: Export of goods by individuals<sup>1</sup>**  
(in millions of US dollars)

	1999	2000	2001	2002	1 half '02	1 half '03
<b>Total</b>	<b>21.9</b>	<b>20.3</b>	<b>28.1</b>	<b>23.4</b>	<b>11.5</b>	<b>8.5</b>
included in the official statistical data	13.2	13.9	24.0	21.6	10.4	8.3
CIS	13.2	8.0	11.1	11.4	4.1	6.5
Non-CIS countries	0.0	5.9	12.9	10.2	6.3	1.8
evaluative	8.7	6.4	4.1	1.8	1.1	0.3
CIS	8.2	6.3	3.7	1.6	0.9	0.3
Non-CIS countries	0.5	0.1	0.4	0.2	0.2	0.0

<sup>1</sup> source: NSC, in f. o. b. prices



**Table I.9: Functional Structure of Import<sup>1</sup>**  
(in millions of US dollars)

	1999	2000	2001	2002	1 half '02	1 half '03
<b>Total</b>	<b>599.7</b>	<b>554.6</b>	<b>467.2</b>	<b>586.8</b>	<b>266.2</b>	<b>294.2</b>
Consumption	181.3	205.9	167.7	193.8	82.9	100.5
Raw materials	29.1	18.7	31.8	40.2	21.0	15.0
Interim goods	107.5	93.7	89.0	85.1	37.5	47.6
Investment goods	160.2	107.2	57.7	115.6	52.7	59.8
Energy products	121.8	129.2	121.0	152.0	72.1	71.2

<sup>1</sup> in according with classification worked out at the NBKR on the basis of NSC import data in c. i. f prices

**Table I.10: Geographic Structure of Import<sup>1</sup>**  
(in millions of US dollars)

	1999	2000	2001	2002	1 half '02	1 half '03
<b>Total</b>	<b>599.7</b>	<b>554.6</b>	<b>467.2</b>	<b>586.8</b>	<b>266.2</b>	<b>294.2</b>
<b>CIS countries</b>	<b>259.3</b>	<b>299.0</b>	<b>257.0</b>	<b>322.6</b>	<b>149.1</b>	<b>163.3</b>
Russia	109.4	132.6	85.1	116.7	50.7	69.0
Kazakhstan	72.7	57.4	81.8	123.9	56.5	66.1
Uzbekistan	50.0	75.1	66.7	60.1	30.7	19.1
Ukraine	6.3	7.0	6.2	7.8	3.6	4.9
Belarus	5.3	3.9	6.0	5.1	3.4	2.0
Turkmenistan	7.8	18.7	9.0	1.7	0.6	0.1
Other CIS countries	15.6	23.0	11.2	8.9	4.2	2.2
<b>Non-CIS countries</b>	<b>340.5</b>	<b>255.6</b>	<b>210.3</b>	<b>264.2</b>	<b>117.2</b>	<b>130.9</b>
China	36.9	36.9	48.5	59.0	30.0	27.4
USA	54.2	53.8	26.8	47.4	16.8	21.6
Germany	47.3	25.2	24.3	31.4	12.2	16.9
Turkey	23.1	26.8	15.8	17.0	8.1	13.5
Canada	25.4	11.3	10.9	9.0	4.2	2.5
Great Britain	7.0	5.6	4.8	2.8	1.0	1.5
Brazil	1.2	0.3	1.8	0.2	0.2	0.1
Cuba	4.1	0.0	0.1	0.0	—	—
Other non-CIS countries	141.2	95.8	77.4	97.3	44.5	47.4

<sup>1</sup> source: NSC, in c.i.f. prices

**Table I.11: Import of goods by individuals<sup>1</sup>**  
(in millions of US dollars)

	1999	2000	2001	2002	1 half '02	1 half '03
<b>Total</b>	<b>58.3</b>	<b>56.7</b>	<b>50.9</b>	<b>59.5</b>	<b>26.5</b>	<b>28.2</b>
included in official statistics	44.8	52.7	46.6	56.6	24.4	26.6
CIS	11.6	19.3	7.0	5.6	2.0	2.8
Non-CIS countries	33.2	33.4	39.6	51.0	22.4	23.7
evaluative	13.5	3.9	4.3	2.9	2.1	1.6
CIS	9.7	3.5	3.6	2.3	1.8	1.0
Non-CIS countries	3.9	0.4	0.7	0.6	0.3	0.6

<sup>1</sup> source: NSC, in c. i. f. prices

**Table I.12: Export of Major Types of Products<sup>1</sup>**

<i>Products</i>	<i>unit of measurement.</i>	2001		2002	
		<i>in kind</i>	<i>mil. US\$</i>	<i>in kind</i>	<i>mil. US\$</i>
<b>Total</b>			<b>476.2</b>		<b>485.5</b>
Milk products and bird's eggs			3.7		5.7
Cereals and cereals products	<i>thou tons</i>	8.5	1.3	4.8	0.8
Vegetables and Fruits	<i>thou tons</i>	91.5	10.9	104.9	16.2
Sugar, sugar-ware and honey	<i>thou tons</i>	9.2	2.6	17.3	5.8
Coffee,tea,cocoa and spices	<i>thou tons</i>	0.4	0.5	1.2	2.2
Beverage foods			0.6		0.4
Tobacco and tobacco products			27.6		20.7
Raw tobacco and tobacco waste	<i>thou tons</i>	29.8	25.6	23.9	19.8
Cattle hides, hide and peltry			8.4		19.3
Oil seeds and oil fruits	<i>thou tons</i>	1.4	0.2	0.1	0.0
Textile fibers	<i>thou tons</i>	29.4	24.5	64.9	48.1
Cotton	<i>thou tons</i>	28.1	22.4	62.6	45.3
Wool	<i>thou tons</i>	1.1	1.5	2.2	2.4
Raw fertilizers			1.7		2.3
Stone, sand and gravel	<i>thou tons</i>	720.9	1.0	325.6	1.1
Metal ores and scrap	<i>thou tons</i>	127.9	9.8	215.0	11.0
Primary goods			1.2		1.4
Oil and Oil products	<i>thou tons</i>	27.8	7.4	97.7	35.4
Electric energy	<i>mil.kwh</i>	2 164.7	46.8	1 062.4	22.0
Inorganic chemical agents	<i>thou tons</i>	4.3	16.3	5.6	23.6
Dye and tanning materials	<i>thou tons</i>	0.2	0.1	0.7	0.3
Paper, cardboard and products from these materials	<i>thou tons</i>	0.3	0.1	1.0	0.5
Textile yarn and cloth			2.9		6.1
Products from non-metallic mineral resources			6.7		10.4
Lime and cement			6.0		7.3
Non-ferrous metals			3.6		7.0
Various imperfect metals	<i>thou tons</i>	1.1	2.0	1.2	1.9
Other metal products			3.2		6.2
Energy generating machinery and equipment			4.6		0.9
Machinery for specific sectors			3.7		3.4
Metal processing machines			0.9		0.6
Non-specific machinery and equipment			4.2		4.0
Communication and sound recording equipment			0.6		2.5
Electric machinery and devices, their components			15.1		16.3
Cars			26.3		20.5
Motor vehicles	<i>pieces</i>	207.0	4.2	64.0	0.5
Trucks	<i>pieces</i>	152.0	1.8	106.0	0.5
Other cars	<i>pieces</i>	4 261.0	15.2	278.0	11.3
Clothes and accessories			2.3		5.8
Special instruments and devices			1.2		1.5
Finished products not included in other categories			5.8		11.0
Nonmonetary gold			224.6		162.8

<sup>1</sup> source: NSC, in f.o.b. prices

1 half '02		1 half '03			
<i>in kind</i>	<i>mil. US\$</i>	<i>in kind</i>	<i>mil. US\$</i>	<i>unit of measur.</i>	
	<b>234.1</b>		<b>233.7</b>		<b>Total</b>
	2.7		4.0		Milk products and bird's eggs
1.4	0.2	6.1	0.8	<i>thou tons</i>	Cereals and cereals products
19.7	5.4	17.5	5.1	<i>thou tons</i>	Vegetables and Fruits
8.6	3.0	7.5	2.7	<i>thou tons</i>	Sugar, sugar-ware and honey
0.5	0.8	0.6	1.4	<i>thou tons</i>	Coffee,tea,cocoa and spices
	0.3		0.3		Beverage foods
	14.5		9.4		Tobacco and tobacco products
15.4	14.1	9.9	9.1	<i>thou tons</i>	Raw tobacco and tobacco waste
	10.1		4.9		Cattle hides, hide and peltry
0.0	0.0	0.2	0.0	<i>thou tons</i>	Oil seeds and oil fruits
31.0	21.3	18.2	16.0	<i>thou tons</i>	Textile fibers
30.3	20.5	17.8	15.3	<i>thou tons</i>	Cotton
0.7	0.6	0.4	0.4	<i>thou tons</i>	Wool
	1.8		0.5		Raw fertilizers
291.2	0.9	30.7	0.2	<i>thou tons</i>	Stone, sand and gravel
103.7	5.7	151.2	5.9	<i>thou tons</i>	Metal ores and scrap
	1.0		1.0		Primary goods
44.2	16.1	58.8	20.8	<i>thou tons</i>	Oil and Oil products
151.2	3.5	261.1	3.4	<i>mil.kwh</i>	Electric energy
2.3	10.8	1.7	3.6	<i>thou tons</i>	Inorganic chemical agents
0.3	0.1	0.2	0.1	<i>thou tons</i>	Dye and tanning materials
0.2	0.1	1.0	0.5	<i>thou tons</i>	Paper, cardboard and products from these materials
	1.8		4.1		Textile yarn and cloth
	3.4		10.2		Products from non-metallic mineral resources
	3.2		5.1		Lime and cement
	1.8		3.9		Non-ferrous metals
0.4	0.5	0.4	0.4	<i>thou tons</i>	Various imperfect metals
	2.8		1.5		Other metal products
	0.2		0.6		Energy generating machinery and equipment
	2.1		3.3		Machinery for specific sectors
	0.3		0.2		Metal processing machines
	1.7		1.5		Non-specific machinery and equipment
	0.2		0.1		Communication and sound recording equipment
	7.6		7.5		Electric machinery and devices, their components
	9.4		6.4		Cars
42.0	0.3	18.0	0.1	<i>pieces</i>	Motor vehicles
49.0	0.3	194.0	0.9	<i>pieces</i>	Trucks
1 423.0	6.7	619.0	2.0	<i>pieces</i>	Other cars
	2.5		6.5		Clothes and accessories
	0.3		0.3		Special instruments and devices
	6.5		3.3		Finished products not included in other categories
	91.1		99.9		Nonmonetary gold

**Table I.13: Import of Major Types of Products<sup>1</sup>**

Products	unit of measur <sup>e</sup> m.	2001		2002	
		in kind	mil. US\$	in kind	mil. US\$
<b>Total</b>			<b>467.2</b>		<b>586.8</b>
Cereals and cereals products	thou tons	94.1	11.3	190.4	20.4
Sugar, sugar-ware and honey	thou tons	23.8	7.6	48.0	15.3
Coffee, tea, cocoa, spicery	thou tons	6.0	8.6	6.6	7.3
Beverages			6.1		9.6
Tobacco and tobacco products			12.6		9.5
Raw tobacco and tobacco waste	thou tons	1.1	2.0	1.0	1.7
Finished tobacco	thou tons	1 580.7	9.8	1 279.4	7.8
Mineral and raw fertilizers			4.5		5.9
Coal, coke and briquets	thou tons	345.6	6.4	888.2	13.9
Oil and Oil products	thou tons	335.8	70.7	386.8	85.6
Petroleum oils	thou tons	—	—	10.4	0.8
Oil products	thou tons	311.4	66.6	365.5	83.0
Gasoline for motor vehicles	thou tons	143.5	29.3	152.8	24.3
Kerosene	thou tons	45.1	12.8	129.8	42.5
Diesel fuel	thou tons	95.0	19.9	58.3	11.8
Other Oil products	thou tons	20.4	1.2	17.7	1.1
Natural gas	mil.m <sup>3</sup>	665.7	33.2	855.7	41.8
Electric energy	mil.kwh	322.0	9.8	384.9	9.7
Vegetable oils and fats	thou tons	5.3	2.9	6.4	3.5
Organic chemicals			3.0		4.5
Other carbohydrates	thou tons	0.0	0.0	0.1	0.1
Nonorganic chemicals	thou tons	59.1	17.5	76.8	19.0
Medicaments	thou tons	0.8	20.5	0.9	24.3
Volatile oils and perfumery	thou tons	14.5	10.0	16.6	11.7
Fertilizers	thou tons	21.8	1.9	29.2	2.6
Primary form plastic	thou tons	5.1	5.3	6.5	6.3
Chemicals and chemical products			6.6		6.5
Rubber goods			8.0		10.9
Rubber tire casing	mil.pieces	0.7	6.9	0.6	9.9
Paper, cardboard and paper products	thou tons	14.4	10.8	15.0	10.7
Textile yarn and cloth			16.0		16.3
Wrought artificial and textile cloth	mil.sq.m	28.6	6.8	48.4	9.7
Products from nonmetallic mineral resources			5.7		6.9
Cast iron and steel	thou tons	27.2	8.7	30.9	10.7
Metal products			13.2		10.8
Base metals produce	thou tons	15.2	9.0	11.7	7.6
Energy generating machinery and equipment			3.6		1.8
Machinery designated for specific sectors			22.8		50.4
Machinery and equipments for civil construction			9.7		12.4
Machinery for textile and leather industry			1.5		0.5
Machinery for food processing			0.9		0.7
Working machines, equipment for specific sectors of			6.4		21.2
Non-specific machinery and equipment			11.6		8.6
Office appliances and equipment for data processing			5.4		5.8
Machinery for automatic processing	thou pieces	58.8	3.6	46.2	4.0
Equipment for electric communication			6.0		10.5
Electric machines and devices			8.5		16.2
Electric devices for contact locking and breaking			1.0		5.3
Electric distribution equipment	thou tons	0.6	1.2	0.8	1.9
Cars			29.2		26.0
Motor vehicles	pieces	849.0	5.3	743.0	4.0
Trucks	pieces	81.0	1.9	184.0	3.5
Other cars	pieces	14 000.0	15.0	10 045.0	14.9
Car components and accessories			5.6		2.5
Furniture and components; bedding			3.4		3.7
Clothes and accessories			10.1		17.5
Foot-wear			4.8		5.6
Special scientific and control devices			6.6		9.5
Medical tools and devices			2.3		4.7
Various finished products not included in other categories			9.7		9.7

<sup>1</sup> source: NSC, in c. i. f. prices

1 half '02		1 half '03		
<i>in kind</i>	<i>mil. US\$</i>	<i>in kind</i>	<i>mil. US\$</i>	
	<b>266.2</b>		<b>294.2</b>	<b>Total</b>
121.2	12.8	57.4	6.5 <i>thou tons</i>	Cereals and cereals products
20.6	6.4	21.4	6.8 <i>thou tons</i>	Sugar, sugar-ware and honey
2.9	2.6	3.8	3.9 <i>thou tons</i>	Coffee, tea, cocoa, spicery
	4.0		5.5	Beverages
	4.6		6.2	Tobacco and tobacco products
0.7	1.0	0.8	1.1 <i>thou tons</i>	Raw tobacco and tobacco waste
751.1	3.6	668.7	5.1 <i>thou tons</i>	Finished tobacco
	2.0		3.3	Mineral and raw fertilizers
523.4	6.2	380.1	9.3 <i>thou tons</i>	Coal, coke and briquets
182.5	38.0	216.3	46.3 <i>thou tons</i>	Oil and Oil products
5.1	0.4	1.1	0.1 <i>thou tons</i>	Petroleum oils
174.2	37.1	207.5	45.1 <i>thou tons</i>	Oil products
71.9	9.3	84.1	16.0 <i>thou tons</i>	Gasoline for motor vehicles
61.3	20.1	60.3	19.5 <i>thou tons</i>	Kerosene
27.0	5.6	29.8	5.9 <i>thou tons</i>	Diesel fuel
10.9	0.6	28.9	1.8 <i>thou tons</i>	Other Oil products
476.0	22.5	323.7	15.3 <i>mil.m<sup>3</sup></i>	Natural gas
186.3	4.9	0.1	0.0 <i>mil.kwh</i>	Electric energy
3.0	1.9	4.2	2.8 <i>thou tons</i>	Vegetable oils and fats
	1.9		1.3	Organic chemicals
0.1	0.0	0.0	0.0 <i>thou tons</i>	Other carbohydrates
28.5	9.6	28.0	3.8 <i>thou tons</i>	Nonorganic chemicals
0.4	8.3	0.8	8.5 <i>thou tons</i>	Medicaments
6.2	4.7	11.0	7.9 <i>thou tons</i>	Volatile oils and perfumery
14.3	1.2	21.6	2.0 <i>thou tons</i>	Fertilizers
3.6	3.5	4.3	4.6 <i>thou tons</i>	Primary form plastic
	2.2		2.9	Chemicals and chemical products
	4.6		6.5	Rubber goods
0.3	4.0	0.3	6.1 <i>mil pieces</i>	Rubber tire casing
6.2	4.5	8.6	6.4 <i>thou tons</i>	Paper, cardboard and paper products
	8.0		7.8	Textile yarn and cloth
23.7	5.1	17.8	4.1 <i>mil.sq.m</i>	Wrought artificial and textile cloth
	2.8		4.4	Products from nonmetallic mineral resources
15.9	5.5	14.7	6.4 <i>thou tons</i>	Cast iron and steel
	4.8		7.5	Metal products
4.5	3.4	5.9	3.9 <i>thou tons</i>	Base metals produce
	1.1		0.5	Energy generating machinery and equipment
	26.5		18.9	Machinery designated for specific sectors
	5.9		3.7	Machinery and equipments for civil construction
	0.4		0.5	Machinery for textile and leather industry
	0.2		3.9	Machinery for food processing
	11.4		7.5	Working machines, equipment for specific sectors of industry
	5.1		4.1	Non-specific machinery and equipment
27.2	2.8		3.2	Office appliances and equipment for data processing
	2.0	16.1	2.1 <i>thou pieces</i>	Machinery for automatic processing
	5.9		4.1	Equipment for electric communication
	4.8		10.5	Electric machines and devices
	0.8		0.4	Electric devices for contact locking and breaking
0.3	0.7	0.8	2.3 <i>thou tons</i>	Electric distribution equipment
	11.6		14.6	Cars
312.0	1.6	387.0	2.0 <i>pieces</i>	Motor vehicles
114.0	2.6	71.0	0.9 <i>pieces</i>	Trucks
3 703.0	5.7	7 099.0	8.7 <i>pieces</i>	Other cars
	1.0		2.4	Car components and accessories
	1.5		2.5	Furniture and components; bedding
	7.1		7.4	Clothes and accessories
	2.9		2.4	Foot-wear
	1.8		5.8	Special scientific and control devices
	0.9		4.0	Medical tools and devices
	4.6		4.8	Various finished products not included in other categories

**Table I.14.: Impact of Price and Quantity on the Volume of Export<sup>1</sup>**

	2003	2003	2002	Index of		
	mil US \$	mil US \$	mil US \$	prices	physic. vol	value
	n603 <sup>2</sup> *p603 <sup>3</sup>	n603*p602	n602*p602	A / B	B / C	A / C
	A	B	C			
Milk and milky products	1.4	1.7	0.6	0.85	2.77	2.36
Butter	0.2	0.1	0.0	1.45	5.13	7.42
Cheese	1.0	1.1	0.9	0.84	1.19	1.01
Natural honey	0.3	0.3	0.0	1.06	30.13	31.99
Fresh tomatos	0.2	0.2	0.5	1.00	0.43	0.43
Other fresh vegetables	2.6	3.2	3.0	0.83	1.05	0.87
Nuts	1.6	1.0	1.2	1.70	0.79	1.34
Fruits	0.3	0.2	0.4	1.20	0.66	0.79
Tea	1.4	1.0	0.7	1.46	1.38	2.02
Wheat	0.4	0.7	0.0	0.63	469.33	293.79
Wheat flour	0.2	0.2	0.1	0.91	1.48	1.35
Meat and tinned meat products	0.1	0.1	0.0	2.41	1.30	3.15
Sugar	2.0	2.0	2.7	0.99	0.73	0.73
Molasses	0.3	0.4	0.3	0.81	1.34	1.08
Bread, wheat confectionery goods	0.1	0.1	0.0	2.52	1.10	2.76
Ice-cream	1.4	1.2	1.1	1.21	1.04	1.26
Tobacco non-fermented	8.9	8.9	14.1	1.00	0.63	0.63
Tobacco fermented	0.1	0.1	0.0	2.24	5.07	11.35
Cement, portland cement	1.8	1.6	0.9	1.10	1.79	1.97
Ores and non-ferrous metals concentrates	0.1	0.1	0.2	1.21	0.45	0.54
Kerosene	20.6	21.3	15.8	0.97	1.35	1.30
Electric energy	3.4	6.0	3.5	0.57	1.73	0.98
Combinations of non-ferrous metals	2.5	2.1	1.9	1.23	1.09	1.34
Lamb and sheep hides	0.5	0.5	0.7	1.02	0.72	0.73
Waste paper	0.1	0.0	0.0	7.28	2.83	20.65
Paper & cardboard containers	0.2	0.3	0.0	0.64	6.24	3.99
Washed wool	0.1	0.2	0.2	0.76	0.71	0.54
Other wool, including animal's hear	0.3	0.5	0.3	0.60	1.51	0.90
Woollen yarn	0.2	0.1	0.2	1.85	0.51	0.95
Cotton fiber, uncombed	14.7	11.5	20.4	1.27	0.56	0.72
Cotton fiber, combed	0.6	0.7	0.0	0.87	20.19	17.62
Cotton yarn	0.4	0.1	0.0	3.21	8.70	27.96
Cotton fabric	0.2	0.1	0.2	1.28	0.64	0.82
Jute hessians	0.1	0.1	0.1	1.00	1.36	1.36
Yarn made of synthetic & artificial	1.3	1.5	0.5	0.86	3.00	2.57
Cloth made of synthetic & artificial	0.3	0.4	0.1	0.82	6.15	5.06
Carpets	0.2	0.2	0.1	1.20	2.02	2.43
Knitted underwear	0.2	0.8	0.2	0.23	5.49	1.27
Foot-gear and socks	0.1	0.2	0.2	0.61	1.28	0.78
Jute bags & packets	0.4	0.3	0.2	1.25	2.03	2.53
Corrugated sheet, slate	3.3	2.8	2.2	1.17	1.24	1.46
Cast and rolled glass	4.3	10.0	0.0	0.43	2664.42	1148.69
Glass container (bottles, jars)	0.4	0.5	0.1	0.80	6.49	5.18
Gold	99.9	79.8	91.1	1.25	0.88	1.10
Silver	1.0	0.8	0.7	1.22	1.26	1.54
Non-ferrous metals wastes and scraps	2.7	3.5	2.3	0.78	1.49	1.16
Copper wastes and scraps	0.3	0.8	0.7	0.38	1.24	0.47
Primary Aluminum alloys	0.9	0.6	0.6	1.35	1.04	1.40
Aluminum wastes and scraps	2.4	2.4	2.5	1.01	0.98	0.98
Tackle	0.1	0.1	0.1	1.11	0.68	0.76
Bulldozers	0.2	0.2	0.1	0.79	1.71	1.36
Other engeniaring tools & machinery	0.1	0.1	0.1	0.82	1.50	1.23
AC electric motors	0.3	0.0	0.0	11.16	2.16	24.11
AC electric generators	0.1	0.4	0.0	0.31	11.33	3.55
Electric transformers	0.3	0.1	0.2	3.47	0.43	1.50
Electric accumulators	0.1	0.0	0.1	19.64	0.12	2.34
Electric incandescent lamps	6.5	6.4	6.8	1.01	0.95	0.97
Tractors	0.2	0.1	2.8	1.69	0.04	0.07
Autobus	0.7	0.5	0.7	1.33	0.78	1.03
Second-hand motor cars	1.1	1.2	3.2	0.92	0.39	0.36
Trucks	0.6	0.5	0.1	1.11	5.12	5.68
Special-purpose cars	0.3	0.1	0.1	1.84	1.33	2.45
<b>Full range of goods</b>	<b>196.9</b>	<b>182.2</b>	<b>186.0</b>	<b>1.08</b>	<b>0.98</b>	<b>1.06</b>
<b>Total export</b>	<b>233.7</b>		<b>234.1</b>			<b>1.00</b>
<b>The share in total export</b>	<b>0.84</b>		<b>0.79</b>			

<sup>1</sup> calculations in this table are based on the NSC data on exports of goods at f. o. b.prices<sup>2</sup> physical volume of exports for first half of 2003<sup>3</sup> estimate export price for first half of 2003

Table I.15: Impact of Price and Quantity on the Volume of Import<sup>1</sup>

	2003	2003	2002	Index of		
	mil US \$	mil US \$	mil US \$	prices	physic. vol	value
	n603 <sup>2</sup> *p603 <sup>3</sup>	n603*p602	n602*p602	A / B	B / C	A / C
	A	B	C			
Meat and tinned meat products	1.5	1.9	0.3	0.81	5.78	4.70
Fish and shellfish	0.5	0.5	0.4	0.89	1.38	1.22
Tea	1.4	1.6	1.2	0.89	1.34	1.20
Wheat	3.2	3.5	7.9	0.90	0.45	0.40
Wheat flour	1.0	1.2	0.5	0.87	2.21	1.93
Wheat flour	0.5	0.7	2.8	0.72	0.26	0.18
Other seeds	0.4	0.3	0.1	1.57	3.29	5.15
Sunflower-seed oil	1.9	1.9	0.8	0.99	2.29	2.27
Other vegetable oils	3.5	2.2	1.1	1.57	2.11	3.31
Margarine	0.8	0.7	0.5	1.03	1.40	1.44
Sugar	5.8	4.9	1.8	1.19	2.76	3.28
Chocolate	2.3	1.6	1.2	1.42	1.29	1.83
Fruit juices	0.6	0.6	0.6	1.10	1.00	1.10
Water, including mineral	1.0	1.9	1.2	0.56	1.56	0.87
Bear	3.3	3.4	2.3	0.97	1.50	1.45
Grape wines & musts	0.4	0.5	0.2	0.77	2.97	2.28
Tobacco fermented	0.9	1.1	0.3	0.77	3.48	2.69
Cigarettes and cigars	5.1	3.2	3.6	1.61	0.89	1.43
Gyps	0.5	0.9	0.3	0.61	2.68	1.64
Cement, portland cement	0.9	0.8	0.4	1.14	2.12	2.42
Asbestos	2.0	1.3	1.1	1.52	1.17	1.78
Ores and non-ferrous metals concentrates	2.2	1.2	1.8	1.78	0.69	1.23
Coal, other	9.2	4.5	6.2	2.03	0.73	1.48
Gasoline for motor vehicles	15.0	10.2	7.8	1.48	1.31	1.93
Kerosene	19.5	19.7	20.1	0.99	0.98	0.97
Diesel oil	5.9	6.2	5.6	0.95	1.11	1.05
Liquid fuel (mazut)	1.8	1.5	0.6	1.16	2.65	3.08
Lubricants & other oil products	1.9	2.1	1.5	0.93	1.39	1.28
Natural gas	15.3	15.3	22.5	1.00	0.68	0.68
Liquefied gas	0.4	0.3	0.4	1.17	0.96	1.12
Oil asphalt	1.0	1.1	0.4	0.93	2.41	2.24
Hydrate of sodium	0.6	0.6	0.7	1.01	0.80	0.81
Non-ferrous compounds	1.8	1.7	2.2	1.07	0.76	0.82
Nitrogen fertilizers	2.0	1.8	1.2	1.14	1.54	1.75
Lacquer paint goods	2.6	2.6	1.1	1.01	2.32	2.33
Essential oils	0.5	0.4	0.4	1.29	0.86	1.11
Laundry soap	1.9	1.7	0.6	1.12	3.07	3.43
Face soap	0.5	0.5	0.4	1.06	1.39	1.47
Detergents	1.7	1.5	1.2	1.15	1.18	1.36
Matches	0.5	0.5	0.3	0.87	1.77	1.54
Polyethylene	0.4	0.4	0.3	0.98	1.40	1.38
Other plastics	3.6	3.2	2.7	1.13	1.16	1.31
Polyethylene film	0.5	0.7	0.4	0.74	1.93	1.43
Motor vehicles tyres	2.1	1.8	1.0	1.14	1.76	2.01
Truck & autobus tyres	2.7	2.6	1.8	1.05	1.40	1.47
Other tyres	1.7	0.9	1.1	1.87	0.84	1.56
Cattle hides	1.7	1.1	0.7	1.58	1.44	2.28
Timber	1.2	1.0	0.9	1.31	1.08	1.41
Wood shaving boards	0.9	0.9	0.6	1.02	1.58	1.61
News-print	0.5	0.5	0.4	0.93	1.36	1.27
Plain paper & cardboard	1.1	1.3	1.7	0.85	0.75	0.63
Enamel-paper, coated board	0.4	0.4	0.4	1.19	0.89	1.06
Other paper & cardboard	0.4	0.3	0.3	1.20	1.16	1.40
Paper & cardboard containers	1.2	1.0	0.7	1.20	1.46	1.75
Yarn made of synthetic & artificial	1.2	1.1	1.1	1.07	0.97	1.04
Artificial and synthetic thread cloth	2.5	2.3	3.2	1.07	0.74	0.79
Knitted upper clothes	1.8	2.0	1.6	0.89	1.27	1.14
Knitted underwear	1.1	0.5	1.2	2.27	0.39	0.89
Glazed facing slab for walls	1.0	0.8	0.6	1.38	1.17	1.61
Glass container (bottles, jars)	0.4	0.3	0.1	1.24	4.08	5.04
Rolled ferrous metals	2.6	2.2	1.9	1.22	1.15	1.41
Rods, angles, shaped sections	1.4	1.1	1.5	1.30	0.69	0.90
Other pipes	1.1	1.0	0.9	1.14	1.06	1.21
Copper wastes and scraps	0.4	0.2	0.1	1.71	4.26	7.28
Copper alloy (brass, bronze)	0.5	0.4	0.5	1.26	0.75	0.95
Primary Aluminum alloys	0.5	0.4	0.8	1.28	0.55	0.71
Tungsten and tungsten goods	1.1	1.4	0.9	0.79	1.60	1.27
Air-conditioners	0.6	1.2	0.5	0.51	2.29	1.18
Other machinery for repairing (keeping) roads	0.4	0.3	2.3	1.38	0.13	0.19
Clothes washers	0.6	0.6	0.3	1.00	1.92	1.92
Computers	1.0	1.3	0.5	0.75	2.71	2.04
Electric transformers	1.6	1.2	0.5	1.25	2.67	3.34
TV	0.6	0.4	0.3	1.44	1.57	2.26
Autobus	7.9	10.2	5.3	0.77	1.92	1.48
Motor vehicles	2.0	1.9	1.6	1.02	1.24	1.26
Second-hand motor cars	0.7	0.6	0.3	1.04	2.09	2.16
Trucks	0.8	1.1	1.7	0.71	0.61	0.43
<b>Full range of goods</b>	<b>172.2</b>	<b>156.9</b>	<b>144.3</b>	<b>1.10</b>	<b>1.09</b>	<b>1.19</b>
<b>Total import</b>	<b>294.2</b>		<b>266.2</b>			<b>1.11</b>
<b>The share in total import</b>	<b>0.59</b>		<b>0.54</b>			

<sup>1</sup> calculations on this table are based on the NSC data on imports of goods in c. i. f. prices<sup>2</sup> physical volume of imports for first half of 2003<sup>3</sup> accounted import price for first half of 2003

## Tables I.16 - I.25: Export of Basic Goods by Countries

Table I.16: Export of Goods to Russia

Products	unit of measurement	1999		2000		2001		2002		I half '02		I half '03	
		in kind	mil. US\$	in kind	mil. US\$	in kind	mil. US\$	in kind	mil. US\$	in kind	mil. US\$	in kind	mil. US\$
<b>Total</b>			<b>70.7</b>		<b>65.1</b>		<b>64.5</b>		<b>80.0</b>		<b>38.1</b>		<b>40.2</b>
Cotton fiber, uncombed	thou tons	6.4	5.3	12.3	12.1	16.4	12.7	36.1	26.1	16.4	11.1	11.3	9.5
Raw tobacco	thou tons	29.1	34.0	21.0	25.2	24.4	21.2	21.3	17.8	14.2	13.3	8.0	7.5
Filament lamps	mln pieces	85.5	4.2	110.5	6.1	97.6	5.1	106.6	5.2	46.9	2.2	56.2	2.9
Kerosene	thou tons	1.8	0.5	1.1	0.4	7.4	2.5	12.6	4.3	4.3	1.4	5.1	1.6
Ready-made garments, all types			0.7		0.5		0.4		3.9		1.6		4.6
Spare parts and equip. for motor vehicles			1.0		1.2		2.6		2.9		1.1		1.2
Sugar	thou tons	0.3	0.2	1.1	0.4	2.5	1.0	7.7	2.7	0.8	0.3	5.0	1.9
Fruits	thou tons	17.7	1.3	23.8	1.5	18.1	1.3	14.0	1.2	2.4	0.3	2.0	0.3
Other fresh vegetables	thou tons	10.1	1.0	4.0	0.5	2.5	0.5	6.2	0.9	4.0	0.5	7.7	1.3
Fresh tomatoes	thou tons	9.7	1.3	6.6	1.0	2.2	0.5	3.5	0.7	1.6	0.5	0.7	0.2
Other products of ferrous metals			0.3		0.4		0.7		0.7		0.4		0.3
Products of non-organic chemistry			0.9		1.1		0.6		0.6		0.3		0.3
Spare parts for machinery and equipment			0.2		0.5		0.1		0.5		0.1		0.1
Other seeds	thou tons	9.7	1.6	0.2	0.1	0.1	0.0	0.0	0.5	0.0	0.5	0.1	0.0
Cotton cloth	mil. linear m.	2.8	1.0	3.1	0.8	0.7	0.2	1.1	0.4	0.4	0.2	0.2	0.1
Tackle	pieces	419.0	0.2	477.0	0.2	1 066.0	0.4	867.0	0.4	294.0	0.1	165.0	0.1
Other non-organic compounds			0.8		0.6		0.5		0.4		0.2		0.2
Cast and rolled glass	thou. sq. m.	—	—	24.9	0.1	—	—	207.9	0.4	—	—	779.3	1.5
Onion	thou tons	34.2	1.8	11.3	0.7	3.4	0.2	5.6	0.4	1.2	0.0	0.6	0.0
Electric transformers	thou pieces	6.9	0.2	...	0.3	16.7	0.3	18.0	0.3	10.8	0.1	4.5	0.1
Woollen cloth	mil. linear m.	0.1	0.3	0.1	0.3	0.1	0.1	0.1	0.2	0.0	0.0	—	—
Textile underclothes	thou pieces	354.3	0.1	386.6	0.2	197.2	0.3	236.2	0.1	59.2	0.1	179.0	0.0
Other footwear			0.0		0.1		0.0		0.1		0.0		0.0
Dried fruits	thou tons	9.6	1.3	2.0	0.3	0.2	0.1	0.2	0.1	0.1	0.0	0.1	0.0
Bed-linen, table-linen and other			0.2		0.3		0.1		0.0		0.0		0.1
Other knitted goods			0.1		0.2		0.1		0.0		0.0		0.0
Meat and tinned meat products	thou conv tins	8.3	0.0	—	—	—	—	4.6	0.0	0.2	0.0	4.5	0.0
Spare parts for machinery			0.1		0.1		0.1		0.0		0.0		0.0
Instruments for punching and drilling			0.3		0.1		0.1		0.0		0.0		0.0
Rotary pumps	thou pieces	709.0	0.0	280.0	0.0	651.0	0.0	21.0	0.0	—	—	10.0	0.0



Table I.17: Export of Goods to Kazakhstan

Products	unit of measurement	1999		2000		2001		2002		I half '02		I half '03	
		in kind	mil. US\$	in kind	mil. US\$	in kind	mil. US\$	in kind	mil. US\$	in kind	mil. US\$	in kind	mil. US\$
<b>Total</b>			<b>45.0</b>		<b>33.4</b>		<b>39.0</b>		<b>36.8</b>		<b>5.6</b>		<b>19.9</b>
Other plastic products			1.2		2.6		2.6		3.9		0.8		2.2
Ferrous metals cisterns, butts, boxes	<i>thou tons</i>	0.4	0.3	0.2	0.1	0.5	1.7	1.0	3.5	0.1	0.5	0.1	0.0
Electric energy	<i>mil. kwh</i>	892.2	15.8	1 072.7	11.6	1 048.6	10.4	424.4	3.4	0.1	0.0	37.3	0.3
Ice-cream	<i>thou tons</i>	0.2	0.1	0.5	0.2	1.3	0.7	2.9	2.2	0.3	0.2	1.6	1.4
Cheese	<i>thou tons</i>	0.4	0.6	0.4	0.5	0.8	1.1	1.4	2.0	0.2	0.3	0.8	1.0
Corrugated asbestos boards	<i>mil.conv.plates</i>	40.9	2.0	28.5	1.2	39.3	1.7	41.8	1.9	3.6	0.1	21.7	1.1
Electric filament lamps	<i>mil. pieces</i>	2.6	0.1	2.3	0.1	11.5	0.7	28.7	1.6	4.9	0.3	14.1	0.8
Glass, casted and rolled	<i>mil. sq. m</i>	0.3	0.4	0.0	0.0	0.0	0.0	0.8	1.5	—	—	1.0	1.9
Cement, portland cement	<i>thou tons</i>	40.0	1.0	87.4	1.9	60.1	1.4	65.2	1.5	18.9	0.4	68.2	1.7
Milk and milky products	<i>thou tons</i>	0.9	0.1	3.5	0.5	3.6	0.9	4.1	0.9	0.9	0.2	5.8	1.3
Sugar	<i>thou tons</i>	8.8	3.0	1.1	0.4	1.7	0.5	2.6	0.9	—	—	—	—
Motor vehicles	<i>pieces</i>	260.0	2.0	264.0	1.8	332.0	2.3	106.0	0.7	31.0	0.2	37.0	0.3
Molasses	<i>thou tons</i>	6.0	1.4	8.9	0.9	3.4	0.7	1.9	0.4	0.5	0.1	1.7	0.3
Glass containers (bottles, jars)	<i>thou pieces</i>	4 664.3	0.3	3 812.0	0.3	2 079.4	0.2	5 514.1	0.3	187.5	0.0	6 387.4	0.4
Other special-purpose equipment			0.5		0.1		0.1		0.3		0.0		0.3
Other non-organic compounds			0.1		0.2		0.5		0.3		0.1		0.3
Spare parts for machinery and equipment			1.0		0.7		0.4		0.2		0.0		0.2
Butter	<i>thou tons</i>	0.1	0.1	0.0	0.0	0.2	0.4	0.1	0.1	0.0	0.0	0.1	0.2
Raw tobacco	<i>thou tons</i>	0.1	0.0	1.3	1.1	0.5	0.5	0.2	0.1	0.0	0.0	0.5	0.3
Equipment for food industry			1.0		0.0		0.0		0.1		0.0		0.3
Cigarettes and cigars	<i>mil. pieces</i>	—	—	17.8	0.3	115.5	0.6	1.3	0.1	1.3	0.1	—	—
Water, including mineral	<i>thou litres</i>	507.9	0.4	1 869.7	0.5	1 003.0	0.4	224.8	0.1	3.7	0.0	336.3	0.1
Tea	<i>tons</i>	32.1	0.0	9.0	0.0	26.9	0.0	48.9	0.0	—	—	37.1	0.0
Trucks	<i>pieces</i>	25.0	0.5	157.0	1.0	25.0	0.3	10.0	0.0	2.0	0.0	16.0	0.1

Table I.18: Export of Goods to Uzbekistan

Products	unit of measurement	1999		2000		2001		2002		I half '02		I half '03	
		in kind	mil. US\$	in kind	mil. US\$	in kind	mil. US\$	in kind	mil. US\$	in kind	mil. US\$	in kind	mil. US\$
<b>Total</b>			<b>46.6</b>		<b>89.4</b>		<b>48.0</b>		<b>27.8</b>		<b>9.2</b>		<b>4.8</b>
Electric energy	<i>mil. kwh</i>	970.0	31.6	1 925.6	64.3	1 038.1	34.7	523.3	17.5	89.0	3.0	49.4	1.7
Corrugated asbestos boards	<i>mil.conv.plates</i>	18.9	1.0	30.1	1.5	42.9	1.9	45.6	2.1	25.2	1.2	8.5	0.4
Electric filament lamps	<i>mil. pieces</i>	4.7	0.2	0.3	0.0	12.4	0.9	22.7	1.6	12.6	0.9	11.2	0.8
Other mineral materials			0.7		0.7		0.8		1.0		1.0		0.2
Gyps	<i>thou tons</i>	1 001.0	0.6	595.0	0.9	525.0	0.5	230.2	0.8	210.0	0.7	4.5	0.0
Sugar	<i>thou tons</i>	1.5	0.5	0.0	0.0	—	—	0.8	0.2	0.3	0.1	—	—
Spare parts for machinery & equipment			1.5		2.7		2.9		0.2		—		0.0
Motor cars	<i>pieces</i>	200.0	1.1	182.0	1.0	37.0	0.2	15.0	0.2	1.0	0.0	17.0	0.3
Glass, casted and rolled	<i>mil. sq. m</i>	0.1	0.2	0.0	0.1	—	—	0.1	0.1	—	—	0.0	0.0
Other special purpose equipment			0.4		0.4		0.4		0.1		0.0		0.0
Tractors	<i>pieces</i>	8.0	0.0	176.0	2.1	27.0	0.2	11.0	0.1	1.0	0.0	3.0	0.2
Tea	<i>tons</i>	45.9	0.1	94.5	0.2	8.4	0.0	84.3	0.1	48.2	0.0	105.9	0.1
Other communication equipment			—		0.0		0.0		0.0		0.0		—
Wheat flour	<i>thou tons</i>	10.5	2.4	4.0	0.7	0.1	0.0	0.1	0.0	—	—	0.0	0.0
Trucks	<i>pieces</i>	18.0	0.2	16.0	0.1	33.0	0.4	2.0	0.0	1.0	0.0	6.0	0.0
Other chemical products			—		—		0.0		0.0		0.0		0.0
Diesel engines	<i>pieces</i>	—	—	65.0	1.0	49.0	0.7	1.0	0.0	1.0	0.0	—	—
Special-purpose cars	<i>pieces</i>	—	—	—	—	2.0	0.0	2.0	0.0	—	—	1.0	0.1

Table I.19: Export of Goods to Belarus

Products	unit of measurement	1999		2000		2001		2002		I half '02		I half '03	
		in kind	mil. US\$	in kind	mil. US\$	in kind	mil. US\$	in kind	mil. US\$	in kind	mil. US\$	in kind	mil. US\$
<b>Total</b>			<b>4.9</b>		<b>3.0</b>		<b>3.2</b>		<b>1.3</b>		<b>0.7</b>		<b>1.0</b>
Tobacco	thou tons	2.2	1.8	2.5	2.0	2.4	1.8	1.0	0.5	0.5	0.3	0.6	0.4
Cotton fiber, uncombed	thou tons	0.6	0.5	0.2	0.2	0.7	0.8	0.5	0.4	0.1	0.1	0.2	0.2
Other ferrous metals products			0.6		0.4		0.1		0.2		0.1		0.1
Other seeds	thou tons	0.1	0.5	0.0	0.1	0.0	0.1	0.0	0.1	0.0	0.1	—	—
Low-voltage equipment			0.1		0.1		0.1		0.0		0.0		0.0

Table I.20: Export of Goods to Switzerland

Products	unit of measurement	1999		2000		2001		2002		I half '02		I half '03	
		in kind	mil. US\$	in kind	mil. US\$	in kind	mil. US\$	in kind	mil. US\$	in kind	mil. US\$	in kind	mil. US\$
<b>Total</b>			<b>18.1</b>		<b>34.1</b>		<b>124.2</b>		<b>96.4</b>		<b>79.8</b>		<b>49.9</b>
Precious metals			17.7		33.5		124.1		96.0		79.4		49.8
Cotton fiber	thou tons	0.2	0.2	0.5	0.6	—	—	—	—	—	—	—	—

Table I.21: Export of Goods to China

Products	unit of measurement	1999		2000		2001		2002		I half '02		I half '03	
		in kind	mil. US\$	in kind	mil. US\$	in kind	mil. US\$	in kind	mil. US\$	in kind	mil. US\$	in kind	mil. US\$
<b>Total</b>			<b>25.3</b>		<b>44.1</b>		<b>19.4</b>		<b>41.1</b>		<b>19.6</b>		<b>12.6</b>
Animal hides <sup>1</sup>	thou pieces	289.2	2.3	403.1	3.7	886.7	5.9	906.8	15.0	534.9	8.1	12.3	0.3
Aluminium wastes and scrap	thou tons	36.5	13.5	40.7	18.5	3.5	1.9	9.0	4.2	4.5	2.4	4.6	2.4
Ferrous metal wastes and scarp	thou tons	0.6	0.0	29.1	2.2	105.9	4.2	193.6	3.3	94.3	1.8	120.5	1.7
Primary Aluminium alloys	thou tons	4.0	2.2	0.3	0.1	0.2	0.2	3.7	2.4	0.9	0.6	1.0	0.9
Copper wastes and scarp	thou tons	4.8	3.1	7.3	4.9	0.8	0.7	2.5	1.4	1.1	0.6	1.4	0.3
Washed wool	thou tons	—	—	0.3	0.4	0.2	0.2	0.7	1.0	0.1	0.2	0.1	0.1
Greasy wool	thou tons	0.2	0.2	0.6	0.3	0.2	0.1	0.1	0.1	—	—	—	—
Other tyres			—		—		0.0		—		—		3.7

<sup>1</sup> NBKR estimates are specified in kind

Table I.22 Export of Goods to USA

Products	unit of measurement	1999		2000		2001		2002		I half '02		I half '03	
		in kind	mil. US\$	in kind	mil. US\$	in kind	mil. US\$	in kind	mil. US\$	in kind	mil. US\$	in kind	mil. US\$
<b>Total</b>			<b>11.2</b>		<b>2.8</b>		<b>7.1</b>		<b>36.1</b>		<b>19.1</b>		<b>5.3</b>
Kerosene	thou tons	—	—	0.0	0.0	0.6	0.2	72.6	27.0	34.5	12.9	11.5	4.3
Products of non-organic chemistry			0.0		0.0		5.7		7.2		5.4		0.2
Ready-made garments			0.1		1.1		0.9		0.8		0.4		0.4
Other precious metal products			—		0.5		0.1		0.1		—		—
Other instruments and devices			0.4		0.5		0.0		0.0		—		—
Cotton fiber	thou tons	0.1	0.1	0.1	0.1	—	—	—	—	—	—	—	—

Table I.23: Export of Goods to Turkey

Products	unit of measurement	1999		2000		2001		2002		I half '02		I half '03	
		in kind	mil. US\$	in kind	mil. US\$	in kind	mil. US\$	in kind	mil. US\$	in kind	mil. US\$	in kind	mil. US\$
<b>Total</b>			<b>4.6</b>		<b>7.2</b>		<b>13.8</b>		<b>16.4</b>		<b>8.0</b>		<b>3.8</b>
Animal hides <sup>1</sup>	<i>thou pieces</i>	32.8	0.1	733.5	0.9	765.6	1.2	1 263.6	2.7	506.0	0.9	166.9	0.2
Other fresh vegetables	<i>thou tons</i>	1.5	0.3	2.1	0.8	9.9	4.0	7.6	2.5	4.9	1.6	2.4	0.9
Nuts	<i>tons</i>	47.8	0.0	1 014.9	0.4	777.2	0.3	2 895.2	2.3	1 192.8	1.0	717.7	0.9
Tractors	<i>pieces</i>	—	—	87.0	0.5	341.0	5.4	173.0	2.2	132.0	1.7	—	—
Cotton fiber	<i>thou tons</i>	1.2	1.0	0.9	0.8	0.5	0.4	3.1	2.0	2.0	1.2	0.6	0.5
Other communication equipment			—		0.1		—		1.3		—		—
Kerosene	<i>thou tons</i>	1.2	0.4	0.5	0.2	1.8	0.7	1.7	0.6	1.0	0.4	1.7	0.6
Motor vehicles	<i>pieces</i>	306.0	1.2	335.0	1.5	62.0	0.5	57.0	0.6	39.0	0.4	0.0	0.0
Wool yarn	<i>thou tons</i>	0.1	0.3	—	—	—	—	0.1	0.3	0.0	0.2	—	—
Hand tools			0.0		0.1		0.0		0.1		0.1		0.1
Other means of transport			0.0		0.1		0.3		0.1		0.1		—
Other seeds	<i>thou tons</i>	2.5	0.4	1.1	0.2	0.4	0.1	0.2	0.1	0.1	0.0	0.2	0.1
Other machinery for repairing (keeping) roads	<i>pieces</i>	—	—	—	—	2.0	0.1	2.0	0.0	2.0	0.0	—	—
Leather made of animal hides	<i>square metre</i>	—	—	0.0	0.0	9.2	0.4	0.0	0.0	—	—	—	—
Timber	<i>tons</i>	—	—	0.1	0.0	0.1	0.1	0.0	0.0	0.0	0.0	21.6	0.0
Trucks	<i>pieces</i>	1.0	0.0	150.0	0.8	—	—	—	—	—	—	—	—
Other fertilizers	<i>thou tons</i>	—	—	—	—	—	—	0.0	0.0	—	—	0.0	0.1
Other tyres			—		—		—		—		—		0.3

<sup>1</sup> NBKR estimates are specified in kind

Table I.24: Export of Goods to Germany

Products	unit of measurement	1999		2000		2001		2002		I half '02		I half '03	
		in kind	mil. US\$	in kind	mil. US\$	in kind	mil. US\$	in kind	mil. US\$	in kind	mil. US\$	in kind	mil. US\$
<b>Total</b>			<b>148.2</b>		<b>144.6</b>		<b>94.4</b>		<b>1.8</b>		<b>0.9</b>		<b>1.0</b>
Raw tobacco	thou tons	0.0	0.0	169.6	0.2	0.2	0.0	0.3	0.4	0.1	0.2	0.2	0.3
Other fresh vegetables	tons	—	—	28.7	0.2	19.1	0.3	0.1	0.3	0.0	0.3	0.2	0.1
Vegetable waxes	tons	—	—	6.8	0.1	—	—	0.0	0.2	0.0	0.1	0.0	0.1
Ferrous metals cisterns, butts, boxes	tons	11.2	0.0	12.8	0.0	—	—	2.2	0.1	0.7	0.1	—	—
Ferrous metals wastes and scarp	thou tons	0.3	0.1	0.3	0.2	0.3	0.1	0.5	0.1	0.3	0.1	0.2	0.1
Precious metals			144.0		141.2		91.8		—		—		—
Spare parts, accessories for machinery			0.0		—		0.0		—		—		—

Table I.25: Export of Goods to United Kingdom

Products	unit of measurement	1999		2000		2001		2002		I half '02		I half '03	
		in kind	mil. US\$	in kind	mil. US\$	in kind	mil. US\$	in kind	mil. US\$	in kind	mil. US\$	in kind	mil. US\$
<b>Total</b>			<b>12.4</b>		<b>18.8</b>		<b>14.1</b>		<b>0.9</b>		<b>0.8</b>		<b>0.0</b>
Other products of non-organic chemistry			0.4		0.6		0.5		0.3		0.3		—
Leather made of animal hides	square metre	—	—	—	—	—	—	0.1	0.2	0.1	0.2	—	—
Kerosene	thou tons	0.2	0.1	0.1	0.0	0.2	0.1	0.1	0.0	0.0	0.0	0.0	0.0
Non-organic chemical products	thou tons	—	—	0.3	4.6	0.1	2.7	—	—	—	—	—	—
Other instruments and devices			0.0		0.0		0.0		0.0		0.0		0.0

## Tables I.26 - I.33: Export of Basic Goods by Countries

Table I.26: Import of Goods from Russia

Products	unit of measurement	1999		2000		2001		2002		I half '02		I half '03	
		in kind	mil. US\$	in kind	mil. US\$	in kind	mil. US\$	in kind	mil. US\$	in kind	mil. US\$	in kind	mil. US\$
<b>Total</b>			<b>109.4</b>		<b>132.6</b>		<b>85.1</b>		<b>116.7</b>		<b>50.7</b>		<b>69.0</b>
Kerosene	thou tons	11.9	2.0	6.0	1.3	4.4	1.1	22.5	7.8	11.7	4.1	10.8	3.6
Vehicle gasoline	thou tons	100.7	18.9	34.2	9.9	6.9	1.4	46.3	6.9	33.4	4.2	35.4	6.7
Truck tyres	thou pieces	27.9	1.2	39.9	2.4	42.5	2.3	95.0	4.4	35.2	1.6	51.5	2.5
Paper and cardboard	thou tons	3.9	2.0	5.6	3.2	6.0	3.0	6.9	3.3	2.8	1.3	1.6	0.8
Sugar	thou tons	6.6	2.2	5.5	1.7	0.4	0.2	13.1	3.3	5.0	1.2	1.5	0.5
Lacquer paint goods			1.9		2.7		2.3		3.1		0.6		1.8
Chocolate	thou tons	0.6	1.6	0.9	2.0	1.2	2.0	1.8	3.1	0.6	0.8	0.7	1.5
Other ferrous metals products			3.6		4.3		4.3		3.1		0.9		2.1
Other products of ferrous metallurgy			0.6		0.8		0.6		3.1		0.2		0.4
Heavy distillates (diesel fuel)	thou tons	7.3	1.5	0.7	0.1	1.1	0.3	14.0	3.0	4.1	0.7	5.2	1.6
Other petroleum products			1.2		2.4		2.8		2.9		1.2		1.0
Beer	thou litres	1 450.0	0.9	3 323.3	2.4	4 363.2	2.4	5 860.6	2.9	2 663.6	1.4	4 939.9	2.3
Medicaments			1.6		3.0		2.6		2.8		1.4		2.6
Other non-organic compounds			1.0		0.7		1.0		2.5		0.4		1.0
Rods, angles, shaped sections	thou tons	6.5	1.2	8.7	2.4	8.4	1.8	9.8	2.3	5.3	1.2	4.1	1.3
Motor vehicles tyres	thou pieces	172.8	1.8	225.9	3.3	159.1	1.8	195.7	2.1	69.1	0.8	117.8	1.5
Rolled ferrous metals	thou tons	2.6	1.1	2.4	1.4	3.7	1.8	4.5	2.0	2.5	1.2	3.0	1.4
Timber	thou cub m	30.1	1.6	42.0	2.2	29.9	1.5	36.4	2.0	14.1	0.7	20.3	1.5
Nitrogen fertilizers	thou tons	11.3	0.9	18.9	1.7	18.5	1.3	20.9	1.7	9.2	0.7	11.6	1.2
Detergents			0.9		1.7		1.8		1.7		0.7		0.9
Other lubricating oils			2.2		2.2		1.4		1.7		0.8		1.1
Other organic compounds			2.0		3.0		1.1		1.5		0.6		0.2
Fiber board	thou cub m	1 136.6	0.5	1 954.7	1.0	1 897.7	0.9	2 493.9	1.2	765.9	0.4	1 222.9	0.7
Other chemical products			1.3		1.1		0.9		1.2		0.5		0.5
Cosmetic			0.2		0.5		0.7		1.2		0.6		0.8
Spare parts, accessories for machinery			3.0		6.6		2.6		1.1		0.6		1.2
Wood shaving boards	thou cub m	22.0	0.6	26.2	1.0	10.2	0.7	65.5	1.0	3.5	0.4	5.5	0.8
Laundry soap			0.6		0.7		0.8		1.0		0.2		1.3
Autobus	pieces	54.0	0.3	61.0	0.2	50.0	2.2	589.0	1.0	275.0	0.4	355.0	1.2
Foil			0.2		0.4		1.1		0.9		0.3		0.2
Newsprint	thou tons	2.9	1.2	3.0	1.7	2.8	1.4	2.1	0.9	0.9	0.4	1.3	0.5

Table I.27: Import of Goods from Kazakhstan

Products	unit of measurement	1999		2000		2001		2002		I half '02		I half '03	
		in kind	mil. US\$	in kind	mil. US\$	in kind	mil. US\$	in kind	mil. US\$	in kind	mil. US\$	in kind	mil. US\$
<b>Total</b>			<b>72.7</b>		<b>57.4</b>		<b>81.8</b>		<b>123.9</b>		<b>56.5</b>		<b>66.1</b>
Kerosene	<i>thou tons</i>	7.5	1.6	3.9	1.1	26.2	8.0	92.3	30.0	40.9	13.2	47.9	15.3
Other coal	<i>thou tons</i>	1 002.4	18.1	716.1	10.5	331.5	6.1	870.2	13.5	519.0	6.2	377.9	9.2
Vehicle gasoline	<i>thou tons</i>	35.4	6.8	34.6	7.3	64.1	13.9	73.0	12.0	26.5	3.3	43.2	7.9
Wheat	<i>thou tons</i>	96.4	7.8	119.4	9.4	74.3	6.7	157.7	11.6	101.2	7.9	45.4	3.2
Heavy distillates (diesel fuel)	<i>thou tons</i>	49.6	8.4	21.6	5.5	39.4	10.1	33.7	7.2	19.0	4.3	22.8	4.1
Cigarettes and cigars	<i>mlrd pieces</i>	0.5	4.2	0.5	5.3	0.6	6.2	0.4	5.3	0.2	2.2	0.3	3.8
Rolled ferrous metals	<i>thou tons</i>	2.3	0.6	6.0	1.7	6.1	1.4	6.2	1.9	2.4	0.6	2.7	1.1
Asbestos	<i>thou tons</i>	18.2	2.7	9.0	1.0	13.2	1.2	14.1	1.8	4.4	0.5	10.1	1.6
Gyps	<i>thou tons</i>	74.5	0.9	27.5	0.3	119.3	1.4	507.4	1.1	119.9	0.3	323.6	0.5
Wheat flour	<i>thou tons</i>	8.3	1.4	2.8	0.3	1.9	0.2	9.6	1.0	7.4	0.7	2.6	0.3
Liquid fuel (mazut)	<i>thou tons</i>	28.3	1.4	25.9	1.7	4.5	0.3	15.1	0.9	8.3	0.4	28.9	1.8
Maize	<i>thou tons</i>	5.2	0.4	6.2	0.4	9.1	0.8	3.1	0.4	1.2	0.2	1.5	0.2
Cables and copper wire	<i>thou tons</i>	0.1	0.3	0.2	0.4	0.4	0.8	0.2	0.3	0.1	0.1	0.2	0.2
Malt	<i>thou tons</i>	1.3	0.4	2.1	0.7	1.2	0.4	0.9	0.3	0.6	0.2	0.3	0.1
Scums and calx	<i>thou tons</i>	81.5	0.5	93.7	0.4	134.3	0.3	82.5	0.3	28.1	0.1	18.3	0.1
Coal	<i>thou tons</i>	21.0	0.5	3.3	0.0	7.5	0.1	12.3	0.1	1.5	0.0	1.3	0.0



Table I.28: Import of Goods from Uzbekistan

Products	unit of measurement	1999		2000		2001		2002		I half '02		I half '03	
		in kind	mil. US\$	in kind	mil. US\$	in kind	mil. US\$	in kind	mil. US\$	in kind	mil. US\$	in kind	mil. US\$
<b>Total</b>			<b>50.0</b>		<b>75.1</b>		<b>66.7</b>		<b>60.1</b>		<b>30.7</b>		<b>19.1</b>
Natural gas	mil kub. m.	574.6	33.0	651.9	33.2	665.7	33.2	855.7	41.8	476.0	22.5	323.7	15.3
Electric energy	mil kwh	0.2	0.0	194.8	6.5	287.4	9.6	267.0	8.9	136.9	4.6	0.1	0.0
Vehicle gasoline	thou tons	21.9	3.1	27.5	6.6	30.4	6.7	10.1	1.9	1.3	0.3	1.3	0.3
Cement	thou tons	35.7	0.7	50.4	1.0	40.9	0.8	55.3	1.1	15.9	0.3	34.0	0.7
Heavy distillates (diesel fuels)	thou tons	20.4	2.4	47.1	8.0	46.9	7.6	7.0	1.0	3.9	0.6	1.5	0.2
Nitrogen fertilizers	thou tons	5.6	0.4	7.4	0.6	0.6	0.0	6.8	0.5	4.0	0.3	9.8	0.7
Liquid fuels (mazut)	thou tons	2.8	0.2	39.5	2.4	15.9	0.9	2.6	0.1	2.6	0.1	0.0	0.0
Other lubricating oils	thou tons	0.1	0.0	0.5	0.1	2.5	0.6	0.5	0.1	0.1	0.0	0.3	0.1
Kerosene	thou tons	10.0	1.6	0.6	0.2	0.7	0.2	0.2	0.1	0.2	0.1	0.0	0.0
Other organic compounds			0.1		—		0.1		0.1		0.1		0.0
Cotton-seed oil	thou tons	0.0	0.0	—	—	—	—	0.0	0.0	0.0	0.0	0.0	0.0
Crude oil	thou tons	17.5	1.2	17.4	2.6	—	—	—	—	—	—	—	—

Table I.29: Import of Goods to Belarus

Products	unit of measurement	1999		2000		2001		2002		I half '02		I half '03	
		in kind	mil. US\$	in kind	mil. US\$	in kind	mil. US\$	in kind	mil. US\$	in kind	mil. US\$	in kind	mil. US\$
<b>Total</b>			<b>5.3</b>		<b>3.9</b>		<b>6.0</b>		<b>5.1</b>		<b>3.4</b>		<b>2.0</b>
Tractors	<i>pieces</i>	15.0	0.3	—	—	180.0	2.3	420.0	2.0	409.0	1.8	—	—
Medicaments			0.1		0.2		0.3		0.3		0.2		0.2
Refrigerator equipment			0.0		0.0		0.1		0.3		0.2		0.1
Trucks	<i>pieces</i>	7.0	0.5	38.0	0.8	5.0	0.1	9.0	0.2	9.0	0.2	4.0	0.1
Wood shaving boards	<i>thou cub m</i>	1.1	0.2	0.6	0.2	1.0	0.2	0.9	0.2	0.2	0.1	0.4	0.1
Other machinery and mechanism	<i>pieces</i>	2.0	0.0	6.0	0.1	26.0	0.7	4.0	0.1	1.0	0.0	2.0	0.2
Furniture			0.0		0.1		0.1		0.1		0.1		0.1
Motor vehicles tyres	<i>thou pieces</i>			—	—	2.6	0.0	9.6	0.1	4.4	0.1	7.2	0.1
Synthetic and artificial thread braids	<i>thou tons</i>	0.0	0.0	0.1	0.1	0.0	0.0	0.1	0.1	0.0	0.1	—	—
Refrigerator	<i>pieces</i>	3 029.0	0.7	1 260.0	0.3	1 428.0	0.3	86.0	0.0	41.0	0.0	16.0	0.0
Cars	<i>pieces</i>	13.0	0.0	4.0	0.0	6.0	0.0	0.0	0.0	0.0	0.0	0.0	0.0
Special cars	<i>pieces</i>	—	—	10.0	0.4	7.0	0.2	—	—	—	—	—	—
Stockinet			0.1		0.1		0.1		—		—		0.0
Sugar	<i>thou tons</i>	4.5	1.5	0.5	0.1	0.2	0.1	—	—	—	—	0.5	0.2
Facing glazed tile	<i>thou sq. m.</i>	74.2	0.4	59.0	0.2	50.8	0.2	10.6	0.0	10.6	0.0	—	—

Table I. 30: Import of Goods from China

Products	unit of measurement	1999		2000		2001		2002		I half '02		I half '03	
		in kind	mil. US\$	in kind	mil. US\$	in kind	mil. US\$	in kind	mil. US\$	in kind	mil. US\$	in kind	mil. US\$
<b>Total</b>			<b>36.9</b>		<b>36.9</b>		<b>48.5</b>		<b>59.0</b>		<b>30.0</b>		<b>27.4</b>
Textile	<i>mil linear m</i>	31.7	6.7	35.6	7.3	22.6	4.7	22.4	5.4	10.5	2.8	7.9	2.2
Non-ferrous compounds	<i>thou tons</i>	4.3	5.3	4.0	5.6	6.1	7.8	4.6	5.4	1.8	1.8	1.1	1.4
Equipment for paper and cardboard production			0.0		0.2		1.1		3.8		3.8		0.3
Knitted upper clothes	<i>thou pieces</i>	1 828.3	0.9	2 963.7	1.3	2 893.9	1.5	6 340.1	3.1	2 153.0	1.1	2 961.7	1.3
Other knitted garments			1.3		1.3		1.2		3.0		1.3		1.6
Footwear of leather or artificial leather	<i>thou pair</i>	3 410.8	1.4	2 445.8	1.1	3 295.7	1.9	4 715.4	2.6	2 360.1	1.4	26.4	0.0
Ready-made garments			1.9		0.9		0.8		2.6		0.7		1.6
Yarn made of synthetic & artificial			0.5		0.3		1.3		2.3		1.1		1.2
Knitted underwear	<i>thou pieces</i>	6 841.9	0.6	7 047.1	0.7	5 531.6	0.8	12 075.0	1.6	5 442.2	0.7	1 611.8	0.5
Other communication equipment			0.0		0.5		1.9		1.3		1.2		2.0
Other plastic products			0.2		0.4		1.8		1.2		0.8		0.3
Telephone, teletype			0.2		0.1		0.7		1.2		1.2		0.0
Hydrate of sodium			0.3		0.2		0.6		1.1		0.4		0.4
Sport footwear	<i>thou pair</i>	1 923.7	0.7	260.0	0.1	554.5	0.2	1 767.9	1.0	172.3	0.2	3 022.1	1.5
Legwear garment	<i>mil pair</i>	30.2	0.6	...	0.7	...	0.5	...	0.9	...	0.5	...	0.0
Other products of ferrous metals			3.4		1.1		0.5		0.7		0.5		0.1
Tobacco non-fermented	<i>thou tons</i>	0.7	1.1	1.0	1.4	0.7	1.1	0.5	0.7	0.5	0.7	—	—
Tungsten and tungsten goods			0.0		0.0		0.7		0.6		0.4		0.6
Molybdenum & molybdenum goods			0.0		0.0		0.5		0.6		0.3		—
Other special purpose equipment			0.1		0.0		0.8		0.6		0.3		0.1
Other footwear			0.4		0.9		0.1		0.6		0.3		0.0
Polyethylene bags			0.2		0.8		1.4		0.5		0.3		0.2
Nitrogen fertilizers			0.2		0.1		0.6		0.3		0.1		0.1
Jute fiber	<i>thou tons</i>	0.2	0.1	0.7	0.4	1.0	0.5	0.4	0.2	0.2	0.1	0.5	0.2
Other instruments and devices			0.2		0.5		2.1		0.1		0.1		0.1
Equipment for light industry			3.0		0.7		0.1		0.0		—		0.0
Equipment with electrical warming			0.0		0.1		0.1		0.0		—		0.0
Semi-manufactures footwear			0.5		0.8		1.1		0.5		0.4		0.0

Table I.31: Import of Goods from USA

Products	unit of measurement	1999		2000		2001		2002		I half '02		I half '03	
		in kind	mil. US\$	in kind	mil. US\$	in kind	mil. US\$	in kind	mil. US\$	in kind	mil. US\$	in kind	mil. US\$
<b>Total</b>			<b>54.2</b>		<b>53.8</b>		<b>26.8</b>		<b>47.4</b>		<b>16.8</b>		<b>21.6</b>
Medicaments			8.0		13.9		14.1		16.9		5.2		2.6
Second-hand clothes			0.2		2.4		1.4		3.3		1.5		1.4
Wheat flour	<i>thou tons</i>	0.5	0.1	0.0	0.0	—	—	6.4	2.9	4.4	2.0	0.3	0.2
Ready-made garments, excluding knitted clothes			2.2		1.0		0.5		2.3		1.3		0.4
Medical instruments and devices			2.4		1.9		1.5		1.8		0.3		0.6
Other optical instruments and devices			1.1		0.5		0.2		1.5		0.1		0.1
Meat and tinned meat products	<i>thou tons</i>	0.8	0.3	1.8	0.8	1.3	0.7	1.8	1.1	0.4	0.2	2.3	1.4
Wheat	<i>thou tons</i>	31.4	7.7	95.3	21.8	—	—	0.1	0.2	0.0	0.0	—	—
Other machinery for repairing (keeping) roads	<i>pieces</i>	—	—	—	—	—	—	3.0	0.7	1.0	0.3	—	—
Other vegetable oils	<i>thou tons</i>	5.1	4.5	0.5	0.5	—	—	0.7	0.6	0.7	0.6	2.6	3.0
Other foodwear			0.1		0.1		0.1		0.5		0.4		0.2
Tarpaulin	<i>thou tons</i>	0.0	0.4	—	—	0.0	0.9	0.0	0.4	0.0	0.3	0.0	0.1
Motor vehicles	<i>pieces</i>	5.0	0.1	13.0	0.3	20.0	0.5	14.0	0.4	4.0	0.2	1.0	0.0
Spare parts, accessories for machinery			0.3		0.7		1.8		0.3		0.1		0.9
Rice	<i>thou tons</i>	0.9	0.5	—	—	—	—	0.5	0.2	0.5	0.2	0.5	0.2
Ready-made garments			0.9		0.4		0.3		0.1		0.1		0.1
Sunflower-seed oil	<i>thou tons</i>	0.0	0.0	0.0	0.0	0.0	0.0	0.1	0.1	0.1	0.1	0.0	0.0
Cigarettes and cigars	<i>mil pieces</i>	0.1	0.7	0.0	0.4	0.0	0.1	0.0	0.0	0.0	0.0	0.0	0.0
Airplane	<i>pieces</i>	—	—	—	—	—	—	—	—	—	—	1.0	6.0

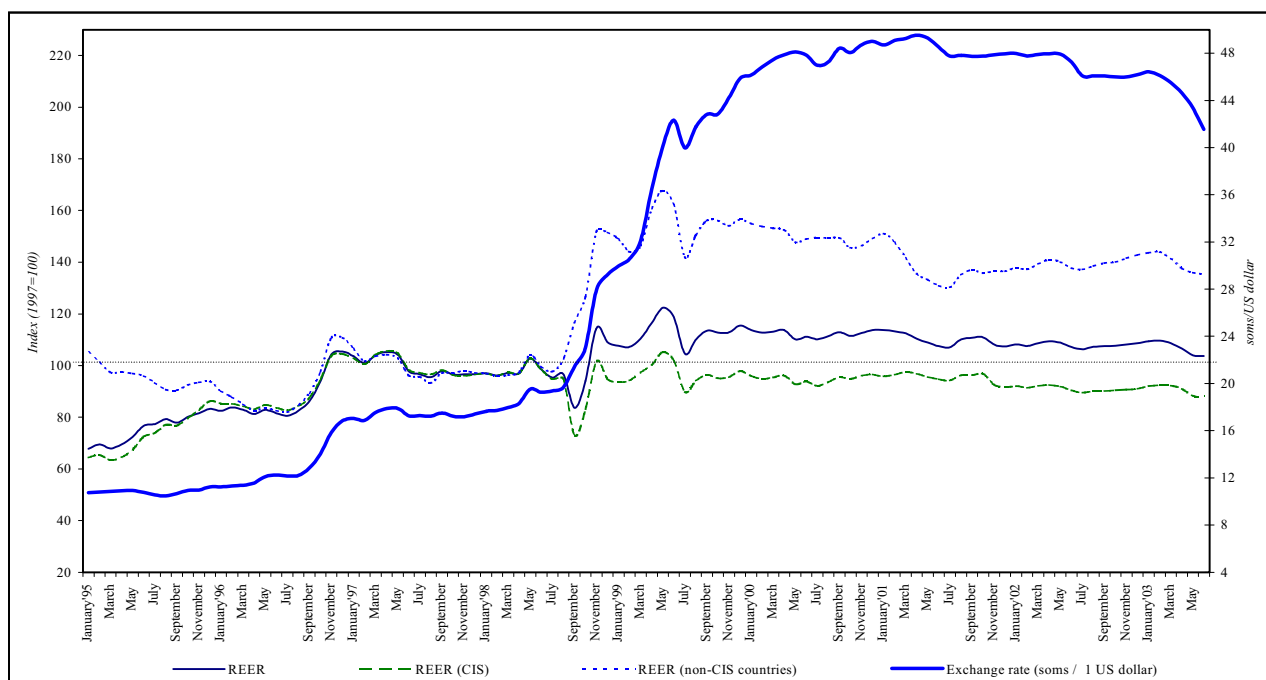
Table I.32: Import of Goods from Germany

Products	unit of measurement	1999		2000		2001		2002		I half '02		I half '03	
		in kind	mil. US\$	in kind	mil. US\$	in kind	mil. US\$	in kind	mil. US\$	in kind	mil. US\$	in kind	mil. US\$
<b>Total</b>			<b>47.3</b>		<b>25.2</b>		<b>24.3</b>		<b>31.4</b>		<b>12.2</b>		<b>16.9</b>
Autobus	<i>pieces</i>	18.0	0.2	29.0	0.1	3.0	0.0	6 639.0	8.9	2 432.0	3.3	4 810.0	4.8
Medical facilities			—		0.6		0.4		2.6		0.2		3.0
Other special equipment			0.7		1.1		1.0		1.5		1.3		0.3
Combines	<i>pieces</i>	40.0	2.0	12.0	0.2	44.0	0.5	54.0	1.2	1.0	0.0	—	—
Cosmetic			0.4		0.6		1.1		1.1		0.5		0.7
Medicaments			1.5		0.6		0.5		0.9		0.1		0.5
Other acids			0.4		0.6		0.3		0.7		0.4		0.5
Equipment with electric and nonelectrical heating unit			—		0.1		0.0		0.7		0.6		0.1
Other tyres	<i>thou pieces</i>	132.3	0.3	201.0	0.4	248.8	0.7	210.8	0.6	108.5	0.3	101.3	0.3
Other plastic products			0.7		0.5		0.6		0.5		0.2		0.2
Equipmet for tobacco processing			—		1.0		0.6		0.5		0.1		0.1
Other paper goods			0.1		0.1		0.4		0.4		0.2		0.0
Aluminium goods			0.5		0.4		0.5		0.4		0.2		0.3
Spare parts, accessories for machinery			1.3		0.3		0.5		0.3		0.2		0.2
Other communication equipment			—		0.1		0.2		0.3		0.0		0.1
Sugar	<i>thou tons</i>	0.4	0.2	0.0	0.0	3.6	0.8	1.3	0.3	0.7	0.2	—	—
Special cars	<i>pieces</i>	—	—	4.0	0.4	2.0	0.0	1.0	0.3	—	—	3.0	0.0
Other special electric machines and devices			—		0.1		0.1		0.2		0.0		0.0
Other instruments and apparatus			—		0.1		0.2		0.2		0.2		0.2
Other chemical products(drying oil & etc.)			—		0.1		0.2		0.2		0.1		0.0
Motor vehicles	<i>pieces</i>	2 584.0	2.3	7 621.0	4.6	10 221.0	6.4	60.0	0.5	31.0	0.3	21.0	0.2
Spare parts and equipment for vehicles			—		0.2		0.1		0.2		0.1		0.3
Cigarettes and cigars	<i>mil pieces</i>	0.1	1.7	0.2	2.3	0.1	0.9	0.0	0.1	0.0	0.0	0.0	0.1
Lacquer paint goods	<i>thou tons</i>	—	—	0.1	0.1	0.1	0.2	0.1	0.1	0.0	0.0	0.0	0.0
Motor vehicles tyres	<i>thou pieces</i>	—	—	4.9	0.1	1.9	0.1	2.3	0.1	0.7	0.0	1.9	0.1
Other products of ferrous metals			0.8		0.2		0.1		0.1		0.0		0.0
Centrifugal pumps	<i>pieces</i>	322.0	0.2	1 064.0	0.3	663.0	0.1	474.0	0.0	133.0	0.0	410.0	0.0

Table I.33: Import of Goods from Turkey

Products	unit of measurement	1999		2000		2001		2002		I half '02		I half '03	
		in kind	mil. US\$	in kind	mil. US\$	in kind	mil. US\$	in kind	mil. US\$	in kind	mil. US\$	in kind	mil. US\$
<b>Total</b>			<b>23.1</b>		<b>26.8</b>		<b>15.8</b>		<b>17.0</b>		<b>8.1</b>		<b>13.5</b>
Knitted upper clothes			0.1		0.6		1.0		1.9		0.8		0.9
Other communication equipment			0.0		0.1		0.2		1.1		1.1		—
Knitted underwear			0.1		0.6		0.7		0.8		0.4		0.4
Furniture of all types			0.2		1.4		0.6		0.8		0.3		0.4
Other plastic products			0.3		0.7		0.4		0.5		0.2		0.3
Paper & cardboard containers			0.2		0.3		0.7		0.4		0.2		0.3
Other confectionery			0.1		0.1		0.3		0.4		0.3		0.2
Electric transformes	<i>thou pieces</i>	0.2	2.0	0.1	0.0	0.1	0.0	0.0	0.4	0.0	0.0	0.1	1.3
Ferrous metals constructions	<i>thou tons</i>	0.9	1.9	0.2	0.3	0.0	0.1	0.1	0.3	0.0	0.0	0.7	0.8
AC electric motors	<i>pieces</i>	132.0	0.5	172.0	0.7	206.0	0.5	161.0	0.3	143.0	0.2	10.0	0.1
Detergents	<i>thou tons</i>	1.3	0.9	0.7	0.5	0.3	0.2	0.3	0.2	0.2	0.2	0.1	0.1
Other paper goods			0.7		0.8		0.4		0.2		0.1		0.1
Bread, wheat confectionery goods	<i>thou tons</i>	0.4	0.1	0.2	0.1	0.3	0.1	0.5	0.2	0.2	0.1	0.0	0.0
Spare parts for machinery and equipment			0.4		0.8		0.6		0.2		0.2		0.1
Spare parts and equipment for motor vehicles			0.4		0.2		0.2		0.2		0.1		0.1
Other ferrous metals products			0.3		0.3		0.1		0.2		0.1		0.2
Tea	<i>tons</i>	85.9	0.1	36.2	0.1	143.6	0.2	227.2	0.1	74.2	0.0	236.6	0.2
Chocolate	<i>thou tons</i>	0.8	0.3	0.6	0.2	0.2	0.1	0.2	0.1	0.1	0.1	0.0	0.0
Other agricultural equipment			0.4		0.7		0.1		0.1		0.1		0.1
Polymer containers			0.3		0.2		0.1		0.1		0.1		0.0
Refrigerating equipment			0.1		0.1		0.1		0.1		0.0		0.1
Paper & cardbord	<i>thou tons</i>	0.2	0.3	0.2	0.3	0.1	0.1	0.1	0.1	0.1	0.0	0.0	0.0
Other woodworks			0.0		0.9		0.2		0.0		0.0		0.0
Ready-made garments of all types			0.6		0.5		0.5		0.0		0.0		0.0
Glass container (bottles, jars)	<i>mil pieces</i>	1.8	0.6	2.0	0.1	2.3	0.0	1.4	0.0	0.5	0.0	0.0	—

**Chart I.1. Exchange Rate and the Real Effective Exchange Rate Index**  
 (total, with CIS and non CIS countries)



**Table I.34: Real and Nominal Effective Exchange Rate Indices: total, by CIS countries and non-CIS countries<sup>1</sup>***(basic period - May 1997)*

	<i>REER</i>	<i>NEER</i>	<i>REER (CIS)</i>	<i>NEER (CIS)</i>	<i>REER (non-CIS countries)</i>	<i>NEER (non-CIS countries)</i>	<i>Exchange rate (soms / 1 US dollar)</i>
January'95	67.8	105.2	64.4	117.1	105.1	65.3	10.7389
February	69.5	100.7	65.4	110.8	101.1	67.1	10.8000
March	67.9	96.1	63.3	104.1	97.4	69.2	10.8525
April	69.5	93.0	64.5	99.6	97.5	70.8	10.9022
May	72.4	92.0	67.4	98.3	96.9	71.0	10.9400
June	76.7	93.1	72.4	99.9	95.9	70.8	10.7867
July	77.3	92.0	73.9	99.1	93.3	69.1	10.5578
August	79.2	93.1	77.1	101.3	90.7	68.0	10.4700
September	77.9	89.9	76.8	96.4	90.5	69.3	10.6775
October	80.2	89.7	79.6	95.3	92.4	71.5	10.9288
November	81.6	85.9	82.8	90.0	93.5	71.6	10.9744
December	83.3	84.3	86.2	87.5	93.9	72.4	11.2338
January'96	82.5	82.0	85.3	84.5	90.1	71.9	11.2378
February	83.8	81.9	85.2	84.4	87.8	72.4	11.3156
March	82.8	81.3	84.3	83.7	85.0	72.6	11.3688
April	81.3	81.4	83.1	83.6	82.6	73.3	11.5600
May	82.9	84.2	84.8	86.2	83.7	76.9	12.1188
June	81.6	83.7	83.7	85.4	82.5	77.3	12.2244
July	80.5	82.6	82.7	84.1	81.9	77.0	12.1563
August	82.6	82.3	84.3	83.6	84.8	77.6	12.2010
September	86.2	85.1	87.5	86.1	89.3	81.2	12.8350
October	93.9	92.0	94.5	93.0	97.6	88.3	14.0289
November	104.3	100.9	103.7	100.8	110.7	100.1	15.8356
December	105.4	105.0	104.4	104.5	110.7	105.3	16.8325
January'97	103.6	104.3	102.8	103.9	106.5	104.6	17.0413
February	100.9	101.2	100.6	100.8	101.8	101.3	16.8782
March	104.0	104.4	104.2	104.3	103.6	104.1	17.5634
April	105.2	105.3	105.7	105.3	104.2	105.0	17.8663
May	104.2	104.5	104.8	104.6	102.8	104.5	17.8857
June	97.8	100.2	98.5	100.4	96.1	99.9	17.2616
July	96.7	99.5	97.2	99.4	95.7	99.6	17.2762
August	95.5	96.9	96.5	97.4	93.2	95.5	17.2475
September	97.9	97.3	98.2	97.5	97.1	96.8	17.5046
October	96.5	95.2	96.4	95.3	97.0	95.1	17.2190
November	96.6	94.4	96.1	94.5	98.0	94.5	17.1888
December	96.7	94.5	96.5	95.1	97.2	93.4	17.4173
January'98	97.0	94.3	96.9	95.1	96.9	92.7	17.6435
February	96.1	93.6	96.0	94.4	96.0	92.2	17.7248
March	97.1	94.1	97.3	95.0	96.3	92.2	17.9777
April	97.0	94.0	97.1	94.5	97.4	93.3	18.3281
May	102.8	99.4	102.7	99.6	104.1	99.2	19.5238
June	98.5	97.3	98.4	97.7	99.6	96.6	19.2572
July	95.3	96.7	94.7	96.8	97.7	96.5	19.3845
August	96.7	94.9	94.7	93.9	102.6	97.8	19.6859
September	83.6	79.8	73.1	70.3	116.6	108.7	21.4430
October	94.0	80.5	83.1	68.7	126.7	117.8	23.0444
November	114.5	96.2	101.6	82.3	152.0	140.4	27.9862
December	109.1	93.7	94.7	78.0	151.5	146.3	29.2252
January'99	107.7	90.9	93.6	74.8	148.9	147.7	29.9584
February	107.2	89.6	94.2	73.5	144.0	146.9	30.5733



**Table I.34: (continued)**

	<i>REER</i>	<i>NEER</i>	<i>REER (CIS)</i>	<i>NEER (CIS)</i>	<i>REER (non-CIS countries)</i>	<i>NEER (non-CIS countries)</i>	<i>Exchange rate (soms / 1 US dollar)</i>
March	110.4	91.6	97.3	74.9	146.4	151.6	32.0831
April	116.5	97.8	100.2	77.8	160.7	170.6	36.4737
May	122.4	105.5	105.2	83.1	167.7	185.6	40.1410
June	118.8	108.9	101.9	85.0	162.2	192.8	42.3231
July	104.5	101.9	89.8	78.9	141.9	180.9	39.9855
August	110.1	105.7	94.0	80.6	150.6	191.4	41.7756
September	113.5	106.2	96.4	80.1	156.1	195.5	42.8174
October	112.7	105.8	95.1	78.5	156.1	197.2	42.8478
November	112.9	107.8	95.5	79.7	154.1	198.6	44.2404
December	115.5	110.5	97.8	80.8	156.5	203.3	45.8661
January'00	113.7	109.0	95.9	78.2	155.0	204.4	46.1658
February	112.8	108.6	94.9	77.6	153.8	203.9	46.8496
March	113.2	110.1	95.4	78.8	153.1	204.4	47.4691
April	113.8	110.6	96.1	79.3	152.4	203.8	47.8870
May	110.1	107.4	92.8	76.5	147.8	200.7	48.1138
June	111.2	108.3	93.8	76.9	149.0	204.6	47.8440
July	110.2	104.9	92.1	73.6	149.6	202.7	46.9929
August	111.4	104.4	93.7	73.6	149.3	200.2	47.2735
September	112.9	105.8	95.5	74.7	149.4	201.1	48.4232
October	111.5	104.4	94.8	73.8	145.6	197.9	48.0577
November	112.6	104.9	96.0	74.6	146.4	200.8	48.7261
December	113.7	105.3	96.5	74.4	149.2	206.0	49.0239
January'01	113.7	104.6	95.8	73.0	151.1	209.4	48.7077
February	113.3	104.3	96.5	73.2	147.7	206.1	49.0873
March	112.5	103.1	97.5	72.9	141.6	197.0	49.2613
April	110.4	101.6	96.8	72.2	135.5	189.5	49.5489
May	108.8	101.3	95.6	71.8	133.2	188.8	49.2861
June	107.5	98.6	94.7	70.3	130.9	183.5	48.5289
July	107.1	96.3	94.2	68.9	130.3	179.0	47.7796
August	110.1	96.3	96.2	68.6	135.1	180.3	47.8356
September	110.8	96.0	96.3	68.2	137.1	181.2	47.7412
October	111.0	95.4	96.8	68.1	135.7	178.2	47.7665
November	108.2	92.2	92.6	64.5	136.6	179.3	47.8836
December	107.4	91.9	91.7	63.8	136.5	181.4	47.9665
January'02	108.2	91.9	92.1	63.2	137.8	183.0	47.9893
February	107.6	91.2	91.4	62.7	137.2	180.7	47.7802
March	108.7	91.9	92.1	62.4	139.4	181.4	47.9195
April	109.4	92.3	92.4	62.5	141.0	182.1	47.9610
May	108.9	92.4	91.9	62.5	140.1	182.2	47.9319
June	107.2	91.2	90.4	61.7	137.7	179.4	47.2569
July	106.3	89.0	89.5	60.2	137.2	175.9	46.0705
August	107.3	89.1	90.2	60.3	138.5	175.2	46.0881
September	107.5	89.2	90.1	60.1	139.6	175.8	46.0788
October	107.8	88.5	90.5	59.9	140.2	174.9	46.0127
November	108.2	87.9	90.7	59.6	141.5	176.7	45.9974
December	108.6	87.9	91.0	59.8	142.8	179.6	46.1778
January'03	109.4	88.2	92.0	60.1	143.6	181.8	46.4192
February	109.6	88.0	92.4	60.0	144.0	182.7	46.1189
March	108.7	87.2	92.3	59.7	141.4	178.9	45.5146
April	106.5	85.8	91.0	58.7	137.7	175.6	44.6220
May	103.9	84.6	88.3	57.4	136.0	174.7	43.3566
June	103.7	82.7	88.2	55.7	135.4	170.0	41.5617

**Table I.35: Geographic structure of net inflows of foreign direct investments in the Kyrgyz Republic**  
(in millions of US dollars)

	1999	2000	2001	2002	1 half '02	1 half '03
<b>TOTAL</b>	<b>44.4</b>	<b>-2.4</b>	<b>5.0</b>	<b>4.5</b>	<b>-7.4</b>	<b>5.9</b>
<b>Non-CIS countries</b>	45.5	-3.7	6.7	-11.8	-9.2	3.3
Great Britain	11.5	-3.8	-1.5	-1.7	-0.7	-0.8
German	12.1	8.2	18.4	-3.5	4.8	-1.0
India	-1.5	-0.8	0.6	0.3	0.0	0.1
Iran	-0.1	-0.5	0.1	-0.1	0.2	0.1
Ireland	0.0	0.9	-0.1	-0.2	—	0.0
Italy	2.5	-7.5	0.0	-6.2	-6.2	0.2
Canada	4.2	-5.9	-10.1	-9.6	-7.8	4.3
Cyprus	0.0	0.4	0.0	0.1	0.1	-0.2
China	0.7	-2.2	2.1	2.8	1.9	2.9
Korea	0.7	-0.1	-1.1	1.2	-4.6	1.6
Malaysia	0.1	3.0	0.1	—	—	—
Netherlands	0.0	9.2	1.3	-0.9	-0.2	-0.6
USA	7.0	1.5	-3.4	3.9	-4.2	-7.0
Turkey	12.7	-3.3	0.4	4.1	0.5	4.1
Switzerland	-1.7	-0.7	-4.1	-0.2	-0.2	0.1
Japan	0.2	-0.1	—	—	—	—
<b>CIS Countries</b>	-1.1	1.3	-1.7	16.3	0.3	2.4
Kazakhstan	-0.7	-0.1	-0.2	3.4	-0.2	0.4
Russia	-0.7	1.0	0.5	11.8	1.6	1.4

**Table I.36: Sectorial structure of net inflows of foreign direct investments in the Kyrgyz Republic**  
(in millions of US dollars)

	1999	2000	2001	2002	1 half '02	1 half '03
<b>TOTAL</b>	<b>44.4</b>	<b>-2.4</b>	<b>5.0</b>	<b>4.8</b>	<b>-7.4</b>	<b>5.9</b>
Industry	30.8	-3.1	19.7	0.7	0.5	4.9
Agriculture	0.3	0.5	-4.6	0.6	0.0	0.3
Communication	-0.4	-0.1	-1.3	-0.9	-0.4	-0.5
Construction	3.3	1.3	-1.3	-7.8	-5.5	2.6
Trade & catering	1.0	-1.4	-1.8	10.0	-0.3	2.0
Procurement companies	1.8	1.9	-3.6	-4.8	-3.3	-2.6
Information computing service	10.6	—	-1.1	-2.3	-1.0	-0.4
Real estate operations	—	—	-0.6	1.6	0.9	0.0
General commercial activity to provide the activity of the market	1.8	-1.6	-0.6	0.2	0.0	-0.2
Geology, geodesy & hydrometeorological service	2.2	3.9	-0.3	10.4	5.8	-3.5
Other types of material production sphere	—	—	-0.7	0.0	0.0	0.0
Housing and communal services	0.0	-5.1	-0.5	-0.3	0.0	0.1
Public health, physical training & social maintenance	-4.0	2.2	-0.9	-4.6	-4.6	2.0
Education	-0.1	0.1	-0.7	3.3	0.0	0.0
Institutions of culture & art	0.3	0.6	-1.0	0.6	0.1	0.0
Institutions and organizations of science	0.3	-0.1	-0.6	0.1	—	1.6
Finances, credit, insurance & provision of pensions	-1.0	-1.2	5.7	-0.4	0.0	-0.7
Legal services	-1.0	0.0	-0.7	0.0	0.0	0.0

**Table I.37: International reserves (end of period)**

	1999	2000	2001	2002	1 half '03
Reserves (mil. US dollars)	248.8	261.1	285.2	316.7	329.1
Liquid part of reserves (mil. US dollars)	183.2	204.0	234.6	289.7	302.7
Reserves in months of import of goods and facility (exclud. TA <sup>1</sup> )	4.3	4.9	6.3	5.6	5.9
Liquid part of reserves in months of import of goods and facility (exclud. TA <sup>1</sup> )	3.1	3.7	5.0	5.0	5.3

<sup>1</sup> technical assistance

**Table I.38: External Debt of the Kyrgyz Republic**

	1999	2000	2001	2002	1 half '03
ED <sup>1</sup> end-period ( <i>mil. US dollars</i> )	1 647.4	1 703.8	1 677.7	1 784.6	1 839.8
ED end-period ( <i>per cent of GDP</i> )	134.4	124.6	109.6	110.7	97.2 <sup>2</sup>
ED end-period ( <i>per cent of exports</i> <sup>3</sup> )	312.3	297.5	299.3	280.4	716.1
Schedule of ED payments <sup>4</sup> ( <i>mil. US dollars</i> )	137.1	160.8	172.5	131.9 <sup>6</sup>	58.1 <sup>6</sup>
Actual ED repayment <sup>4</sup> ( <i>mil. US dollars</i> )	111.4	154.7	171.1	115.8	35.2
ED service ratio ( <i>per cent of exports</i> )					
- as scheduled	26.0	28.1	30.8	20.7 <sup>6</sup>	13.8 <sup>6</sup>
- actual	21.1	27.0	30.5	18.2	7.2
PED <sup>5</sup> end-period ( <i>mil. US dollars</i> )	1 314.4	1 399.2	1 441.5	1 584.8	1 640.1
PED end-period ( <i>per cent of GDP</i> )	107.2	102.3	94.2	98.3	86.7 <sup>2</sup>
PED end-period ( <i>per cent of exports</i> <sup>3</sup> )	249.2	244.3	257.2	249.0	234.1
Schedule of PED <sup>4</sup> ( <i>mil. US dollars</i> )	53.4	77.6	71.7	86.7 <sup>6</sup>	49.9 <sup>6</sup>
Actual PED repayment <sup>4</sup> ( <i>mil. US dollars</i> )	30.4	48.1	71.7	69.0	28.6
PED service ratio ( <i>per cent of exports</i> )					
- as scheduled	10.1	13.5	12.8	13.6 <sup>6</sup>	12.0 <sup>6</sup>
- actual	5.8	8.4	12.8	10.8	5.9

<sup>1</sup> total external debt (including private and IMF loans)

<sup>2</sup> as against the projected annual GDP

<sup>3</sup> includes export of goods and services

<sup>4</sup> includes payments on interest and principal

<sup>5</sup> public external debt (including debt on IMF loans)

<sup>6</sup> excluding the Paris Club bilateral external debt restructuring

**Table I.39: Structure of the External Debt of the Kyrgyz Republic**  
(end of period)

	1999		2000		2001		2002		1 half '03	
	mil. US\$	in percent of the total	mil. US\$	in percent of the total	mil. US\$	in percent of the total	mil. US\$	in percent of the total	mil. US\$	in percent of the total
<b>Total external debt (I+II)</b>	<b>1 647.4</b>	<b>100.0</b>	<b>1 703.8</b>	<b>100.0</b>	<b>1 677.7</b>	<b>100.0</b>	<b>1 784.6</b>	<b>100.0</b>	<b>1 839.8</b>	<b>100.0</b>
<b>I. Public &amp; Government-guaranteed debt</b>	<b>1 314.4</b>	<b>79.8</b>	<b>1 399.2</b>	<b>82.1</b>	<b>1 441.5</b>	<b>85.9</b>	<b>1 584.8</b>	<b>88.8</b>	<b>1 640.1</b>	<b>89.1</b>
<b>I.1 Multilateral<sup>1</sup></b>	837.3	50.8	893.9	52.5	941.3	56.1	1 068.3	59.9	1 109.6	60.3
IMF	192.2	11.7	191.6	11.2	179.3	10.7	185.2	10.4	189.3	10.3
World Bank	341.2	20.7	374.8	22.0	388.4	23.1	457.0	25.6	478.1	26.0
EBRD	56.4	3.4	65.1	3.8	56.5	3.4	48.6	2.7	44.5	2.4
ADB	233.8	14.2	240.9	14.1	291.9	17.4	341.2	19.1	357.3	19.4
EEC <sup>2</sup>	0.0	0.0	0.0	0.0	0.0	0.0	0.0	0.0	0.0	0.0
Islamic Bank	6.9	0.4	10.3	0.6	12.3	0.7	18.6	1.0	20.3	1.1
IFAD	2.0	0.1	4.0	0.2	4.5	0.3	5.7	0.3	6.7	0.4
OPEC	0.0	0.0	2.3	0.1	3.5	0.2	6.7	0.4	7.6	0.4
Nordic Development Fund	4.8	0.3	4.9	0.3	4.7	0.3	5.3	0.3	5.8	0.3
<b>I.2 Bilateral</b>	430.3	26.1	465.2	27.3	466.8	27.8	506.5	28.4	520.6	28.3
<b>I.2.1 CIS countries</b>	170.9	10.4	178.6	10.5	178.1	10.6	182.4	10.2	185.0	10.1
Russia <sup>3</sup>	157.1	9.5	166.2	9.8	166.7	9.9	171.1	9.6	173.7	9.4
Uzbekistan	13.8	0.8	12.4	0.7	11.3	0.7	11.3	0.6	11.3	0.6
Kazakhstan <sup>2</sup>	0.0	0.0	0.0	0.0	0.0	0.0	0.0	0.0	0.0	0.0
Turkmenistan <sup>2</sup>	0.0	0.0	0.0	0.0	0.0	0.0	0.0	0.0	0.0	0.0
<b>I.2.2 Other countries (except for CIS)</b>	259.4	15.7	286.6	16.8	288.7	17.2	324.0	18.2	335.6	18.2
Turkey	41.0	2.5	41.0	2.4	43.6	2.6	44.5	2.5	45.4	2.5
Japan <sup>3</sup>	161.9	9.8	183.5	10.8	176.6	10.5	197.0	11.0	200.8	10.9
Germany <sup>3</sup>	21.1	1.3	20.4	1.2	20.0	1.2	26.5	1.5	32.0	1.7
Switzerland <sup>3</sup>	0.0	0.0	0.0	0.0	0.0	0.0	0.0	0.0	0.0	0.0
Pakistan	10.0	0.6	8.9	0.5	8.4	0.5	8.4	0.5	8.4	0.5
China	1.5	0.1	1.2	0.1	6.0	0.4	10.3	0.6	11.3	0.6
France <sup>3</sup>	3.8	0.2	3.5	0.2	3.5	0.2	4.1	0.2	4.3	0.2
Kuwait Fund	1.3	0.1	7.7	0.4	9.8	0.6	13.0	0.7	15.2	0.8
India	2.8	0.2	1.2	0.1	0.9	0.1	0.9	0.1	1.0	0.1
Korea	13.2	0.8	12.7	0.7	12.2	0.7	13.5	0.8	13.5	0.7
Denmark <sup>3</sup>	2.7	0.2	6.5	0.4	7.7	0.5	5.8	0.3	3.6	0.2
<b>I.3 Government-guaranteed debt</b>	46.8	2.8	40.1	2.4	33.3	2.0	10.1	0.6	9.9	0.5
<b>II. Private non-guaranteed debt</b>	<b>333.0</b>	<b>20.2</b>	<b>304.6</b>	<b>17.9</b>	<b>236.3</b>	<b>14.1</b>	<b>199.7</b>	<b>11.2</b>	<b>199.7</b>	<b>10.9</b>

<sup>1</sup> creditors acting on a multilateral basis including international financial institutions

<sup>2</sup> creditors to whom the Kyrgyz Republic does not have any liabilities to their credits

<sup>3</sup> Paris Club members

**Table I.40: Balance of International Investment Position of the Kyrgyz Republic  
as of January 1, 2003 and July 1, 2003**  
(mil. US dollars)

	<i>Position as of 01.01.03</i>	<i>Transactions</i>	<i>Price changes</i>	<i>Exchange rate changes</i>	<i>Other adjustments</i>	<i>Position as of 01.07.03</i>
<i>A</i>	<i>1</i>	<i>2</i>	<i>3</i>	<i>4</i>	<i>5</i>	<i>6</i>
<b>A. Assets</b>	565.6	46.9	10.7	48.2	0.1	670.4
Direct investment abroad	39.3	0.0	0.0	0.0	0.0	39.3
Portfolio investments	6.2	-7.5	0.0	2.1	0.0	0.8
Financial derivatives	-29.7	8.3	10.5	0.0	0.0	-10.9
Other investments	233.1	38.0	0.0	42.0	0.1	313.1
Currency and deposits	124.2	36.3	0.0	24.4	0.0	185.0
Loans	1.2	1.5	0.0	-1.7	0.1	1.1
Monetary authorities	0.0	0.0	0.0	0.0	0.0	0.0
General government	1.2	-0.1	0.0	0.0	0.1	1.1
Banks	0.0	1.7	0.0	-1.7	0.0	0.0
Other sectors	0.0	0.0	0.0	0.0	0.0	0.0
Trade credits	82.0	1.1	0.0	19.2	0.0	102.3
Other assets	25.7	-1.0	0.0	0.0	0.0	24.7
Reserve assets	316.7	8.1	0.2	4.1	0.0	329.1
Monetary gold	28.5	0.0	0.2	0.0	0.0	28.7
SDR	0.6	1.5	0.0	0.0	0.0	2.1
Reserve position in IMF	0.0	0.0	0.0	0.0	0.0	0.0
Foreign exchange	287.6	6.7	0.0	4.1	0.0	298.3
<b>B. Liabilities</b>	2 494.5	51.1	0.0	-23.1	112.3	2 634.7
Direct investment in KR	476.2	5.9	0.0	0.0	15.9	497.9
Portfolio investments	0.2	12.4	0.0	0.0	0.0	12.6
Other investments	2 018.1	32.8	0.0	-23.1	96.4	2 124.2
Currency and deposits	40.9	26.7	0.0	-7.6	0.0	60.0
Loans	1 794.6	-5.0	0.0	-39.3	96.4	1 846.7
Monetary authorities	185.2	-1.7	0.0	-5.7	11.4	189.3
General government	1 399.6	2.1	0.0	-34.7	83.8	1 450.8
Banks	10.0	-4.9	0.0	1.8	0.0	6.9
Other sectors	199.7	-0.5	0.0	-0.7	1.2	199.7
Trade credits	182.5	12.4	0.0	23.7	0.0	218.6
Other liabilities	0.1	-1.2	0.0	0.0	0.0	-1.1
<b>C. Net International Investment Position (A-B)</b>	-1928.9	-4.2	10.7	71.3	-112.2	-1964.3

**Table 41: Developments in Foreign Assets and Liabilities of the Kyrgyz Republic, 1998 - 1 half of 2003***(mil. US dollars)*

	<i>Position 01.01.99</i>	<i>Position 01.01.00</i>	<i>Position 01.01.01</i>	<i>Position 01.01.02</i>	<i>Position 01.01.03</i>	<i>Position 01.07.03</i>
<b>A. Assets</b>	366.1	405.3	479.6	519.4	565.6	670.4
Direct investment abroad	22.6	28.7	33.2	39.3	39.3	39.3
Portfolio investments	0.2	0.2	1.6	3.7	6.2	0.8
Financial derivatives	7.8	7.3	19.5	17.2	-29.7	-10.9
Other investments	146.9	120.3	164.1	174.2	233.1	313.1
Currency and deposits	29.2	30.8	59.7	63.8	124.2	185.0
Loans	0.0	0.0	2.6	2.8	1.2	1.1
Monetary authorities	0.0	0.0	0.0	0.0	0.0	0.0
General government	0.0	0.0	2.4	2.3	1.2	1.1
Banks	0.0	0.0	0.2	0.5	0.0	0.0
Other sectors	0.0	0.0	0.0	0.0	0.0	0.0
Trade credits	105.9	78.5	99.3	105.4	82.0	102.3
Other assets	11.8	11.1	2.6	2.1	25.7	24.7
Reserve assets	188.5	248.8	261.1	285.2	316.7	329.1
Monetary gold	25.2	24.2	22.8	23.0	28.5	28.7
SDR	0.2	5.1	0.7	1.3	0.6	2.1
Reserve position in IMF	0.0	0.0	0.0	0.0	0.0	0.0
Foreign exchange	163.1	219.5	237.6	260.9	287.6	298.3
<b>B. Liabilities</b>	1 962.4	2 127.7	2 138.1	2 125.0	2 494.5	2 634.7
Direct investment in KR	383.3	427.7	438.6	427.3	476.2	497.9
Portfolio investments	0.9	0.8	1.1	2.3	0.2	12.6
Other investments	1 578.2	1 699.2	1 698.4	1 695.3	2 018.1	2 124.2
Currency and deposits	10.8	11.2	0.1	1.1	40.9	60.0
Loans	1 381.0	1 544.9	1 563.4	1 560.9	1 794.6	1 846.7
Monetary authorities	175.1	192.2	191.6	179.3	185.2	189.3
General government	918.2	1 122.2	1 207.5	1 262.1	1 399.6	1 450.8
Banks	8.1	4.9	1.6	4.5	10.0	6.9
Other sectors	279.7	225.6	162.6	114.9	199.7	199.7
Trade credits	186.3	143.1	128.4	131.1	182.5	218.6
Other liabilities	0.0	0.0	6.5	2.2	0.1	-1.1
<b>C. Net International Investment</b>						
<b>Position (A-B)</b>	-1 596.3	-1 722.4	-1 658.6	-1 605.5	-1 928.9	-1 964.3

**Table II.1: Sources of Information Used by the National Bank  
for Compilation of the Balance of Payments of the Kyrgyz Republic**

Items of the Balance of Payments	Sources of information	Contents of information
<b>Current account</b>		
<b>Commodities</b>		
Export of goods (f.o.b.) export	NSC	data on export of goods (f.o.b.) based on SCI data and enterprises
commodities purchased in ports	NSC	data on export of bunker fuel based on reports of enterprises according to form 1-services
nonmonetary gold	NSC	data on export of the nonmonetary gold based on SCI data
Import of goods (f.o.b.) import (c.i.f.)	NSC	data on import of goods (c.i.f.) based on SCI and enterprise data
value adjustment	NSC, NBKR	NBKR estimate of the share of transport and insurance services in import at c.i.f. prices on the basis of survey of enterprises
commodities purchased in ports	NSC	data on import of bunker fuel based on reports of enterprises according to form 1-services
<b>Services</b>		
Transportation services	NSC, CB	data on enterprise reports according to form 1-services and the NBKR assessment of the share of transportation costs in import at c.i.f. prices based on surveys of enterprises; data based on banking statistics on transportation services
Travels	NSC	estimate in compliance with the methodology based on the number of residents arriving (leaving) in the Republic (from the Republic)
Communication services	MTC	data on international communication services according to reporting form 1-services (communication)
Construction	NSC, enterprises	data of enterprises enjoying services of non-resident construction companies according to form 1-INSU and from construction organizations rendering services abroad according to form 1-MSU; data from some large enterprises
Insurance services	NSC, enterprises, CB	NBKR assessment by the share of costs in import at c.i.f. prices on the basis of surveys of enterprises; data from enterprises and banking statistics
Financial services	NBKR, CB	NBKR data on rendering and receiving of financial services; data from banking statistics
Computer and information services	CB	data on information and computer services based on banking statistics
Government services	MFA, CB	data on maintenance expenses of the KR representative offices abroad; data on expenses of foreign representative offices in the KR

**Table II.1: (continued)**

<b>Items of the Balance of Payments</b>	<b>Sources of information</b>	<b>Contents of information</b>
Business services	NSC, CB, enterprises	data on other business technical services, collected from enterprises according to reporting form 8 VES-services; data from some large enterprises
including technical assistance	IMF, MF	estimates on technical assistance being received, data of organizations, which incarnate investment projects
Other services	NSC, CB	data on other services collected from enterprises according to reporting form 8 VES-services; data on other services from banking statistics
<b>Income</b>		
Employee compensation	NSC, CB, enterprises	data of enterprises on non-resident employee compensation, paid to residents going abroad ; data from banking statistics on transfers abroad
Income on investment		
Income on direct investment	NSC, CB	data on direct investment income collected from joint ventures and foreign enterprises according to reporting form 1-SP; data from banking statistics on direct investment income
Income on portfolio investment	NBKR, CB	data on income of nonresidents earned from investment in the KR securities; data from banking statistics on transactions with securities
Other investment income		
Interest on loans		
Monetary authorities	NBKR	data on interest on IMF loans
General government	MF, NBKR, enterprises	data on interest on credits to the public sector; data from enterprises on interest on Government-guaranteed loans
Banks	CB	data of banking statistics on interest on interbank loans
Other sectors	Enterprises	data on interest on loans to the private sector
Other investment income	NBKR, CB, enterprises	data on profit and expenses of the NBKR, relating to international reserve management; incomes of CB and enterprises from assets abroad
<b>Current transfers</b>		
Humanitarian aid	NSC, enterprises	data on rendered humanitarian aid based on SCI data
Technical assistance	IMF	estimates of technical assistance being received
Other grants	NBKR	data on grants in cash
Contributions to international organizations	MF	data on payments made to international and CIS organizations
Workers' remittances	MT&C, CB	data on household postal-telegraph transfers abroad and from abroad according to form 1-services (communications)



**Table II.1: (continued)**

<b>Items of the Balance of Payments</b>	<b>Sources of information</b>	<b>Contents of information</b>
<b>Current and financial account</b>		
<b>Capital transfers</b>		
Commodity grants	NSC	estimate of the share of capital goods in the total volume of commodity grants
Migration related transfers	NSC	NBKR estimate of migrants' transfers based on NSC data on the number of arriving and departing migrants
Forgiveness of debt	Enterprises	data of enterprises on debt service, to non-residents
<b>Direct investments</b>		
Abroad	CB	data from banking statistics on residents' direct investment abroad
To the Kyrgyz Republic	NSC, CB, enterprises	data on direct investment collected from joint ventures and foreign enterprises according to reporting form 1-SP; data from banking statistics on direct investment into the banking sector; data of some large joint ventures
<b>Portfolio investments</b>		
Promissory notes	NBKR, CB, SCSM	data on purchase and redemption of the KR securities by non-residents; data from banking statistics on transactions with securities
<b>Financial derivatives</b>		
	Enterprises	data of enterprises on transactions with financial derivatives
<b>Other investments</b>		
Assets		
Money in cash and deposits		
Banks	CB	data from banking statistics on foreign assets of commercial banks
Other sectors	Enterprises	data on balances of resident enterprises on accounts of banks abroad
Trade loans	NSC	data on mutual settlements of enterprises (debtors' indebtedness)
Other assets		
Monetary authorities	NBKR	data on the NBKR foreign assets not included in reserves
General government	MF	data on payments to international organizations
Liabilities		
Money in cash and deposits		
Banks	CB	data from banking statistics on foreign liabilities of commercial banks
Trade loans	NSC	data on mutual settlements of enterprises (debtors' indebtedness)
Loans		
Monetary authorities	NBKR	data on IMF loans
General government	MF, NBKR, enterprises	data on loans received/repaid by the public sector or under guarantee of the Government
Banks	CB	data from banking statistics on loans received by commercial banks
Other sectors	Enterprises	data on loans received/repaid under no guarantee of the Government
Overdue debts	MF, CB, enterprises	data on overdue payments
Reserve assets	NBKR	data on international reserves and their structure