



**Balance of Payments  
of the  
Kyrgyz Republic**

**Nine months of 2003**

**January 2004**

---

**Bishkek**

EDITORIAL  
BOARD:

Chairman: L. Tsyplakova.  
Board Members: S. Abdybaly tegin,  
G. Dyikanbaeva,  
Z. Chokoev,  
N. Tynaev,  
Y. Bushman.  
Executive Secretary: D. Esenaliev.

The following officers are the key compilers of this publication:  
D. Esenaliev, J. Eraliev, N. Imaralieva, A. Kurmanalieva, M. Satkeeva, E. Baijumanov

Founder – National Bank of the Kyrgyz Republic  
The periodical is registered with the Ministry of Justice of the Kyrgyz Republic  
Registration number 605

© Reprint shall be subject to authorization by the National Bank of the Kyrgyz Republic,  
while in citing references to a source of information shall be mandatory.

Printed by the printing center of the Banking Herald magazine office  
265 Chuy av., Bishkek, 720071  
Tel: (312) 657693, 243801  
Fax: (312) 657693

## ***Balance of Payments of the Kyrgyz Republic***

Balance of Payments of the Kyrgyz Republic prepared by the National Bank of the Kyrgyz Republic. This issue reflects recent external sector trends and contains tables with data on the balance of payments, analytic and standard presentation formats, a pattern of foreign trade, international reserves, external debt, the balance of payments compilation methodology and data base, as well as on the Kyrgyz Republic's international investment position. The NBKR shall reserve the right to revise the balance of payments data for a period of 10 years. Due to changes in a methodology or revisions made by the National Statistical Committee in data applied herein, there could be revisions of the specific data, hence, the period of 10 years shall be considered as subject to revisions. It is published on a quarterly basis – in January, May, July, and October. It is published in three languages: Kyrgyz, Russian, and English.

**The final update date for the present edition** is January 19, 2004

### **Notation:**

- ... data are not available;
- indicators are equal to 0 (zero) or negligible;
- period between years or months (for example, 1994 – 1996 or January - June).

Due to rounding of numbers there could be discrepancies in the numbers following a dot.

Address editorial correspondence to:

tel.: (+996 312) 66-90-57, 66-90-56

fax: (+996 312) 66-90-55

Address: 101 Umetaliev Str., Bishkek, 720040

National Bank of the Kyrgyz Republic,

Economic Department,

Balance of Payments Division.

E-mail: [damir.esenaliev@nbkr.kg](mailto:damir.esenaliev@nbkr.kg)

## **Other publications of the National Bank of the Kyrgyz Republic**

### ***Annual Report of the National Bank of the Kyrgyz Republic***

The annual report is the NBKR's full account of the work during the reporting year. It contains a short description of real sector developments in the economy of the republic and decisions and actions of the National Bank in the monetary sphere. It comprises information on economic development and a monetary policy, financial reporting, general data on the National Bank, and statistical annexes. It is published in three languages: Kyrgyz, Russian, and English.

### ***Bulletin of the National Bank of the Kyrgyz Republic***

The Bulletin of the NBKR contains macroeconomic indicators of the Kyrgyz Republic on the real, financial, and external sectors of the economy, information on prices, and social indicators. Data from departments of the National Bank, as well as from commercial banks, the Ministry of Finance of the Kyrgyz Republic, the National Statistics Committee of the Kyrgyz Republic, and the National Commission for the Securities Market of the Kyrgyz Republic are used for its compilation. It is published on a monthly basis in Kyrgyz, Russian, and English.

### ***Review of inflation on the Kyrgyz Republic***

Review of inflation in the Kyrgyz Republic contains a description of inflation developments by components in the regional context, and, in general, the analysis of inflation factors and the inflation forecast for the forthcoming quarter. It is published on the quarterly basis in Kyrgyz, Russian and English.

### ***Banking System Development Trends***

The purpose of the "Banking System Development Trends" is to study and assess development of the banking system in Kyrgyzstan, as an official intermediary, to identify obstacles to achievement and maintenance of stability, as well as to estimate elements of stability in the banking system of Kyrgyzstan. It is published as of January 1 and July 1 in Kyrgyz and Russian.

### ***Statutory Acts of the National Bank of the Kyrgyz Republic***

The goal of the publication "Statutory Acts of the National Bank of the Kyrgyz Republic" is to officially publish the statutory acts of the National Bank to furnish the commercial banks and the public with the normative documents of the National Bank and official information about performance of the National Bank, as well as to promulgate the banking legislation of the Kyrgyz Republic. Assumptive periodicity of the journal is to publish once a month (as the statutory acts are approved) in Kyrgyz, Russian and English.

### ***Press Release of the National Bank of the Kyrgyz Republic***

Press Release of the NBKR contains a chronicle of events in the National Bank and the financial market basic data. It is published on a weekly basis in Kyrgyz and Russian.

All of the publications are distributed in compliance with the lists approved through the Orders of Chairman of the National Bank of the Kyrgyz Republic and are placed on the web-site of the NBKR: <http://www.nbkr.kg>

## List of Abbreviations

ADB	Asian Development Bank
BOP	Balance of Payments
CB	Commercial Banks
CIF	The price on the frontier of the importing country (cost, insurance, freight), including: a) the f.o.b value of commodities, that is, their value to the frontier of the exporting country, b) transportation costs as well as costs of insurance services from
CIS	Commonwealth of Independent States
CPI	Consumer Price Index
EBRD	European Bank for Reconstruction and Development
EEC	European Economic Community
FOB	The price on the frontier of the exporting country (free on board), including the value of the commodity delivered to the frontier of the exporting country, that is, the producers' price, trade markups, transportation costs to the frontier of the exporting
GDP	Gross Domestic Products
HS	Harmonized system
IMF	International Monetary Fund
SITC	Standard International Trade Classification
ITRS	International Transactions Reporting System
KR	Kyrgyz Republic
MA	Monetary Authorities
MFA	Ministry of Foreign Affairs of the Kyrgyz Republic
MFKR	Ministry of Finance of the Kyrgyz Republic
MTC	Ministry of Transport and Communications of the Kyrgyz Republic
NBKR	National Bank of the Kyrgyz Republic
NEER	Nominal Effective Exchange Rate
Non-CIS	Non-CIS countries
NSC	National Statistics Committee
PED	Public External Debt. PED is a sum of disbursed and outstanding external public loans or other debt instruments of the Kyrgyz Republic to non-resident creditors of the Kyrgyz Republic with definite maturity
PIP	Public Investment Program
REER	Real Effective Exchange Rate
SCI	State Customs Inspectorate under the Ministry of Finance of the Kyrgyz Republic
SDR	Special Drawing Rights
STB	State Treasury Bills
TA	Technical Assistance
TED	Total External Debt is a sum of disbursed and outstanding government and non-government loans of the Kyrgyz Republic borrowed under credit agreement or other debt instruments with definite maturity
WB	World Bank

## Contents

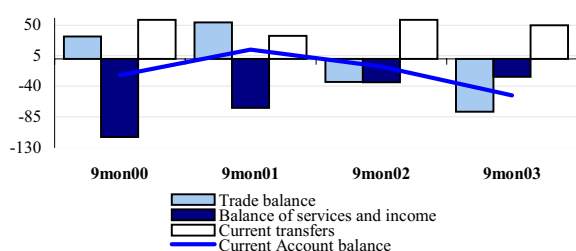
<b>1. Balance of payments: recent developments .....</b>	<b>6</b>
<b>Annex I. Tables and charts .....</b>	<b>13</b>
Table I.1: Balance of payments of the Kyrgyz Republic (standard presentation) .....	14
Table I.2: Structure of Export by the HS sections .....	22
Table I.3: Structure of Export by the SITC sections .....	22
Table I.4: Structure of Import by the HS sections .....	23
Table I.5: Structure of Import by the SITC sections .....	23
Table I.6: Functional structure of Export .....	24
Table I.7: Geographic structure of Export .....	24
Table I.8: Export of goods by individuals .....	24
Table I.9: Functional structure of Import .....	25
Table I.10: Geographic structure of Import .....	25
Table I.11: Import of goods by individuals .....	25
Table I.12: Export of major types of products .....	26
Table I.13: Import of major types of products .....	28
Table I.14: Impact of price and quantity on the volume of export .....	30
Table I.15: Impact of price and quantity on the volume of import .....	31
<b>Export of basic goods by countries .....</b>	<b>32</b>
Table I.16: Export of goods to Russia .....	32
Table I.17: Export of goods to Kazakhstan .....	33
Table I.18: Export of goods to Uzbekistan .....	34
Table I.19: Export of goods to Belarus .....	35
Table I.20: Export of goods to Switzerland .....	35
Table I.21: Export of goods to China .....	36
Table I.22: Export of goods to USA .....	36
Table I.23: Export of goods to Turkey .....	37
Table I.24: Export of goods to Germany .....	38
Table I.25: Export of goods to United Kingdom .....	38
<b>Import of basic goods by countries .....</b>	<b>39</b>
Table I.26: Import of goods from Russia .....	39
Table I.27: Import of goods from Kazakhstan .....	40
Table I.28: Import of goods from Uzbekistan .....	41
Table I.29: Import of goods from Belarus .....	42
Table I.30: Import of goods from China .....	43
Table I.31: Import of goods from the USA .....	44
Table I.32: Import of goods from Germany .....	45
Table I.33: Import of goods from Turkey .....	46
Chart I.1 Exchange rate and the real effective exchange rate index .....	47
Table I.34: Real and Nominal Effective Exchange Rate Indices .....	48
Table I.35: Geographic structure of foreign direct investments in Kyrgyz Republic .....	50
Table I.36: Sectorial structure of foreign direct investments in Kyrgyz Republic .....	50
Table I.37: International reserves (end of period) .....	51
Table I.38: External Debt of the Kyrgyz Republic .....	51
Table I.39: Structure of the external Debt of the Kyrgyz Republic by creditors .....	52
Table I.40: Balance of International Investment Position of the Kyrgyz Republic .....	53
Table I.41: Developments in Foreign Assets and Liabilities of the Kyrgyz Republic .....	54
<b>Annex II.</b>	
Table II.1: Sources of Information used by the National Bank for Compilation of the Balance of Payments of the Kyrgyz Republic .....	55

## Balance of Payments: Recent Developments

The **balance of payments** for nine months of 2003 developed as positive of US\$ 5.3 million.

The **current account** of the balance of payments of the Kyrgyz Republic showed a deficit for the said period equal to US\$ 53.4 million or 3.9 percent of GDP. As against the comparable period of 2002 (the base period) the current account deficit increased by US\$ 42.5 million in absolute terms. Export of goods and services increased by 5.6 percent, and import - by 13.6 percent.

**Chart 1: Current account**  
(in millions of US dollars)



The **deficit of trade balance**, according to a technique of compilation of the balance of payments, is estimated at US\$ 77.5 million, that is 2.3 times more than the external deficit of the similar period of 2002 (US\$ 34 million).

**Table 1: Trade balance of the Kyrgyz Republic**  
(in millions of US dollars)

	9 mon.00	9 mon.01	9 mon.02	9 mon.03
Trade balance	33.4	53.5	-34.0	-77.5
Trade turnover (f. o. b)	743.1	660.6	751.2	835.2
Growth rate (in percent)	0.4	-11.1	13.7	11.2

In comparison with 9 months of 2002, trading conditions of the republic improved in the accounting period - average export prices grew against a background of an import price collapse.

**Export of goods** at FOB prices for 9 months of 2003 made US\$ 378.8 million, having exceeded export in the comparable period of 2002 by 5.6 percent. The export prices increased by 4.6 percent and physical deliveries - by 4.3 percent<sup>1</sup>.

Growth of the world prices for gold was the primary factor of ongoing positive developments in the total volume of export. With growth of physical

deliveries by 10 percent, export of gold made US\$168 million in terms of value, that is by 39 percent more than export in the base period. Excluding gold, export decreased by 11 percent caused by mainly a falldown in the volumes of export of hide and cotton. Export of cotton in physical terms was halved (from 34.8 thousand tons to 18 thousand tons) as assigned to poor harvest of the last year and low stocks of cotton this year. The reduction of export of hide is, most likely, connected to the price factor, because if for 9 months of 2002 the average export price was US\$ 941 for 1 ton, in the accounting period the export prices decreased to US\$ 585, or by 38 percent. The physical deliveries of electricity grew by 11 percent, however, the value of export decreased by 31 percent.

**Table 2: Export of goods of the Kyrgyz Republic**  
(in millions of US dollars)

	9 mon.00	9 mon.01	9 mon.02	9 mon.03
Export (f. o. b)	388.3	357.0	358.6	378.8
Growth rate (in percent)	9.7	-8.0	0.4	5.6
CIS	173.8	139.3	117.3	127.1
Growth rate (in percent)	13	-20	-16	8
non-CIS	190.9	169.7	220.1	267.1
Growth rate (in percent)	7	-11	30	21

As a whole, a commodity composition of export shows a bias toward the goods with a high share of the value added. The share of raw material decreased from 27 to 13 percent, while the share of intermediate goods grew from 39 to 53 percent. Growth of the share of intermediate goods, excluding gold, resulted from an increase in export of glass and other construction materials. Export of consumer goods increased by 12 percent, with growth caused by the considerably increased volumes of food products (by 56 percent).

The share of export to the CIS countries did not practically change and was 33.8 percent of the total volume. The share of export to Russia remained constant - 14.8 percent of total exports while rates of growth of export to Kazakhstan and Tajikistan were impressive, 49 and 133 percent, accordingly. Thus, the share of export to Kazakhstan increased to 11 percent, and the share of export to Tajikistan grew to 3.2 percent. Export to the United Arab Emirates grew to US\$ 119.8 million that forwarded this country in rank of the main export market of Kyrgyzstan (32 percent of the total volume of export). Switzerland (13 percent), Canada (5,8 percent) and China (4,9 percent) were among other non-CIS countries where large volumes of export were directed.

Growth of physical deliveries was a determinative reason for the increase in **import of goods** in the accounting period, which made US\$

<sup>1</sup> The factorial analysis covers 92 and 90 percent of export and import, accordingly.

456.3 million at FOB prices exceeding import in the base period by 16 percent.

**Table 3: Import of goods of the Kyrgyz Republic**  
(in millions of US dollars)

	9 mon.00	9 mon.01	9 mon.02	9 mon.03
Import (f. o. b)	354.9	303.5	392.6	456.3
Growth rate (in percent)	-8	-14	29	16
CIS	190.9	169.7	220.1	267.1
Growth rate (in percent)	7	-11	30	21
non-CIS	164.0	133.8	172.5	189.2
Growth rate (in percent)	-21	-18	29	10

The import prices decreased on the average by 5 percent and the physical volume grew by 21 percent.

Thus, together with growth of export prices one could state an improvement in the trading conditions of Kyrgyzstan, caused, on the part of export, by growth of the world price for gold and, on the part of import, by reorientation of import to the cheap markets, as well as expansionary actions on import of goods.

The highest rate of growth of import in absolute terms was noted with respect to a group of consumer goods, which made US\$165 million and it is by US\$ 29 million more than in the base period. In a pattern of import under this category, the high rates of growth were registered with the food products, which grew from US\$ 91 to 110 million that is equivalent to 23 percent of the total volume of import. Growth of goods for consumption was promoted, in particular, by the increase in real disposable income of the population by 4.8 percent.

Growth of import of energy products made 10 percent, having thus reached US\$ 117.4 million as being determined by a buildup of import of mineral oil and coal coupled with the reduction of import of gas and electricity. The physical deliveries of mineral oil grew by 28 percent, that caused, coupled with growth of average prices by 6 percent during the period under review, the increase in import of this group to US\$ 82.3 million (or by 36 percent). Partially, growth of the physical deliveries of mineral oil is connected to a decrease in excise taxes in the 2nd quarter of 2003 and this promoted the increase in the volume of officially imported mineral oil. The increase in the prices for coal by 83 percent was the primary factor of growth of the value of import with respect to this item by 72 percent, to US\$13.3 million. Import of natural gas decreased by third, reflecting the low volumes of export of electricity to Uzbekistan in 2002 and for nine months of 2003.

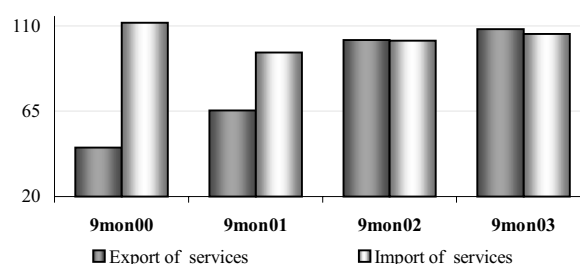
Import of investment and intermediate goods increased by 37 and 18 percent, accordingly, that was

stimulated to a greater degree by real growth of industrial production by 14 percent, as well as by the increase in an inflow of direct foreign investments to the republic.

Import from Russia grew by one and a half. Growth was also registered with respect to all categories of goods. The increase of import from Kazakhstan by 30 percent was caused by mainly growth of import of energy resources. Due to growth of import from these countries, the share of the CIS countries increased from 54.4 percent to 57 percent. Growth was registered in import by 14, 36 and 63 percent with respect to such nonCIS countries, as China, Germany and Turkey, accordingly, while the reduction of the deliveries was observed with respect to the USA (19 percent).

**The balance of services** for nine months of 2003 developed as positive of US\$ 2.6 million, while in the similar period of 2002 it was negative - US\$1.9 million. In comparison with the base period, the volumes of export and import of services grew by 6 and 4 percent, accordingly.

**Chart 2: Balance of international services**  
(in millions of US dollars)



Export of services in the accounting period grew by US\$ 6 million and made US\$ 108.4 million. The transport services were rendered to nonresidents in the amount of US\$ 30.7 million, i.e., by 6 percent higher than the parameter of the base period, thereby reflecting intensification of trade relations with the CIS countries. Export of services under the item "Trips" increased by 19 percent and was US\$ 30.8 million being fully achieved by granting services to the residents of the CIS countries. Export of business and governmental services with the large share in export (14 and 11.5 percent of the total volume), remained practically at a level of the base period.

Import of services grew from US\$ 102.2 million in the base period to US\$ 105.8 million and was ensured by the increase in insurance and business services. Import of transport services, the basic item

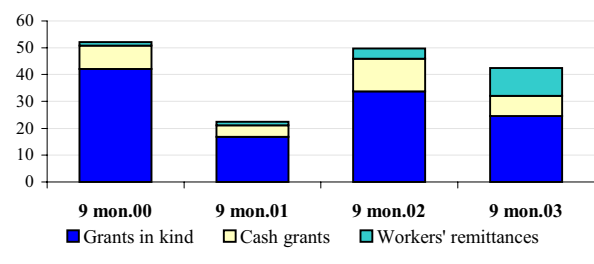
import of services, was kept at the level of the compared period, having made US\$ 39.2 million (37 percent of total imports of services). The components of this position gave rise to the pipeline transport services, with the air transport services decreasing. Expenses of residents under the item "Trips" decreased by 3 percent for 9 months of 2003 and totaled US\$ 7.9 million. According to the estimated data, the volume of technical assistance received by Kyrgyzstan made US\$ 15.1 million that is less by 4 percent in comparison with the similar period of the previous year. The volume of import of insurance services, whose share was 9 percent of the total volume of imported services, grew by US\$ 4 million. Import of business services grew also essentially - from US\$ 8.8 million to US\$ 16.1 million caused by intensified transactions with the non-CIS countries.

The negative balance under the item "**Income**" decreased by 18 percent to US\$ 28.5 million. Almost all of the components of this item showed the decrease in income payable, while income receivable grew. Interest payments on public external debt totaled US\$ 14.4 million according to a debt service schedule. Income of direct foreign investors decreased from US\$ 10.8 million to US\$ 7.9 million, reflecting smaller sizes of reinvested income and interest payments to direct investors.

The balance under the item "Compensation of Employees" developed traditionally as negative of US\$ 7.9 million and it is by 7.5 percent more than the parameter of the base period.

**Current transfers** totaled US\$ 49.9 million as against US\$ 57.5 million in the base period. An outstanding feature of development of this item in the accounting period was the reduction in commodity grants given by the non-residents to the private sector by US\$ 9 million and monetary grants to the public sector by US\$ 4.7 million, with the net inflow on remittances of workers from abroad 2.6 times (Chart 3).

**Chart 3: Current transfers**  
(in millions of US dollars)

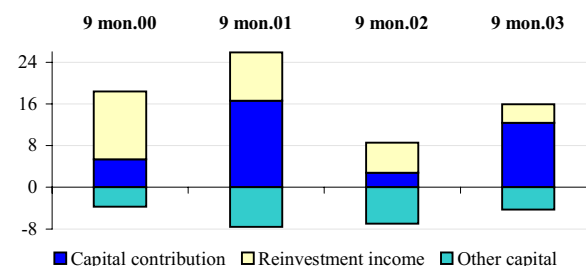


The balance of **the capital and financial account** developed in the accounting period as negative of US\$ 9.8 million, being largely caused by an outflow of funds on short-term operations of commercial banks.

The balance under the item "Capital Transfers" developed traditionally as negative of US\$ 14.9 million due to the persisting outflow of migrants. Nevertheless, the downward tendency is noted in the number of citizens leaving the republic. It led to the decrease in the transfers of migrants from US\$ 28 million in the base period to US\$ 21 million in the period under review.

The net **direct foreign investments** grew from US\$ 1.6 million to US\$ 11.6 million in the accounting period. The main source of their buildup was that of investments in capital of enterprises totaling US\$12.4 million. Growth of direct foreign investments falls on Turkey, China and Kazakhstan - the basic trading partners of Kyrgyzstan. Reinvested income decreased by almost 40 percent to US\$3.5 million. The net outflow of funds on the other direct investments, which reflects the change in liabilities of enterprises, decreased from US\$ 7 to 4.3 million that testifies to insignificant payments on the account of amortization of external debt to the investors (Chart 4).

**Chart 4: Direct investment**  
(in millions of US dollars)



The maximal volumes of inflows of investments were registered with educational institutions, industry and the public health sphere.

The balance of **portfolio investments** in the period under review developed as positive of US\$ 24.3 million, as against the base period, when the outflow of portfolio investments was registered at US\$ 6.4 million. This change of flows is caused by the increase in the liabilities, i.e. growth of investments in capital of enterprises by the portfolio investors by US\$ 16.2 million, and, on the other hand - by the reduction of assets of Kyrgyz banks in debt instruments in the amount of US\$ 8.1 million.



The positive price developments in gold made the negative balance on **financial derivatives** expand to US\$ 12 million.

The balance of **other investments** developed as negative of US\$ 18.8 million as against positive US\$ 58.9 million in the base period. The short-term flows of capital played the determinative role in formation of this item in the period under review. For instance, turnovers under the item "Currency and Deposits" sharply increased, speaking thus for the more active intermediary operations of banks.

The liabilities on the long-term flows increased either: under the item "Credits" the public sector liabilities grew by US\$35 million, whereas the private sector liabilities - by US\$ 4.8 million. US\$ 50.8 million was spent as part of foreign financing of PIP and in terms of percentage to GDP it makes 3.7 percent (4.4 percent in the base period).

If creditor indebtedness of residents for 9 months of 2003 did not change in fact, debtor indebtedness grew by US\$11.3 million.

The **overall total balance of payments** developed as positive of US\$ 5.3 million (including errors and omissions). As a result, the volume of

international reserves grew by US\$ 34.3 million and totaled US\$ 360.7 million at the end of September 2003. This volume of reserves was sufficient for financing 5.9 months of current import of goods and services.

The additional source of financing of operations in the balance of payments were the funds of US\$ 20.7 million classified as "Exceptional Financing" that should have been paid, but were restructured as part of the Paris Club arrangements with creditors.

The item "**Errors and Omissions**" developed as positive of US\$ 68.5 million and it is equal to 6.5 percent of the turnover of goods and services. The positive balance of this item for the recent three years is likely to reflect under-accounting of export of goods and services and the inflow of transfers and capital to the republic.

The size of **total external debt** of the republic as of October 1, 2003, made US\$1911.8 million, of which 88.6 percent is the share of public sector external loans.

The **balance of the international investment position of the Kyrgyz Republic** developed as negative of US\$ 1800.3 million that testifies to excess of external liabilities of the republic over its foreign assets.

**Table 1. Balance of Payments of the Kyrgyz Republic**  
**(analytic presentation)**  
*(in millions of US dollars)*

	1999	2000	2001	2002	2002	2003
					9 mon.	9 mon.
<b>Current Account</b>	<b>-184.0</b>	<b>-79.5</b>	<b>-18.9</b>	<b>-34.6</b>	<b>-10.9</b>	<b>-53.4</b>
Goods and services	-178.0	-82.9	-4.5	-61.1	-33.6	-74.9
Trade balance	-88.6	4.0	39.9	-54.0	-34.0	-77.5
Exports (f. o. b)	462.6	510.9	480.3	498.1	358.6	378.8
CIS	191.5	213.7	172.2	170.3	117.3	127.1
Non-CIS countries	271.0	297.2	308.0	327.7	241.3	251.7
Imports (f. o. b)	551.1	506.9	440.4	552.1	392.6	456.3
CIS	248.7	279.7	250.0	311.7	220.1	267.1
Non-CIS countries	302.4	227.2	190.3	240.3	172.5	189.2
Balance of services	-89.4	-86.9	-44.4	-7.1	0.4	2.6
Rendered services	64.9	61.8	80.3	138.4	102.6	108.4
Received services	-154.3	-148.8	-124.7	-145.5	-102.2	-105.8
Income	-74.0	-83.9	-65.5	-59.7	-34.8	-28.5
Direct investment income	-4.8	-39.1	-27.4	-17.3	-10.8	-7.9
Portfolio investment income	-0.4	0.0	-0.1	0.3	0.2	0.3
Other investment income	-57.3	-34.5	-27.7	-31.2	-16.3	-12.4
Interest in loans (schedule)	-67.3	-51.3	-39.4	-32.3	-19.4	-15.7
Other investment income	10.0	16.8	11.6	1.1	3.1	3.3
Compensation of employees	-11.5	-10.3	-10.3	-11.4	-7.9	-8.5
Current transfers	68.0	87.4	51.1	86.1	57.5	49.9
<b>Capital and financial account</b>	<b>205.4</b>	<b>53.0</b>	<b>-0.4</b>	<b>56.7</b>	<b>28.6</b>	<b>-9.8</b>
Capital account	-15.2	-11.3	-32.0	-27.9	-21.2	-14.9
Capital transfers	-15.2	-11.3	-32.0	-27.9	-21.2	-14.9
Financial account	220.6	64.3	31.6	84.6	49.8	5.2
Direct investment in the KR	38.4	-6.9	-1.1	4.8	1.6	11.6
Portfolio investment	-0.1	-1.3	1.2	-12.0	-6.4	24.3
Financial derivatives	26.4	25.8	17.6	-5.1	-4.3	-12.0
Other investment	156.0	46.7	14.0	97.0	58.9	-18.8
Assets (- accretion)	-0.7	-27.3	-4.0	21.5	24.3	-107.3
Banks	-1.4	-1.6	-16.5	-42.3	-26.2	-72.1
Other assets	0.7	-25.8	12.5	63.8	50.6	-35.2
Liabilities (+ accretion)	156.7	74.0	17.9	75.5	34.6	88.5
Banks	-2.8	-0.3	3.9	32.7	18.4	50.3
Loans	133.3	40.6	17.4	32.2	3.6	39.8
General government	176.8	92.9	67.2	50.8	22.2	35.0
Disbursement	188.1	127.4	110.2	88.1	52.4	60.3
Amortization (schedule)	-11.2	-34.5	-43.1	-37.3	-30.2	-25.3
Private sector	-43.5	-52.3	-49.8	-18.6	-18.6	4.8
Disbursement	8.6	3.9	4.3	1.9	1.9	5.4
Amortization (schedule)	-52.1	-56.2	-54.1	-20.5	-20.5	-0.6
Other liabilities	26.2	33.8	-3.4	10.6	12.6	-1.6
<b>Net errors and omissions</b>	<b>-3.4</b>	<b>10.3</b>	<b>18.6</b>	<b>6.8</b>	<b>-3.2</b>	<b>68.5</b>
<b>Overall balance</b>	<b>18.1</b>	<b>-16.2</b>	<b>-0.7</b>	<b>28.9</b>	<b>14.4</b>	<b>5.3</b>
<b>Financing</b>	<b>-18.1</b>	<b>16.2</b>	<b>0.7</b>	<b>-28.9</b>	<b>-14.4</b>	<b>-5.3</b>
NBKR reserves	-61.2	-21.2	-16.3	-43.8	-27.2	-34.3
IMF loans	19.5	7.3	-2.1	-6.0	-0.2	8.2
Exceptional financing	23.7	30.1	19.1	20.9	13.0	20.8
Other financing	0.0	—	—	—	—	—

2002				2003			
I	II	III	IV	I	II	III	
<b>-5.6</b>	<b>-1.4</b>	<b>-3.9</b>	<b>-23.7</b>	<b>12.9</b>	<b>-46.0</b>	<b>-20.4</b>	<b>Current Account</b>
-11.9	0.0	-21.7	-27.5	2.5	-43.4	-33.9	Goods and services
-10.6	0.6	-24.0	-20.0	3.4	-41.2	-39.7	Trade balance
116.9	125.0	116.7	139.5	121.3	115.4	142.2	Exports (f. o. b)
34.5	37.0	45.9	53.1	39.8	38.7	48.6	CIS
82.5	88.0	70.8	86.4	81.5	76.7	93.6	Non-CIS countries
127.5	124.4	140.7	159.4	117.9	156.6	181.9	Imports (f. o. b)
76.0	69.0	75.1	91.7	64.3	92.0	110.8	CIS
51.5	55.4	65.6	67.8	53.6	64.5	71.1	Non-CIS countries
-1.3	-0.5	2.3	-7.5	-0.9	-2.3	5.8	Balance of services
27.8	30.9	43.9	35.8	28.4	33.8	46.2	Rendered services
-29.1	-31.5	-41.6	-43.3	-29.3	-36.1	-40.5	Received services
-10.0	-16.0	-8.9	-24.8	-6.3	-16.1	-6.1	Income
-3.9	-4.7	-2.3	-6.5	-2.0	-4.8	-1.1	Direct investment income
0.1	—	0.1	0.1	0.2	0.1	0.0	Portfolio investment income
-3.4	-8.9	-4.0	-14.8	-1.5	-8.8	-2.1	Other investment income
-4.2	-10.8	-4.4	-12.9	-2.4	-10.4	-2.8	Interest in loans (schedule)
0.8	1.9	0.4	-2.0	0.9	1.7	0.7	Other investment income
-2.8	-2.5	-2.7	-3.5	-3.0	-2.7	-2.9	Compensation of employees
16.3	14.7	26.6	28.6	16.6	13.6	19.6	Current transfers
<b>29.4</b>	<b>-1.6</b>	<b>0.8</b>	<b>28.1</b>	<b>0.8</b>	<b>-4.7</b>	<b>-5.9</b>	<b>Capital and financial account</b>
-4.1	-5.0	-12.1	-6.7	-0.8	-6.0	-8.2	Capital account
-4.1	-5.0	-12.1	-6.7	-0.8	-6.0	-8.2	Capital transfers
33.5	3.4	12.8	34.8	1.6	1.2	2.3	Financial account
4.7	-12.2	9.0	3.2	4.2	1.5	5.9	Direct investment in the KR
2.2	0.8	-9.5	-5.6	11.1	1.3	11.9	Portfolio investment
0.1	-0.4	-4.0	-0.8	-5.3	-3.0	-3.7	Financial derivatives
26.5	15.1	17.3	38.1	-8.5	1.5	-11.8	Other investment
5.1	48.3	-29.0	-2.9	-27.3	-6.9	-73.1	Assets (- accretion)
-3.8	-3.0	-19.4	-16.1	-4.9	-25.0	-42.2	Banks
8.9	51.3	-9.6	13.2	-22.4	18.1	-30.9	Other assets
21.4	-33.1	46.3	41.0	18.8	8.4	61.3	Liabilities (+ accretion)
-0.1	8.9	9.6	14.3	-0.4	22.1	28.5	Banks
12.7	-28.0	18.9	28.6	7.3	1.4	31.1	Loans
13.2	-9.6	18.6	28.6	7.2	1.6	26.2	General government
14.5	17.9	20.1	35.7	13.9	14.7	31.7	Disbursement
-1.3	-27.5	-1.5	-7.1	-6.7	-13.1	-5.5	Amortization (schedule)
-0.5	-18.4	0.3	0.0	0.1	-0.2	4.9	Private sector
0.2	0.1	1.5	0.1	0.2	—	5.3	Disbursement
-0.7	-18.5	-1.2	-0.1	0.0	-0.2	-0.4	Amortization (schedule)
8.8	-14.0	17.8	-1.9	11.8	-15.1	1.8	Other liabilities
<b>-24.0</b>	<b>0.0</b>	<b>20.8</b>	<b>10.0</b>	<b>-14.8</b>	<b>42.3</b>	<b>41.0</b>	<b>Net errors and omissions</b>
<b>-0.3</b>	<b>-3.0</b>	<b>17.7</b>	<b>14.5</b>	<b>-1.2</b>	<b>-8.3</b>	<b>14.8</b>	<b>Overall balance</b>
<b>0.3</b>	<b>3.0</b>	<b>-17.7</b>	<b>-14.5</b>	<b>1.2</b>	<b>8.3</b>	<b>-14.8</b>	<b>Financing</b>
3.4	0.7	-31.3	-16.6	-10.5	2.4	-26.1	NBKR reserves
-4.9	-5.6	10.3	-5.8	7.1	-8.7	9.8	IMF loans
1.7	7.9	3.4	7.9	4.6	14.7	1.5	Exceptional financing
—	—	—	—	—	—	—	Other financing



## **Annex I. Tables and charts**

---

**Table I.1: Balance of Payments of the Kyrgyz Republic**  
**(standard presentation)**  
*(in millions of US dollars)*

	1999	2000	2001	2002	2002	2003
					9 mon.	9 mon.
<b>Current Account</b>	<b>-184.0</b>	<b>-79.5</b>	<b>-18.9</b>	<b>-34.6</b>	<b>-10.9</b>	<b>-53.4</b>
Goods and services	-178.0	-82.9	-4.5	-61.1	-33.6	-74.9
Goods	-88.6	4.0	39.9	-54.0	-34.0	-77.5
Export of goods (f.o.b.)	462.6	510.9	480.3	498.1	358.6	378.8
exports	270.1	309.1	251.6	333.5	236.4	210.2
goods procured in ports	0.6	0.1	—	—	—	—
nonmonetary gold	183.1	195.3	224.6	162.8	120.8	168.0
adjustment to coverage	8.7	6.4	4.1	1.8	1.4	0.7
Import of goods (f.o.b.)	-551.1	-506.9	-440.4	-552.1	-392.6	-456.3
imports (c.i.f.)	-598.1	-553.1	-466.3	-583.9	-414.6	-484.5
valuation adjustment	62.2	51.7	31.2	37.6	27.0	34.7
goods procured in ports	-1.6	-1.6	-0.9	-2.9	-2.3	-2.3
adjustment to coverage	-13.5	-3.9	-4.3	-2.9	-2.7	-4.2
Services	-89.4	-86.9	-44.4	-7.1	0.4	2.6
exports	64.9	61.8	80.3	138.4	102.6	108.4
imports	-154.3	-148.8	-124.7	-145.5	-102.2	-105.8
Transportation services	-57.8	-53.3	-29.4	-16.5	-10.4	-8.5
exports	19.9	16.6	20.4	37.5	29.0	30.7
imports	-77.7	-69.9	-49.8	-54.0	-39.3	-39.2
Railroad transport	-32.5	-25.4	-18.3	-21.6	-15.8	-14.7
exports	2.8	4.5	6.5	9.4	7.0	8.2
imports	-35.3	-29.9	-24.8	-30.9	-22.8	-22.9
Air transport	1.1	-8.1	-4.4	10.0	8.2	10.8
exports	9.1	7.7	9.2	22.7	17.9	19.0
imports	-8.0	-15.8	-13.6	-12.8	-9.7	-8.2
Road transport	-12.6	-11.6	-5.5	-4.9	-3.3	-4.5
exports	2.5	1.2	2.3	2.9	2.2	1.2
imports	-15.1	-12.8	-7.8	-7.8	-5.5	-5.7
Other types of transport	-13.8	-8.2	-1.2	—	0.5	-0.1
exports	5.5	3.2	2.3	2.5	1.8	2.3
imports	-19.4	-11.4	-3.5	-2.5	-1.3	-2.4
Travels	3.4	-0.4	12.5	25.8	17.8	23.0
exports	14.1	15.3	24.4	35.7	26.0	30.8
imports	-10.7	-15.6	-11.9	-9.9	-8.2	-7.9
Business	1.5	-1.7	4.2	10.1	6.8	9.1
exports	6.6	6.6	10.5	15.3	11.2	13.3
imports	-5.1	-8.3	-6.3	-5.2	-4.3	-4.2
Personal	1.9	1.4	8.3	15.7	11.0	13.9
exports	7.5	8.7	13.9	20.3	14.8	17.6
imports	-5.6	-7.3	-5.6	-4.6	-3.8	-3.7
Communication services	2.2	2.3	0.8	1.9	1.2	-0.5
exports	10.3	9.3	8.7	8.9	6.3	6.1
imports	-8.2	-7.0	-7.9	-7.0	-5.1	-6.6
Construction services	0.7	-2.8	-2.2	-3.6	-2.1	4.0
exports	3.9	3.1	4.5	4.9	3.8	4.0
imports	-3.2	-6.0	-6.7	-8.5	-5.9	—
Insurance services	-9.4	-7.5	-7.2	-8.6	-6.0	-9.6
exports	0.7	0.5	0.2	0.3	0.3	0.1
imports	-10.1	-8.0	-7.4	-8.9	-6.2	-9.7

2002				2003			
I	II	III	IV	I	II	III	
-5.6	-1.4	-3.9	-23.7	12.9	-46.0	-20.4	<b>Current Account</b>
-11.9	—	-21.7	-27.5	2.5	-43.4	-33.9	Goods and services
-10.6	0.6	-24.0	-20.0	3.4	-41.2	-39.7	Goods
116.9	125.0	116.7	139.5	121.3	115.4	142.2	Export of goods (f.o.b.)
70.9	78.8	86.7	97.1	67.5	68.7	73.9	exports
—	—	—	—	—	—	—	goods procured in ports
45.3	45.8	29.6	42.0	53.6	46.4	68.1	nonmonetary gold
0.7	0.3	0.4	0.4	0.2	0.3	0.2	adjustment to coverage
-127.5	-124.4	-140.7	-159.4	-117.9	-156.6	-181.9	Import of goods (f.o.b.)
-134.4	-130.8	-149.4	-169.2	-125.5	-167.0	-192.0	imports (c.i.f.)
8.2	8.2	10.6	10.6	8.6	12.4	13.7	valuation adjustment
-0.2	-0.8	-1.3	-0.6	-0.4	-0.9	-1.0	goods procured in ports
-1.1	-1.0	-0.6	-0.2	-0.5	-1.1	-2.5	adjustment to coverage
-1.3	-0.5	2.3	-7.5	-0.9	-2.3	5.8	Services
27.8	30.9	43.9	35.8	28.4	33.8	46.2	exports
-29.1	-31.5	-41.6	-43.3	-29.3	-36.1	-40.5	imports
-4.9	-2.2	-3.3	-6.1	-2.7	-1.2	-4.6	Transportation services
8.0	9.6	11.4	8.5	8.0	10.7	12.0	exports
-12.8	-11.8	-14.7	-14.6	-10.8	-11.8	-16.6	imports
-5.1	-4.8	-5.9	-5.8	-3.7	-3.7	-7.3	Railroad transport
1.7	2.4	2.9	2.3	2.3	3.2	2.7	exports
-6.8	-7.3	-8.8	-8.1	-5.9	-6.9	-10.0	imports
1.4	3.4	3.3	1.8	2.2	3.5	5.1	Air transport
5.2	5.9	6.9	4.8	4.6	6.2	8.2	exports
-3.7	-2.5	-3.5	-3.1	-2.4	-2.8	-3.1	imports
-1.2	-1.1	-1.0	-1.6	-1.0	-1.1	-2.4	Road transport
0.5	0.6	1.1	0.6	0.4	0.5	0.3	exports
-1.7	-1.7	-2.2	-2.3	-1.4	-1.6	-2.7	imports
—	0.3	0.3	-0.5	-0.3	0.2	—	Other types of transport
0.7	0.6	0.5	0.7	0.8	0.7	0.8	exports
-0.7	-0.3	-0.3	-1.2	-1.1	-0.6	-0.8	imports
2.9	4.5	10.4	8.0	3.6	6.3	13.1	Travels
5.8	6.7	13.5	9.7	5.4	8.9	16.6	exports
-2.8	-2.2	-3.1	-1.7	-1.9	-2.6	-3.5	imports
1.0	1.7	4.2	3.3	1.3	2.4	5.3	Business
2.5	2.9	5.8	4.2	2.3	3.8	7.1	exports
-1.5	-1.2	-1.6	-0.9	-1.0	-1.4	-1.8	imports
1.9	2.8	6.2	4.7	2.2	3.8	7.8	Personal
3.3	3.8	7.7	5.5	3.1	5.1	9.4	exports
-1.3	-1.0	-1.5	-0.8	-0.9	-1.2	-1.6	imports
0.2	0.5	0.6	0.7	0.2	0.4	-1.0	Communication services
1.9	2.1	2.3	2.5	2.0	2.1	1.9	exports
-1.7	-1.7	-1.8	-1.9	-1.9	-1.7	-3.0	imports
0.9	-1.0	-1.9	-1.6	1.2	1.6	1.2	Construction services
1.3	1.3	1.2	1.1	1.3	1.6	1.2	exports
-0.4	-2.4	-3.1	-2.7	—	—	—	imports
-1.7	-2.0	-2.2	-2.6	-2.4	-3.8	-3.4	Insurance services
—	0.2	—	—	—	0.1	—	exports
-1.7	-2.2	-2.3	-2.6	-2.4	-3.9	-3.5	imports

**Table I.1: (continued)**

	1999	2000	2001	2002	2002	2003
					9 mon.	9 mon.
Financial services	-5.0	-3.2	-2.7	-9.0	-6.1	-2.4
exports	0.3	1.0	0.6	3.6	2.8	0.4
imports	-5.3	-4.2	-3.2	-12.5	-9.0	-2.9
Computer and information services	-0.5	-0.4	-0.5	-1.2	-0.7	-1.3
exports	0.2	0.5	0.5	0.7	0.6	1.2
imports	-0.7	-0.9	-1.0	-1.8	-1.3	-2.4
Government services	1.9	1.0	3.5	16.8	12.9	12.6
exports	4.6	4.9	6.9	20.3	15.1	15.2
imports	-2.7	-3.9	-3.4	-3.5	-2.2	-2.6
Business services	-25.7	-22.3	-20.3	-14.3	-7.5	-14.0
exports	7.2	8.1	10.8	24.7	17.4	17.8
imports	-32.9	-30.4	-31.1	-39.0	-24.8	-31.8
of which Technical assistance	-18.5	-20.4	-21.3	-21.0	-15.7	-15.1
Other services	0.9	-0.5	1.1	1.5	1.2	-0.6
exports	3.6	2.5	3.3	2.0	1.4	2.2
imports	-2.8	-3.0	-2.2	-0.5	-0.2	-2.8
<b>Income</b>	<b>-74.0</b>	<b>-83.9</b>	<b>-65.5</b>	<b>-59.7</b>	<b>-34.8</b>	<b>-28.5</b>
Compensation of employees	-11.5	-10.3	-10.3	-11.4	-7.9	-8.5
Investment income	-62.5	-73.6	-55.2	-48.2	-26.9	-20.0
Direct investments	-4.8	-39.1	-27.4	-17.3	-10.8	-7.9
Distributed profit	-0.9	-1.3	-0.5	-0.1	-0.1	-0.2
Reinvested incomes	-3.9	-8.0	-13.5	-9.0	-5.8	-3.5
Income from debt (interests)	—	-29.8	-13.5	-8.2	-4.9	-4.1
Portfolio investments	-0.4	—	-0.1	0.3	0.2	0.3
Other investments	-57.3	-34.5	-27.7	-31.2	-16.3	-12.4
Interest on loans (schedule)	-67.7	-50.0	-39.0	-36.1	-19.2	-13.9
Monetary authorities	-2.2	-2.0	-1.6	-1.2	-0.7	-0.6
General government	-33.5	-29.7	-25.8	-26.9	-15.6	-13.9
Banks	-0.4	1.3	0.4	-3.9	0.2	1.7
Other sectors	-31.7	-19.6	-12.0	-4.3	-3.2	-1.2
Other investment income	10.5	15.5	11.2	5.0	2.9	1.5
Current transfers	68.0	87.4	51.1	86.1	57.5	49.9
General government	67.3	45.5	31.6	49.9	32.7	28.0
Humanitarian assistance	44.1	12.9	8.4	11.6	5.9	6.1
Technical assistance	18.0	20.0	20.0	20.0	15.0	15.0
Contributions to international organizations	-0.7	-1.3	-1.1	-0.7	-0.4	-0.7
Other grants	5.9	13.9	4.3	19.0	12.2	7.5
Other sectors	0.7	41.9	19.6	36.2	24.8	21.9
Workers' remittances	0.7	1.4	1.7	5.9	3.9	10.3
Receipt	—	2.2	3.5	9.5	6.9	15.8
Outflow	—	-0.9	-1.7	-3.6	-3.1	-5.5
Other transfers	—	40.5	17.8	30.4	21.0	11.6
<b>Capital and Financial Account</b>	<b>187.3</b>	<b>69.2</b>	<b>0.4</b>	<b>27.8</b>	<b>14.2</b>	<b>-15.0</b>
Capital account	-15.2	-11.3	-32.0	-27.9	-21.2	-14.9
Capital transfers	-15.2	-11.3	-32.0	-27.9	-21.2	-14.9
General government	6.7	3.0	1.8	7.7	6.3	5.9
Grant in form of goods	6.7	3.0	1.8	7.7	6.3	5.9
Other sectors	-21.9	-14.3	-33.8	-35.6	-27.5	-20.8
Transfers related to migration	-21.9	-27.5	-34.6	-36.6	-28.1	-21.2
Forgiveness of debt	—	6.1	—	—	—	—
Other transfers	—	7.1	0.8	1.0	0.6	0.4



2002				2003			
I	II	III	IV	I	II	III	
-0.7	-1.0	-4.4	-2.8	-0.6	-1.2	-0.6	Financial services
0.1	1.2	1.6	0.7	0.2	0.1	0.1	exports
-0.8	-2.2	-6.0	-3.5	-0.8	-1.3	-0.7	imports
-0.3	-0.5	0.1	-0.5	-0.5	-0.6	-0.2	Computer and information services
—	0.1	0.5	—	0.3	0.2	0.6	exports
-0.3	-0.5	-0.4	-0.6	-0.8	-0.8	-0.8	imports
4.3	3.2	5.4	3.9	3.8	4.1	4.7	Government services
4.8	4.1	6.2	5.2	4.6	4.8	5.8	exports
-0.4	-0.9	-0.8	-1.3	-0.8	-0.7	-1.1	imports
-2.3	-2.3	-2.8	-6.8	-3.5	-7.7	-2.7	Business services
5.7	5.2	6.5	7.4	6.0	4.7	7.1	exports
-8.1	-7.5	-9.3	-14.2	-9.5	-12.4	-9.8	imports
-5.4	-5.2	-5.1	-5.2	-5.1	-5.0	-5.1	of which Technical assistance
0.2	0.4	0.6	0.3	0.1	-0.1	-0.6	Other services
0.2	0.4	0.7	0.6	0.5	0.8	0.9	exports
-0.1	-0.1	-0.1	-0.2	-0.4	-0.8	-1.5	imports
-10.0	-16.0	-8.9	-24.8	-6.3	-16.1	-6.1	Income
-2.8	-2.5	-2.7	-3.5	-3.0	-2.7	-2.9	Compensation of employees
-7.2	-13.6	-6.2	-21.3	-3.3	-13.5	-3.2	Investment income
-3.9	-4.7	-2.3	-6.5	-2.0	-4.8	-1.1	Direct investments
-0.7	0.5	—	—	—	-0.1	-0.1	Distributed profit
-2.6	-1.5	-1.7	-3.2	-1.4	-1.7	-0.4	Reinvested incomes
-0.6	-3.7	-0.6	-3.4	-0.6	-2.9	-0.6	Income from debt (interests)
0.1	—	0.1	0.1	0.2	0.1	—	Portfolio investments
-3.4	-8.9	-4.0	-14.8	-1.5	-8.8	-2.1	Other investments
-4.1	-10.8	-4.4	-16.9	-2.2	-9.3	-2.5	Interest on loans (schedule)
-0.1	-0.5	-0.1	-0.5	—	-0.5	—	Monetary authorities
-2.9	-9.1	-3.6	-11.3	-2.3	-9.1	-2.4	General government
0.1	0.1	—	-4.0	0.2	1.1	0.3	Banks
-1.2	-1.2	-0.8	-1.1	-0.1	-0.8	-0.3	Other sectors
0.7	1.9	0.4	2.1	0.7	0.6	0.3	Other investment income
16.3	14.7	26.6	28.6	16.6	13.6	19.6	Current transfers
12.5	6.7	13.5	17.2	8.3	7.5	12.2	General government
2.5	1.9	1.6	5.7	1.9	2.7	1.6	Humanitarian assistance
5.0	5.0	5.0	5.0	5.0	5.0	5.0	Technical assistance
-0.1	-0.2	-0.1	-0.3	-0.1	-0.2	-0.4	Contributions to international organizations
5.2	—	7.0	6.8	1.5	—	6.0	Other grants
3.8	8.0	13.1	11.4	8.3	6.2	7.5	Other sectors
1.2	0.1	2.6	2.0	1.9	3.6	4.9	Workers' remittances
1.5	2.3	3.1	2.6	2.5	7.5	5.9	Receipt
-0.3	-2.2	-0.6	-0.6	-0.6	-3.9	-1.0	Outflow
2.5	7.9	10.5	9.4	6.4	2.6	2.6	Other transfers
<b>29.7</b>	<b>1.4</b>	<b>-16.9</b>	<b>13.7</b>	<b>2.0</b>	<b>3.6</b>	<b>-20.6</b>	<b>Capital and Financial Account</b>
-4.1	-5.0	-12.1	-6.7	-0.8	-6.0	-8.2	Capital account
-4.1	-5.0	-12.1	-6.7	-0.8	-6.0	-8.2	Capital transfers
1.1	4.8	0.4	1.4	3.8	1.1	1.0	General government
1.1	4.8	0.4	1.4	3.8	1.1	1.0	Grant in form of goods
-5.2	-9.8	-12.5	-8.1	-4.5	-7.1	-9.2	Other sectors
-5.5	-10.0	-12.6	-8.5	-4.6	-7.3	-9.3	Transfers related to migration
—	—	—	—	—	—	—	Forgiveness of debt
0.3	0.2	0.2	0.4	0.1	0.2	0.1	Other transfers

**Table I.1: (continued)**

	1999	2000	2001	2002	2002	2003
					9 mon.	9 mon.
Financial account	202.5	80.5	32.4	55.8	35.4	-0.1
Direct investment	38.4	-6.9	-1.1	4.8	1.6	11.6
Abroad	-6.1	-4.5	-6.1	—	—	—
In the Kyrgyz Republic	44.4	-2.4	5.0	4.8	1.6	11.6
Receipt	—	—	—	115.6	65.5	77.5
Outflow	—	—	—	-110.9	-63.9	-65.9
In the share capital	11.2	17.6	12.3	5.0	2.8	12.4
Receipt	—	—	—	26.1	15.2	16.4
Outflow	—	—	—	-21.2	-12.4	-4.0
Reinvestment income	3.9	8.0	13.5	9.0	5.8	3.5
Other capital	29.4	-28.0	-20.8	-9.2	-7.0	-4.3
Receipt	—	—	—	80.5	44.5	57.6
Outflow	—	—	—	-89.7	-51.5	-61.9
Portfolio investment	-0.1	-1.3	1.2	-12.0	-6.4	24.3
Assets	—	-1.6	1.2	-2.5	3.1	8.1
Debt securities	—	-1.6	1.2	-2.5	3.1	8.1
Liabilities	-0.1	0.3	—	-9.5	-9.5	16.2
In share capital	0.2	0.3	—	-9.5	-9.5	16.2
Debt securities	-0.3	—	—	—	—	—
Financial derivatives	26.4	25.8	17.6	-5.1	-4.3	-12.0
Assets	26.4	25.8	17.6	-5.1	-4.3	-12.0
Other sectors	26.4	25.8	17.6	-5.1	-4.3	-12.0
Other investments	199.1	84.1	31.0	111.9	71.7	10.2
Assets	-0.7	-27.3	-4.0	21.5	24.3	-107.3
Currency and deposits	7.7	-3.0	-1.3	-27.3	-11.5	-96.8
Banks	-1.4	-1.6	-16.5	-42.3	-26.2	-72.1
Other sectors	9.1	-1.5	15.1	15.0	14.7	-24.7
Trade credits	-9.2	-32.8	-2.8	24.6	9.5	-11.3
General government	-6.6	-31.8	-6.6	14.8	5.7	-10.4
Long - term	-4.4	-21.3	-4.4	9.9	3.8	-7.0
Short - term	-2.2	-10.5	-2.2	4.9	1.9	-3.4
Other sectors	-2.5	-1.0	3.8	9.8	3.8	-0.9
Long - term	-1.6	-0.6	2.8	6.6	2.6	1.4
Short - term	-1.0	-0.5	1.0	3.2	1.3	-2.3
Other assets	0.8	8.5	0.2	24.2	26.3	0.7
Monetary authorities	—	8.6	—	23.9	26.1	0.5
General government	0.7	-0.1	0.2	0.3	0.2	0.2
Liabilities	199.8	111.4	34.9	90.5	47.4	117.5
Currency and deposits	0.4	-1.0	1.0	26.0	15.6	54.9
Banks	0.4	-1.0	1.0	26.0	15.6	54.9
Trade credits	26.2	26.0	0.7	12.7	14.3	0.1
General government	47.6	3.9	19.3	7.6	8.6	11.0
Long - term	31.8	2.7	13.3	5.3	5.9	7.6
Short - term	15.8	1.2	6.0	2.4	2.7	3.4
Other sectors	-21.5	22.2	-18.6	5.1	5.7	-11.0
Long - term	-17.2	14.4	-11.9	3.5	3.9	-13.2
Short - term	-4.3	7.7	-6.7	1.6	1.8	2.3
Loans	149.6	48.5	18.2	32.9	6.2	43.4
Disbursement	225.2	152.9	148.5	299.3	239.8	148.3
Monetary authorities	26.8	18.7	14.9	15.4	15.4	29.5
Long - term	—	18.7	14.9	15.4	15.4	29.5
General government	188.1	127.4	110.2	88.1	52.4	60.3
Long - term	—	127.4	110.2	88.1	52.4	60.3
Short - term	—	—	—	—	—	—

2002				2003			
I	II	III	IV	I	II	III	
33.8	6.4	-4.8	20.4	2.7	9.6	-12.5	Financial account
4.7	-12.2	9.0	3.2	4.2	1.5	5.9	Direct investment
—	—	—	—	—	—	—	Abroad
4.7	-12.2	9.0	3.2	4.2	1.5	5.9	In the Kyrgyz Republic
19.2	26.6	19.6	50.1	21.1	22.2	34.2	Receipt
-14.5	-38.8	-10.6	-47.0	-16.8	-20.7	-28.3	Outflow
-4.4	-0.3	7.4	2.2	-1.2	2.9	10.7	In the share capital
3.7	2.3	9.2	11.0	0.3	4.5	11.6	Receipt
-8.0	-2.6	-1.8	-8.8	-1.5	-1.7	-0.9	Outflow
2.6	1.5	1.7	3.2	1.4	1.7	0.4	Reinvestment income
6.5	-13.4	—	-2.2	4.0	-3.1	-5.2	Other capital
13.0	22.8	8.8	36.0	19.4	15.9	22.3	Receipt
-6.5	-36.2	-8.8	-38.2	-15.4	-19.1	-27.4	Outflow
2.2	0.8	-9.5	-5.6	11.1	1.3	11.9	Portfolio investment
2.2	0.8	—	-5.6	6.2	1.3	0.6	Assets
2.2	0.8	—	-5.6	6.2	1.3	0.6	Debt securities
—	—	-9.5	—	4.9	—	11.2	Liabilities
—	—	-9.5	—	4.9	—	11.2	In share capital
—	—	—	—	—	—	—	Debt securities
0.1	-0.4	-4.0	-0.8	-5.3	-3.0	-3.7	Financial derivatives
0.1	-0.4	-4.0	-0.8	-5.3	-3.0	-3.7	Assets
0.1	-0.4	-4.0	-0.8	-5.3	-3.0	-3.7	Other sectors
23.4	17.4	30.9	40.2	3.2	7.5	-0.5	Other investments
5.1	48.3	-29.0	-2.9	-27.3	-6.9	-73.1	Assets
-23.1	24.0	-12.4	-15.8	-16.9	-20.9	-59.0	Currency and deposits
-3.8	-3.0	-19.4	-16.1	-4.9	-25.0	-42.2	Banks
-19.3	26.9	7.0	0.3	-12.0	4.1	-16.8	Other sectors
26.8	-1.1	-16.2	15.0	-10.7	13.4	-14.0	Trade credits
16.1	-0.7	-9.7	9.0	-6.5	5.9	-9.7	General government
10.8	-0.4	-6.5	6.0	-4.4	3.9	-6.5	Long - term
5.3	-0.2	-3.2	3.0	-2.2	1.9	-3.2	Short - term
10.7	-0.4	-6.5	6.0	-4.2	7.6	-4.3	Other sectors
7.2	-0.3	-4.3	4.0	-2.8	6.3	-2.1	Long - term
3.5	-0.1	-2.1	2.0	-1.4	1.3	-2.1	Short - term
1.3	25.4	-0.5	-2.1	0.3	0.5	-0.1	Other assets
1.3	25.4	-0.5	-2.2	0.3	0.5	-0.2	Monetary authorities
0.1	0.1	0.1	0.1	0.1	0.1	0.1	General government
18.3	-30.8	59.9	43.1	30.5	14.3	72.7	Liabilities
1.6	6.8	7.2	10.4	6.0	20.7	28.2	Currency and deposits
1.6	6.8	7.2	10.4	6.0	20.7	28.2	Banks
9.4	-13.4	18.4	-1.6	12.8	-14.9	2.1	Trade credits
5.6	-8.0	11.0	-1.0	11.7	-4.3	3.6	General government
3.9	-5.6	7.6	-0.7	8.1	-2.9	2.5	Long - term
1.7	-2.5	3.4	-0.3	3.6	-1.3	1.1	Short - term
3.7	-5.4	7.3	-0.6	1.1	-10.6	-1.5	Other sectors
2.6	-3.7	5.1	-0.4	-1.3	-9.8	-2.2	Long - term
1.2	-1.7	2.3	-0.2	2.4	-0.9	0.7	Short - term
6.2	-31.5	31.5	26.7	8.1	-5.9	41.2	Loans
51.2	104.6	84.0	59.5	36.1	24.7	87.6	Disbursement
—	—	15.4	—	16.1	—	13.4	Monetary authorities
—	—	15.4	—	16.1	—	13.4	Long - term
14.5	17.9	20.1	35.7	13.9	14.7	31.7	General government
14.5	17.9	20.1	35.7	13.9	14.7	31.7	Long - term
—	—	—	—	—	—	—	Short - term

**Table I.1: (continued)**

	1999	2000	2001	2002	2002	2003
					9 mon.	9 mon.
Banks	1.7	2.9	19.1	193.9	170.1	53.1
Long - term	—	—	—	—	—	—
Short - term	—	—	—	193.9	170.1	53.1
Other sectors	8.6	3.9	4.3	1.9	1.9	5.4
Long - term	—	—	—	1.9	1.9	5.4
Short - term	—	—	—	—	—	—
Amortization (schedule)	-75.6	-104.4	-130.3	-266.4	-233.6	-105.0
Monetary authorities	-7.3	-11.4	-17.0	-21.4	-15.6	-21.3
Long - term	—	—	—	-21.4	-15.6	-21.3
General government	-11.2	-34.5	-43.1	-37.3	-30.2	-25.3
Long - term	—	—	—	-37.3	-30.2	-25.3
Short - term	—	—	—	—	—	—
Banks	-5.0	-2.3	-16.2	-187.2	-167.3	-57.7
Long - term	—	—	—	—	—	—
Short - term	—	—	—	-187.2	-167.3	-57.7
Other sectors	-52.1	-56.2	-54.1	-20.5	-20.5	-0.6
Long - term	—	—	—	-20.5	-20.5	-0.6
Short - term	—	—	—	—	—	—
Arrears	23.7	30.1	19.1	20.9	13.0	20.8
General government	22.4	28.8	15.6	17.3	10.6	19.7
Other sectors	1.3	1.3	3.5	3.6	2.4	1.2
Other liabilities	—	7.8	-4.0	-2.1	-1.7	-1.6
Monetary authorities	—	—	—	—	—	—
Other sectors	—	7.8	-4.0	-2.1	-1.7	-1.6
Reserve assets	-61.2	-21.2	-16.3	-43.8	-27.2	-34.3
Monetary gold	—	—	—	—	—	—
SDR	-4.8	4.3	0.6	—	—	3.6
Foreign exchange	-56.4	-25.5	-16.9	-43.8	-27.2	-37.9
<b>Net errors and omissions</b>	<b>-3.4</b>	<b>10.3</b>	<b>18.6</b>	<b>6.8</b>	<b>-3.2</b>	<b>68.5</b>
<b>Overall Balance</b>	<b>0.0</b>	<b>0.0</b>	<b>0.0</b>	<b>0.0</b>	<b>0.0</b>	<b>0.0</b>

Note:

Long-term investments are investments in financial assets, whose initial maturity was set up, in compliance with a contract, as more than one year, or has never been stipulated.

Short-term investments are investments in financial assets with maturity of one year or less than one year, pursuant to a contract, or paid as short notice.

2002				2003			
I	II	III	IV	I	II	III	
36.4	86.7	47.0	23.8	5.9	10.0	37.2	Banks
—	—	—	—	—	—	—	Long - term
36.4	86.7	47.0	23.8	5.9	10.0	37.2	Short - term
0.2	0.1	1.5	0.1	0.2	—	5.3	Other sectors
0.2	0.1	1.5	0.1	0.2	—	5.3	Long - term
—	—	—	—	—	—	—	Short - term
-44.9	-136.2	-52.5	-32.8	-28.0	-30.6	-46.3	Amortization (schedule)
-4.9	-5.6	-5.2	-5.8	-9.0	-8.7	-3.6	Monetary authorities
-4.9	-5.6	-5.2	-5.8	-9.0	-8.7	-3.6	Long - term
-1.3	-27.5	-1.5	-7.1	-6.7	-13.1	-5.5	General government
-1.3	-27.5	-1.5	-7.1	-6.7	-13.1	-5.5	Long - term
—	—	—	—	—	—	—	Short - term
-38.1	-84.6	-44.6	-19.9	-12.2	-8.6	-36.9	Banks
—	—	—	—	—	—	—	Long - term
-38.1	-84.6	-44.6	-19.9	-12.2	-8.6	-36.9	Short - term
-0.7	-18.5	-1.2	-0.1	—	-0.2	-0.4	Other sectors
-0.7	-18.5	-1.2	-0.1	—	-0.2	-0.4	Long - term
—	—	—	—	—	—	—	Short - term
1.7	7.9	3.4	7.9	4.6	14.7	1.5	Arrears
0.7	7.3	2.6	6.7	4.2	14.3	1.2	General government
1.0	0.6	0.8	1.2	0.5	0.4	0.3	Other sectors
-0.6	-0.6	-0.5	-0.3	-1.0	-0.2	-0.4	Other liabilities
—	—	—	—	—	—	—	Monetary authorities
-0.6	-0.6	-0.5	-0.3	-1.0	-0.2	-0.4	Other sectors
3.4	0.7	-31.3	-16.6	-10.5	2.4	-26.1	Reserve assets
—	—	—	—	—	—	—	Monetary gold
—	—	—	—	1.6	1.0	1.0	SDR
3.4	0.7	-31.3	-16.6	-12.2	1.4	-27.1	Foreign exchange
<b>-24.0</b>	<b>0.0</b>	<b>20.8</b>	<b>10.0</b>	<b>-14.8</b>	<b>42.3</b>	<b>41.0</b>	<b>Net errors and omissions</b>
<b>0.0</b>	<b>0.0</b>	<b>0.0</b>	<b>0.0</b>	<b>0.0</b>	<b>0.0</b>	<b>0.0</b>	<b>Overall Balance</b>

**Table I.2: Structure of Export by the HS sections<sup>1</sup>**  
(in millions of US dollars)

Group of Products	1999	2000	2001	2002	9 mon.02	9 mon.03
<b>Total</b>	<b>453.8</b>	<b>504.5</b>	<b>476.2</b>	<b>485.5</b>	<b>348.4</b>	<b>374.3</b>
Live animals and animal products	1.5	1.8	3.2	3.8	2.4	4.9
Vegetable products	18.0	14.4	13.3	19.9	9.8	11.2
Fats and animal or vegetable oil	0.5	0.5	0.0	0.2	0.2	0.1
Food prod., strong & soft drinks and vinegar,tobacco	53.4	37.3	32.7	30.1	24.4	18.9
Mineral products <sup>2</sup>	57.2	86.8	58.4	62.4	50.1	52.4
Products of chemistry and related industries	14.6	14.5	18.0	25.2	18.4	5.2
Plastics and plastic goods, rubber and rubber goods	4.0	6.1	4.0	5.1	4.2	10.0
Hides, leather, natural fur, harness and saddle products	2.8	7.6	10.3	24.2	20.1	3.7
Timber and timber products, charcoal, cork	0.4	0.6	0.3	0.4	0.3	0.2
Paper stuff from wooden pulp or other materials	0.7	0.4	1.2	0.6	0.3	0.9
Textile and textile products	32.0	42.8	29.5	59.8	32.6	33.8
Foot-wear, headgear, umbrellas, canes and whips	0.2	0.2	0.5	0.2	0.1	0.2
Products of stone, gyps, cement, asbestos, mica	5.3	4.2	5.2	8.9	5.1	14.6
Precious metals, pearls, precious stones	183.6	196.9	226.7	164.8	122.0	169.8
Non-precious metals and products from them	27.0	34.8	15.3	23.4	18.5	15.2
Machines, equipment and mechanisms	27.5	33.4	28.5	26.9	17.1	19.8
Terrestrial, air, marine transport and their parts	16.3	14.9	26.5	21.2	16.7	11.5
Optic devices and appliances, photography & cinematograph	1.5	3.3	1.3	1.8	1.4	0.7
Other special industrial products	6.4	3.3	0.3	5.4	3.9	0.2
Various industrial goods	0.6	0.6	0.9	1.0	0.7	0.9
Pieces of art, collection and antique goods	0.4	0.1	0.0	0.2	0.2	—

<sup>1</sup> source: NSC, in f.o.b. prices

<sup>2</sup> including energy products

**Table I.3: Structure of Export by the SITC sections<sup>1</sup>**  
(in millions of US dollars)

Group of Products	1999	2000	2001	2002	9 mon.02	9 mon.03
<b>Total</b>	<b>453.8</b>	<b>504.5</b>	<b>476.2</b>	<b>485.5</b>	<b>348.4</b>	<b>374.3</b>
Food products and live animals	24.0	17.6	19.3	31.2	16.9	21.1
Drinks and tobacco	45.3	33.8	28.2	21.0	18.4	12.7
Non-food raw products, excluding fuel	51.6	76.1	46.2	82.5	53.9	34.7
Mineral fuel, lubricants, and oils	53.6	82.5	54.5	58.2	46.5	46.9
Animal and vegetable oils, fats and wax	0.5	0.4	0.0	0.2	0.2	0.1
Chemical and similar products, not included in other categories	15.1	14.8	18.2	25.5	18.6	5.2
Industrial goods, classified by types of material	20.7	18.8	19.5	36.1	24.4	36.9
Machines and transportation equipment	44.5	49.1	55.6	48.8	34.4	31.8
Various finished products	15.4	16.1	10.2	19.3	14.2	16.9
Goods and transactions, not included in other SITC categories	183.1	195.3	224.6	162.8	120.8	168.0

<sup>1</sup> source: NSC, in f.o.b. prices

**Table I.4: Structure of Import by the HS sections<sup>1</sup>**  
(in millions of US dollars)

Group of Products	1999	2000	2001	2002	9 mon.02	9 mon.03
<b>Total</b>	<b>599.7</b>	<b>554.6</b>	<b>467.2</b>	<b>586.8</b>	<b>416.9</b>	<b>486.9</b>
Live animals and animal products	3.7	4.3	3.3	3.3	2.0	3.9
Vegetable products	37.5	42.3	15.5	21.7	17.8	10.6
Fats and animal or vegetable oil	6.7	3.7	3.9	5.0	3.4	8.7
Food prod., strong & soft drinks & vinegar and tobacco	34.5	31.0	35.8	47.4	32.7	42.0
Mineral products <sup>2</sup>	128.7	133.8	129.5	163.4	113.9	127.6
Products of chemistry and related industries	60.9	59.3	67.3	78.4	54.3	52.0
Plastics and plastic goods, rubber and rubber goods	16.6	22.8	22.0	24.9	17.9	26.4
Hides, leather, natural fur, harness and saddle products	0.6	2.3	4.1	2.6	2.1	0.3
Timber and timber products, charcoal, cork	4.5	7.0	5.2	6.6	4.6	7.1
Paper stuff from wooden pulp or other materials	12.3	15.8	12.8	13.4	9.2	12.7
Textile and textile products	34.2	35.2	28.8	38.9	27.2	32.2
Food-wear, headgear, umbrellas, fold. umbr-s and canes	5.7	5.2	5.1	5.9	4.5	4.7
Products of stone, gyps, cement, asbestos, mica	5.5	4.9	5.1	6.2	4.6	6.4
Precious metals, pearls, precious stones	0.2	0.2	0.1	0.1	0.1	0.0
Non-precious metals and products from them	32.0	27.6	27.3	29.7	21.6	30.7
Machines, equipment and mechanisms	148.9	98.2	56.5	89.6	68.6	68.5
Terrestrial, air, marine transport and their parts	29.9	41.8	31.8	32.1	24.0	36.1
Optic.devices and appliances, photography&cinematograph	27.2	10.8	8.0	10.6	3.8	10.6
Other special industrial products	—	0.1	0.1	0.1	—	0.1
Various industrial goods	10.1	8.3	5.0	6.8	4.3	6.4
Pieces of art, collection and antique goods	—	—	—	0.2	0.2	—

<sup>1</sup> source: NSC, in c.i.f. prices

<sup>2</sup> including energy products

**Table I.5: Structure of Import by the SITC sections<sup>1</sup>**  
(in millions of US dollars)

Group of Products	1999	2000	2001	2002	9 mon.02	9 mon.03
<b>Total</b>	<b>599.7</b>	<b>554.6</b>	<b>467.2</b>	<b>586.8</b>	<b>416.9</b>	<b>486.9</b>
Food products and live animals	52.7	60.5	35.8	53.2	38.8	38.2
Drinks and tobacco	12.8	17.3	18.7	19.2	13.9	18.7
Non-food raw products, excluding fuel	20.3	14.1	16.8	23.8	16.0	19.0
Mineral fuel, lubricants, and oils	121.7	129.1	121.0	152.0	106.6	117.3
Animal and vegetable oils, fats and wax	5.8	3.0	3.1	3.8	2.7	7.6
Chemical and similar products, not inc.in other categories	66.1	66.6	75.5	87.0	60.7	60.6
Industrial goods, classified by types of material	75.3	77.6	70.7	76.4	54.7	77.9
Machines and transportation equipment	183.1	141.8	89.3	122.6	92.8	106.9
Various finished products	61.8	44.5	36.3	48.7	30.9	40.7
Goods and transactions, not included in other SITC categories	0.1	—	—	0.0	0.0	—

<sup>1</sup> source: NSC, in c.i.f. prices

**Table I.6: Functional Structure of Export<sup>1</sup>***(in millions of US dollars)*

	1999	2000	2001	2002	9 mon.02	9 mon.03
<b>Total</b>	<b>453.8</b>	<b>504.5</b>	<b>476.2</b>	<b>485.5</b>	<b>348.4</b>	<b>374.3</b>
Consumption	64.1	57.5	57.3	76.5	49.9	61.9
Raw materials	110.3	121.1	88.6	132.1	92.4	48.1
Interim goods	200.0	212.8	244.2	187.4	137.0	198.0
Investment goods	25.7	30.5	31.5	31.3	22.5	19.4
Energy products	53.6	82.5	54.5	58.2	46.5	46.9

<sup>1</sup> according to the classification worked out by the NBKR and based on the NSC data on export at f. o. b. prices**Table I.7: Geographic Structure of Export<sup>1</sup>***(in millions of US dollars)*

	1999	2000	2001	2002	9 mon.02	9 mon.03
<b>Total</b>	<b>453.8</b>	<b>504.5</b>	<b>476.2</b>	<b>485.5</b>	<b>348.4</b>	<b>374.3</b>
<b>CIS countries</b>	<b>183.3</b>	<b>207.4</b>	<b>168.5</b>	<b>168.8</b>	<b>116.0</b>	<b>126.5</b>
Russia	70.7	65.1	64.5	80.0	51.9	55.5
Kazakhstan	45.0	33.4	39.0	36.8	26.4	39.3
Uzbekistan	46.6	89.4	48.0	27.8	25.0	12.5
Tadjikistan	9.5	7.5	6.7	10.2	5.2	12.1
Belarus	4.9	3.0	3.2	1.3	0.9	1.3
Ukraine	1.5	1.1	2.9	4.3	3.3	3.1
Other CIS countries	5.2	7.9	4.2	8.3	3.4	2.8
<b>Non-CIS countries</b>	<b>270.5</b>	<b>297.1</b>	<b>307.6</b>	<b>316.8</b>	<b>232.4</b>	<b>247.8</b>
Switzerland	18.1	34.1	124.2	96.4	82.2	49.9
UAE	1.1	1.4	0.5	68.8	40.0	119.8
China	25.3	44.1	19.4	41.1	32.9	18.5
USA	11.2	2.8	7.1	36.1	28.1	5.6
Turkey	4.6	7.2	13.8	16.4	10.7	6.3
Canada	0.3	0.1	1.2	4.9	4.6	21.7
Germany	148.2	144.6	94.4	1.8	1.5	1.6
United Kingdom	12.4	18.8	14.1	0.9	0.8	0.1
Other non-CIS countries	49.3	44.0	32.9	50.6	31.5	24.4

<sup>1</sup> source: NSC, in f.o.b. prices**Table I.8: Export of goods by individuals<sup>1</sup>***(in millions of US dollars)*

	1999	2000	2001	2002	9 mon.02	9 mon.03
<b>Total</b>	<b>21.9</b>	<b>20.3</b>	<b>28.1</b>	<b>23.4</b>	<b>18.1</b>	<b>14.5</b>
included in the official statistical data	13.2	13.9	24.0	21.6	16.6	13.8
CIS	13.2	8.0	11.1	11.4	7.8	11.5
Non-CIS countries	0.0	5.9	12.9	10.2	8.9	2.3
evaluative	8.7	6.4	4.1	1.8	1.4	0.7
CIS	8.2	6.3	3.7	1.6	1.2	0.7
Non-CIS countries	0.5	0.1	0.4	0.2	0.2	0.0

<sup>1</sup> source: NSC, in f. o. b. prices



**Table I.9: Functional Structure of Import<sup>1</sup>**  
(in millions of US dollars)

	1999	2000	2001	2002	9 mon.02	9 mon.03
<b>Total</b>	<b>599.7</b>	<b>554.6</b>	<b>467.2</b>	<b>586.8</b>	<b>416.9</b>	<b>486.9</b>
Consumption	181.3	205.9	167.7	193.8	136.3	165.3
Raw materials	29.1	18.7	31.8	40.2	30.0	23.2
Interim goods	107.5	93.7	89.0	85.1	59.7	81.9
Investment goods	160.2	107.2	57.7	115.6	84.3	99.1
Energy products	121.8	129.2	121.0	152.0	106.6	117.4

<sup>1</sup> in according with classification worked out at the NBKR on the basis of NSC import data in c. i. f prices

**Table I.10: Geographic Structure of Import<sup>1</sup>**  
(in millions of US dollars)

	1999	2000	2001	2002	9 mon.02	9 mon.03
<b>Total</b>	<b>599.7</b>	<b>554.6</b>	<b>467.2</b>	<b>586.8</b>	<b>416.9</b>	<b>486.9</b>
<b>CIS countries</b>	<b>259.3</b>	<b>299.0</b>	<b>257.0</b>	<b>322.6</b>	<b>227.0</b>	<b>277.4</b>
Russia	109.4	132.6	85.1	116.7	80.3	119.4
Kazakhstan	72.7	57.4	81.8	123.9	87.7	114.1
Uzbekistan	50.0	75.1	66.7	60.1	43.0	26.9
Ukraine	6.3	7.0	6.2	7.8	5.3	8.7
Belarus	5.3	3.9	6.0	5.1	4.2	4.5
Turkmenistan	7.8	18.7	9.0	1.7	1.3	0.1
Other CIS countries	15.6	23.0	11.2	8.9	6.5	3.8
<b>Non-CIS countries</b>	<b>340.5</b>	<b>255.6</b>	<b>210.3</b>	<b>264.2</b>	<b>190.0</b>	<b>209.5</b>
China	36.9	36.9	48.5	59.0	43.9	49.9
USA	54.2	53.8	26.8	47.4	31.8	25.7
Germany	47.3	25.2	24.3	31.4	20.7	28.1
Turkey	23.1	26.8	15.8	17.0	12.3	20.1
Canada	25.4	11.3	10.9	9.0	7.3	6.4
Other non-CIS countries	153.6	101.6	84.0	100.3	74.0	79.3

<sup>1</sup> source: NSC, in c.i.f. prices

**Table I.11: Import of goods by individuals<sup>1</sup>**  
(in millions of US dollars)

	1999	2000	2001	2002	9 mon.02	9 mon.03
<b>Total</b>	<b>58.3</b>	<b>56.7</b>	<b>50.9</b>	<b>59.5</b>	<b>41.8</b>	<b>54.9</b>
included in official statistics	44.8	52.7	46.6	56.6	39.2	50.8
CIS	11.6	19.3	7.0	5.6	3.2	4.9
Non-CIS countries	33.2	33.4	39.6	51.0	36.0	45.8
evaluative	13.5	3.9	4.3	2.9	2.7	4.2
CIS	9.7	3.5	3.6	2.3	2.2	2.7
Non-CIS countries	3.9	0.4	0.7	0.6	0.5	1.4

<sup>1</sup> source: NSC, in c. i. f. prices

**Table I.12: Export of Major Types of Products<sup>1</sup>**

<i>Products</i>	<i>unit of measur.</i>	<b>2001</b>		<b>2002</b>	
		<i>in kind</i>	<i>mil. US\$</i>	<i>in kind</i>	<i>mil. US\$</i>
<b>Total</b>			<b>476.2</b>		<b>485.5</b>
Milk products and bird's eggs			3.7		5.7
Cereals and cereals products	<i>thou tons</i>	8.5	1.3	4.8	0.8
Vegetables and fruits	<i>thou tons</i>	91.5	10.9	104.9	16.2
Sugar, sugar-ware and honey	<i>thou tons</i>	9.2	2.6	17.3	5.8
Coffee,tea,cocoa and spices	<i>thou tons</i>	0.4	0.5	1.2	2.2
Beverage foods			0.6		0.4
Tobacco and tobacco products			27.6		20.7
Raw tobacco and tobacco waste	<i>thou tons</i>	29.8	25.6	23.9	19.8
Cattle hides, hide and peltry			8.4		19.3
Oil seeds and oil fruits	<i>thou tons</i>	1.4	0.2	0.1	0.0
Textile fibers	<i>thou tons</i>	29.4	24.5	64.9	48.1
Cotton	<i>thou tons</i>	28.1	22.4	62.6	45.3
Wool	<i>thou tons</i>	1.1	1.5	2.2	2.4
Raw fertilizers			1.7		2.3
Stone, sand and gravel	<i>thou tons</i>	720.9	1.0	325.6	1.1
Metal ores and scrap	<i>thou tons</i>	127.9	9.8	215.0	11.0
Primary goods			1.2		1.4
Oil and Oil products	<i>thou tons</i>	27.8	7.4	97.7	35.4
Electric energy	<i>mil.kwh</i>	2 164.7	46.8	1 062.4	22.0
Inorganic chemical agents	<i>thou tons</i>	4.3	16.3	5.6	23.6
Dye and tanning materials	<i>thou tons</i>	0.2	0.1	0.7	0.3
Paper, cardboard and products from these materials	<i>thou tons</i>	0.3	0.1	1.0	0.5
Textile yarn and cloth			2.9		6.1
Products from non-metallic mineral resources			6.7		10.4
Lime and cement			6.0		7.3
Non-ferrous metals			3.6		7.0
Various imperfect metals	<i>thou tons</i>	1.1	2.0	1.2	1.9
Other metal products			3.2		6.2
Energy generating machinery and equipment			4.6		0.9
Machinery for specific sectors			3.7		3.4
Metal processing machines			0.9		0.6
Non-specific machinery and equipment			4.2		4.0
Communication and sound recording equipment			0.6		2.5
Electric machinery and devices, their components			15.1		16.3
Cars			26.3		20.5
Motor vehicles	<i>pieces</i>	207.0	4.2	64.0	0.5
Trucks	<i>pieces</i>	152.0	1.8	106.0	0.5
Other cars	<i>pieces</i>	4 261.0	15.2	278.0	11.3
Clothes and accessories			2.3		5.8
Special instruments and devices			1.2		1.5
Finished products not included in other categories			5.8		11.0
Nonmonetary gold			224.6		162.8

<sup>1</sup> source: NSC, in f.o.b. prices

9 mon. 02		9 mon. 03			
<i>in kind</i>	<i>mil. US\$</i>	<i>in kind</i>	<i>mil. US\$</i>	<i>unit of measur.</i>	<i>Products</i>
	<b>348.4</b>		<b>374.3</b>		<b>Total</b>
	4.4		6.8		Milk products and bird's eggs
2.6	0.4	9.6	1.4	<i>thou tons</i>	Cereals and cereals products
36.5	7.5	29.4	7.6	<i>thou tons</i>	Vegetables and Fruits
9.1	3.1	8.1	3.0	<i>thou tons</i>	Sugar, sugar-ware and honey
0.7	1.2	0.7	1.8	<i>thou tons</i>	Coffee,tea,cocoa and spices
	0.3		0.7		Beverage foods
	18.1		12.0		Tobacco and tobacco products
20.3	17.5	13.3	11.7	<i>thou tons</i>	Raw tobacco and tobacco waste
	16.5		6.3		Cattle hides, hide and peltry
0.0	0.0	0.2	0.0	<i>thou tons</i>	Oil seeds and oil fruits
36.3	25.1	19.8	17.7	<i>thou tons</i>	Textile fibers
34.8	23.4	18.0	15.5	<i>thou tons</i>	Cotton
1.5	1.4	1.6	1.7	<i>thou tons</i>	Wool
	2.0		1.0		Raw fertilizers
298.8	1.0	143.9	0.5	<i>thou tons</i>	Stone, sand and gravel
171.9	8.8	232.2	8.4	<i>thou tons</i>	Metal ores and scrap
	1.1		1.2		Primary goods
74.3	27.0	95.3	33.4	<i>thou tons</i>	Oil and Oil products
835.7	19.3	930.9	13.3	<i>mil.kwh</i>	Electric energy
3.9	17.1	2.5	4.4	<i>thou tons</i>	Inorganic chemical agents
0.5	0.2	0.3	0.1	<i>thou tons</i>	Dye and tanning materials
0.5	0.2	1.5	0.8	<i>thou tons</i>	Paper, cardboard and products from these materials
	3.5		6.5		Textile yarn and cloth
	6.4		19.0		Products from non-metallic mineral resources
	5.3		9.9		Lime and cement
	5.0		5.4		Non-ferrous metals
0.8	1.3	0.4	0.6	<i>thou tons</i>	Various imperfect metals
	4.9		2.0		Other metal products
	0.5		0.9		Energy generating machinery and equipment
	2.7		4.5		Machinery for specific sectors
	0.5		0.4		Metal processing machines
	3.0		2.5		Non-specific machinery and equipment
	0.3		0.1		Communication and sound recording equipment
	10.8		11.9		Electric machinery and devices, their components
	16.4		9.7		Cars
51.0	0.4	43.0	0.2	<i>pieces</i>	Motor vehicles
59.0	0.3	213.0	1.1	<i>pieces</i>	Trucks
2 304.0	9.9	976.0	2.9	<i>pieces</i>	Other cars
	4.0		9.7		Clothes and accessories
	1.0		0.7		Special instruments and devices
	8.5		5.7		Finished products not included in other categories
	120.8		168.0		Nonmonetary gold

**Table I.13: Import of Major Types of Products<sup>1</sup>**

<i>Products</i>	<i>unit of measur.</i>	2001		2002	
		<i>in kind</i>	<i>mil. US\$</i>	<i>in kind</i>	<i>mil. US\$</i>
<b>Total</b>			<b>467.2</b>		<b>586.8</b>
Cereals and cereals products	<i>thou tons</i>	94.1	11.3	190.4	20.4
Sugar, sugar-ware and honey	<i>thou tons</i>	23.8	7.6	48.0	15.3
Coffee, tea, cocoa, spicery	<i>thou tons</i>	6.0	8.6	6.6	7.3
Beverages			6.1		9.6
Tobacco and tobacco products			12.6		9.5
Raw tobacco and tobacco waste	<i>thou tons</i>	1.1	2.0	1.0	1.7
Finished tobacco	<i>thou pieces</i>	1 580.7	9.8	1 279.4	7.8
Mineral and raw fertilizers			4.5		5.9
Coal, coke and briquets	<i>thou tons</i>	345.6	6.4	888.2	13.9
Oil and Oil products	<i>thou tons</i>	335.8	70.7	386.8	85.6
Petroleum oils	<i>thou tons</i>	—	—	10.4	0.8
Oil products	<i>thou tons</i>	311.4	66.6	365.5	83.0
Gasoline for motor vehicles	<i>thou tons</i>	143.5	29.3	152.8	24.3
Kerosene	<i>thou tons</i>	45.1	12.8	129.8	42.5
Diesel fuel	<i>thou tons</i>	95.0	19.9	58.3	11.8
Other Oil products	<i>thou tons</i>	20.4	1.2	17.7	1.1
Natural gas	<i>mil.m<sup>3</sup></i>	665.7	33.2	855.7	41.8
Electric energy	<i>mil.kwh</i>	322.0	9.8	384.9	9.7
Vegetable oils and fats	<i>thou tons</i>	5.3	2.9	6.4	3.5
Organic chemicals			3.0		4.5
Other carbohydrates	<i>thou tons</i>	0.0	0.0	0.1	0.1
Nonorganic chemicals	<i>thou tons</i>	59.1	17.5	76.8	19.0
Medicaments	<i>thou tons</i>	0.8	20.5	0.9	24.3
Volatile oils and perfumery	<i>thou tons</i>	14.5	10.0	16.6	11.7
Fertilizers	<i>thou tons</i>	21.8	1.9	29.2	2.6
Primary form plastic	<i>thou tons</i>	5.1	5.3	6.5	6.3
Chemicals and chemical products			6.6		6.5
Rubber goods			8.0		10.9
Rubber tire casing	<i>mil pieces</i>	0.7	6.9	0.6	9.9
Paper, cardboard and paper products	<i>thou tons</i>	14.4	10.8	15.0	10.7
Textile yarn and cloth			16.0		16.3
Wrought artificial and textile cloth	<i>mil.sq.m</i>	28.6	6.8	48.4	9.7
Products from nonmetallic mineral resources			5.7		6.9
Cast iron and steel	<i>thou tons</i>	27.2	8.7	30.9	10.7
Metal products			13.2		10.8
Base metals produce	<i>thou tons</i>	15.2	9.0	11.7	7.6
Energy generating machinery and equipment			3.6		1.8
Machinery designated for specific sectors			22.8		50.4
Machinery and equipments for civil construction			9.7		12.4
Machinery for textile and leather industry			1.5		0.5
Machinery for food processing			0.9		0.7
Working machines, equipment for specific sectors of			6.4		21.2
Non-specific machinery and equipment			11.6		8.6
Office appliances and equipment for data processing			5.4		5.8
Machinery for automatic processing	<i>thou pieces</i>	58.8	3.6	46.2	4.0
Equipment for electric communication			6.0		10.5
Electric machines and devices			8.5		16.2
Electric devices for contact locking and breaking			1.0		5.3
Electric distribution equipment	<i>thou tons</i>	0.6	1.2	0.8	1.9
Cars			29.2		26.0
Motor vehicles	<i>pieces</i>	849.0	5.3	743.0	4.0
Trucks	<i>pieces</i>	81.0	1.9	184.0	3.5
Other cars	<i>pieces</i>	14 000.0	15.0	10 045.0	14.9
Car components and accessories			5.6		2.5
Furniture and components; bedding			3.4		3.7
Clothes and accessories			10.1		17.5
Foot-wear			4.8		5.6
Special scientific and control devices			6.6		9.5
Medical tools and devices			2.3		4.7
Various finished products not included in other categories			9.7		9.7

<sup>1</sup> source: NSC, in c. i. f. prices

9 mon. 02		9 mon. 03		unit of measur.	Products
in kind	mil. US\$	in kind	mil. US\$		
	<b>416.9</b>		<b>486.9</b>		<b>Total</b>
152.2	16.7	77.8	9.6	thou tons	Cereals and cereals products
35.8	11.1	33.9	11.2	thou tons	Sugar, sugar-ware and honey
4.5	4.4	5.6	6.0	thou tons	Coffee, tea, cocoa, spicery
	6.8		10.3		Beverages
	7.1		8.3		Tobacco and tobacco products
0.9	1.5	1.1	1.6	thou tons	Raw tobacco and tobacco waste
1 028.4	5.6	1 122.6	6.7	thou pieces	Finished tobacco
	3.9		5.6		Mineral and raw fertilizers
613.4	7.7	577.7	13.3	thou tons	Coal, coke and briquets
284.0	60.7	362.4	82.3	thou tons	Oil and Oil products
7.9	0.6	1.1	0.1	thou tons	Petroleum oils
269.3	58.9	346.7	80.1	thou tons	Oil products
114.4	17.0	140.9	28.3	thou tons	Gasoline for motor vehicles
95.8	31.0	114.6	36.1	thou tons	Kerosene
37.6	7.5	49.7	10.5	thou tons	Diesel fuel
16.4	1.0	34.6	2.1	thou tons	Other Oil products
628.1	30.3	462.4	20.6	mil.M <sup>3</sup>	Natural gas
314.3	7.4	108.0	0.5	mil.kwh	Electric energy
4.7	2.5	6.9	4.6	thou tons	Vegetable oils and fats
	3.3		1.7		Organic chemicals
0.1	0.0	0.0	0.1	thou tons	Other carbohydrates
48.6	14.1	42.0	6.4	thou tons	Nonorganic chemicals
0.6	15.6	1.3	13.2	thou tons	Medicaments
10.3	7.6	17.6	12.5	thou tons	Volatile oils and perfumery
21.5	1.9	31.8	3.2	thou tons	Fertilizers
4.8	4.8	6.8	6.9	thou tons	Primary form plastic
	4.4		5.9		Chemicals and chemical products
	7.3		11.5		Rubber goods
449.4	6.5	537.7	10.6	mil pieces	Rubber tire casing
10.3	7.4	13.3	10.7	thou tons	Paper, cardboard and paper products
	12.1		14.9		Textile yarn and cloth
35.5	7.4	37.3	8.8	mil.sq.m	Wrought artificial and textile cloth
	5.0		7.6		Products from nonmetallic mineral resources
22.9	7.7	26.8	12.5	thou tons	Cast iron and steel
	7.7		12.1		Metal products
8.8	5.6	8.9	6.0	thou tons	Base metals produce
	1.4		2.5		Energy generating machinery and equipment
	42.3		29.1		Machinery designated for specific sectors
	9.2		6.1		Machinery and equipments for civil construction
	0.5		0.8		Machinery for textile and leather industry
	0.3		4.5		Machinery for food processing
	17.4		13.1		Working machines, equipment for specific sectors of
	7.1		10.8		Non-specific machinery and equipment
	3.9		4.9		Office appliances and equipment for data processing
36.9	2.7	29.3	3.2	thou pieces	Machinery for automatic processing
	9.1		8.4		Equipment for electric communication
	7.9		14.0		Electric machines and devices
	2.0		0.8		Electric devices for contact locking and breaking
0.4	0.9	1.1	2.6	thou tons	Electric distribution equipment
	18.4		27.4		Cars
535.0	3.0	716.0	4.1	pieces	Motor vehicles
152.0	2.9	119.0	1.6	pieces	Trucks
6 431.0	9.7	11 297.0	15.3	pieces	Other cars
	1.8		5.4		Car components and accessories
	2.4		3.7		Furniture and components; bedding
	11.6		13.5		Clothes and accessories
	4.4		4.5		Foot-wear
	3.3		7.7		Special scientific and control devices
	1.1		5.1		Medical tools and devices
	7.4		8.1		Various finished products not included in other categories

**Table I.14.: Impact of Price and Quantity on the Volume of Export<sup>1</sup>**

	2003	2003	2002	Index of		
	mil US \$	mil US \$	mil US \$	prices	physic. vol	value
	<i>n903<sup>2</sup>*p903<sup>3</sup></i>	<i>n903*p902</i>	<i>n902*p902</i>			
	A	B	C	A / B	B / C	A / C
Nonmonetary gold	168.0	133.4	120.8	1.26	1.10	1.39
Oil and Oil products	33.4	34.6	27.0	0.96	1.28	1.24
Cotton	15.5	12.1	23.4	1.28	0.52	0.66
Electric energy	13.3	21.5	19.3	0.62	1.11	0.69
Raw tobacco and tobacco waste	11.7	11.4	17.5	1.02	0.65	0.67
Electric filament lamps	10.4	9.5	9.6	1.09	0.99	1.08
Fruits & nuts	7.6	6.0	7.5	1.26	0.80	1.01
Clothes and accessories	7.4	8.4	3.1	0.87	2.73	2.39
Glass, casted and rolled	6.9	9.0	0.5	0.77	18.83	14.45
Asbestos-cement construction materials	5.4	4.6	4.0	1.17	1.16	1.35
Milk, cream and milky products	4.9	6.5	3.0	0.75	2.17	1.62
Cattle hides	4.8	7.8	14.8	0.62	0.52	0.33
Cement, portland cement	4.4	4.2	1.3	1.05	3.27	3.42
Inorganic chemical agents	4.4	10.7	17.1	0.41	0.63	0.26
Metal and non-ferrous metal scrap	4.1	4.9	3.6	0.83	1.38	1.15
Metal and imperfect metal scrap	3.8	4.1	4.8	0.93	0.85	0.79
Sugar, sugar-ware and honey	3.0	2.7	3.1	1.10	0.89	0.98
Manmade fiber cloth	2.5	2.7	1.0	0.90	2.65	2.38
Coffee,tea,cocoa and spices	1.8	1.2	1.2	1.48	0.98	1.46
Wool and other hair of animals	1.7	1.6	1.4	1.10	1.11	1.22
Aluminium	1.6	1.1	1.7	1.51	0.62	0.95
Cheese and cottage cheese	1.5	1.8	1.4	0.81	1.34	1.09
Silver	1.3	1.1	1.0	1.19	1.11	1.32
Floor carpeting	1.3	1.2	0.6	1.08	2.15	2.31
Trucks	1.1	1.0	0.3	1.08	3.61	3.89
Lamb and sheep hides	1.0	1.0	1.1	1.00	0.90	0.90
Textile yarn	0.9	0.9	0.6	1.09	1.42	1.55
Paper, cardboard and products from these materials	0.8	0.5	0.2	1.56	2.82	4.38
Seeds, fruits and sporules, excluding other categories	0.8	0.4	0.8	2.35	0.42	1.00
Sugar-beet seeds	0.8	0.8	0.7	1.00	1.10	1.10
Hand & machine tools	0.8	0.9	0.8	0.86	1.05	0.90
Glass vessels; glass thermos components	0.7	0.5	0.2	1.53	2.48	3.79
Other machinery for food processing	0.7	0.4	0.1	1.71	3.25	5.55
Textile sacks and bags	0.7	0.5	0.3	1.26	1.59	2.00
Articulated-link chains and their components	0.7	0.6	0.7	1.12	0.88	0.99
Nonalcoholic beeverages, including other categories	0.6	1.2	0.2	0.53	4.96	2.64
High and low milled flour	0.6	0.5	0.3	1.13	1.97	2.23
Mineral water and nonalcoholic beeverages	0.6	1.0	0.2	0.59	4.87	2.86
Various imperfect metals	0.6	0.7	1.3	0.79	0.55	0.43
Cast iron and steel	0.5	0.5	0.6	1.15	0.84	0.97
<b>Full range of goods (mil. US\$)</b>	<b>346.1</b>	<b>330.8</b>	<b>317.4</b>	<b>1.05</b>	<b>1.04</b>	<b>1.09</b>
<b>Full range of goods (in % of total export)</b>	<b>92%</b>		<b>91%</b>			
<b>Total export</b>	<b>374.3</b>		<b>348.4</b>			<b>1.07</b>

<sup>1</sup> based on NSC data on export at f.o.b. prices; first 40 large export items are indicated in the table for 9 months of 2003<sup>2</sup> physical volume of export for 9 months of 2003<sup>3</sup> estimate export price for 9 months of 2003

**Table I.15: Impact of Price and Quantity on the Volume of Import<sup>1</sup>**

	2003	2003	2002	Index of		
	mil US \$ n903 <sup>2</sup> *p903 <sup>3</sup>	mil US \$ n903*p902	mil US \$ n902*p902	prices	physic. vol	value
	A	B	C	A / B	B / C	A / C
Oil and Oil products	82.3	77.4	60.7	1.06	1.28	1.36
Natural Gas	20.6	22.3	30.3	0.92	0.74	0.68
Coal, coke and briquets	13.3	7.3	7.7	1.83	0.94	1.72
Medicaments, including veterinary	13.2	31.5	15.6	0.42	2.02	0.85
Cast iron and steel	12.5	9.1	7.7	1.38	1.17	1.62
Volatile oils	12.5	13.0	7.6	0.96	1.71	1.64
Sugar, sugar-ware and honey	11.2	10.5	11.1	1.07	0.95	1.01
Paper, cardboard and paper products	10.7	9.5	7.4	1.13	1.29	1.45
Rubber tire casing	10.6	7.8	6.5	1.37	1.20	1.64
Sorting and screening machines	9.6	8.8	15.2	1.09	0.58	0.63
Manmade fiber cloth	8.8	7.8	7.4	1.13	1.05	1.19
Alcoholic beevarages	8.2	8.0	4.8	1.03	1.66	1.71
Vegetable oils and fats	7.6	5.3	2.6	1.44	1.99	2.87
Primary form plastic	6.9	6.7	4.8	1.02	1.40	1.43
Tobacco-containing cigarettes	6.7	6.1	5.6	1.11	1.09	1.21
Nonorganic chemicals	6.4	12.2	14.1	0.53	0.86	0.46
Coffee,tea,cocoa and spices	6.0	5.4	4.4	1.11	1.23	1.37
Base metals produce	6.0	5.6	5.6	1.07	1.01	1.08
Radiotelephone devices and units	5.7	1.2	4.3	4.89	0.27	1.32
Dye and tanning materials	5.7	6.0	3.6	0.94	1.69	1.59
Machines and units with electric heating	4.7	0.3	0.1	17.49	2.13	37.19
Other machinery for food processing	4.5	0.3	0.2	17.32	1.04	17.97
Knitted ready-made garment	4.4	2.4	3.7	1.86	0.65	1.21
Grain-crops (incl. amecorn) and maangcorn	4.4	4.7	9.6	0.95	0.49	0.46
Motor and transport vehicles	4.1	4.0	3.0	1.02	1.34	1.37
Other minerals	3.5	2.5	2.5	1.39	1.01	1.40
Footware with rubber upper and sole	3.5	4.3	0.3	0.80	12.59	10.13
Non-primary form plastic	3.2	3.7	2.1	0.86	1.79	1.54
Machinery for automatic processing of data	3.2	2.2	2.7	1.47	0.79	1.17
Fertilizers	3.2	2.8	1.9	1.14	1.47	1.67
Iron and steel construction and components	2.9	2.0	0.3	1.41	6.17	8.70
Cereal and flour products	2.9	2.3	2.1	1.23	1.11	1.37
Other tools and devices	2.8	0.3	0.3	8.12	1.22	9.89
Old clothes and other old soft goods	2.7	3.5	2.6	0.76	1.34	1.02
Softwood, split	2.7	1.9	1.3	1.40	1.44	2.01
Meat and meat products	2.7	2.9	0.8	0.91	3.90	3.55
Electric distribution equipment	2.6	2.3	0.9	1.17	2.45	2.88
Ores and imperfect metals concentrates	2.6	2.5	2.3	1.03	1.08	1.11
Floor carpeting	2.5	2.5	1.5	0.98	1.73	1.70
Vegetables and Fruits	2.5	2.1	1.7	1.18	1.24	1.47
<b>Full range of goods (mil. US \$)</b>	<b>437.4</b>	<b>459.5</b>	<b>381.9</b>	<b>0.95</b>	<b>1.20</b>	<b>1.15</b>
<b>Full range of goods (in % of total import)</b>	<b>90%</b>		<b>92%</b>			
<b>Total import</b>	<b>486.9</b>		<b>416.9</b>			<b>1.17</b>

<sup>1</sup> based on NSC data on import at c.i.f. prices; first 40 large import items are indicated in the table for 9 months of 2003<sup>2</sup> physical volume of import for 9 months of 2003<sup>3</sup> accounted import price for 9 months of 2003

## Tables I.16 - I.25: Export of Basic Goods by Countries

Table I.16: Export of Goods to Russia

Products	unit of measurement	1999		2000		2001		2002		9 mon.02		9 mon.03	
		in kind	mil. US\$	in kind	mil. US\$	in kind	mil. US\$	in kind	mil. US\$	in kind	mil. US\$	in kind	mil. US\$
<b>Total</b>			<b>70.7</b>		<b>65.1</b>		<b>64.5</b>		<b>80.0</b>		<b>51.9</b>		<b>55.5</b>
Cotton fiber, uncombed	thou tons	6.4	5.3	12.3	12.1	16.4	12.7	36.1	26.1	19.0	12.9	11.6	9.7
Raw tobacco	thou tons	29.1	34.0	21.0	25.2	24.4	21.2	21.3	17.8	18.3	15.9	10.3	9.1
Filament lamps	mln pieces	85.5	4.2	110.5	6.1	97.6	5.1	106.6	5.2	69.4	3.3	90.3	5.2
Kerosene	thou tons	1.8	0.5	1.1	0.4	7.4	2.5	12.6	4.3	9.4	3.2	9.2	2.9
Ready-made garments, all types			0.7		0.5		0.4		3.9		2.7		7.3
Spare parts and equip. for motor vehicles			1.0		1.2		2.6		2.9		1.9		1.9
Sugar	thou tons	0.3	0.2	1.1	0.4	2.5	1.0	7.7	2.7	0.8	0.3	5.0	1.9
Fruits	thou tons	17.7	1.3	23.8	1.5	18.1	1.3	14.0	1.2	8.8	0.7	6.0	0.7
Other fresh vegetables	thou tons	10.1	1.0	4.0	0.5	2.5	0.5	6.2	0.9	5.1	0.6	8.8	1.5
Fresh tomatoes	thou tons	9.7	1.3	6.6	1.0	2.2	0.5	3.5	0.7	3.4	0.7	1.2	0.3
Other products of ferrous metals			0.3		0.4		0.7		0.7		0.6		0.6
Products of non-organic chemistry			0.9		1.1		0.6		0.6		0.5		0.4
Spare parts for machinery and equipment			0.2		0.5		0.1		0.5		0.2		0.2
Other seeds	thou tons	9.7	1.6	0.2	0.1	0.1	0.0	0.0	0.5	0.0	0.5	0.1	0.0
Cotton cloth	mil. linear m.	2.8	1.0	3.1	0.8	0.7	0.2	1.1	0.4	0.6	0.2	0.2	0.1
Tackle	pieces	419.0	0.2	477.0	0.2	1 066.0	0.4	867.0	0.4	670.0	0.3	428.0	0.2
Other non-organic compounds			0.8		0.6		0.5		0.4		0.3		0.2
Cast and rolled glass	thou. sq. m.	—	—	24.9	0.1	—	—	207.9	0.4	—	—	1 712.9	2.4
Onion	thou tons	34.2	1.8	11.3	0.7	3.4	0.2	5.6	0.4	4.1	0.2	3.6	0.3
Electric transformers	thou pieces	6.9	0.2	...	0.3	16.7	0.3	18.0	0.3	14.2	0.2	9.2	0.2
Woollen cloth	mil. linear m.	0.1	0.3	0.1	0.3	0.1	0.1	0.1	0.2	0.1	0.2	0.0	0.1
Textile underclothes	thou pieces	354.3	0.1	386.6	0.2	197.2	0.3	236.2	0.1	189.8	0.1	192.8	0.0
Other footwear			0.0		0.1		0.0		0.1		0.0		0.0
Dried fruits	thou tons	9.6	1.3	2.0	0.3	0.2	0.1	0.2	0.1	0.1	0.0	0.1	0.0
Bed-linen, table-linen and other			0.2		0.3		0.1		0.0		0.0		0.1
Other knitted goods			0.1		0.2		0.1		0.0		0.0		0.0
Meat and tinned meat products	thou conv tins	8.3	0.0	—	—	—	—	4.6	0.0	2.8	0.0	10.1	0.1
Spare parts for machinery			0.1		0.1		0.1		0.0		0.0		0.1
Instruments for punching and drilling			0.3		0.1		0.1		0.0		0.0		0.0
Rotary pumps	thou pieces	709.0	0.0	280.0	0.0	651.0	0.0	21.0	0.0	21.0	0.0	10.0	0.0



Table I.18: Export of Goods to Kazakhstan

Products	unit of measurement	1999		2000		2001		2002		9 mon.02		9 mon.03	
		in kind	mil. US\$	in kind	mil. US\$	in kind	mil. US\$	in kind	mil. US\$	in kind	mil. US\$	in kind	mil. US\$
<b>Total</b>			<b>45.0</b>		<b>33.4</b>		<b>39.0</b>		<b>36.8</b>		<b>26.4</b>		<b>39.3</b>
Other plastic products			1.2		2.6		2.6		3.9		3.2		4.0
Ferrous metals cisterns, butts, boxes	<i>thou tons</i>	0.4	0.3	0.2	0.1	0.5	1.7	1.0	3.5	0.6	2.9	0.1	0.0
Electric energy	<i>mil. kwh</i>	892.2	15.8	1 072.7	11.6	1 048.6	10.4	424.4	3.4	334.8	2.6	423.6	4.0
Ice-cream	<i>thou tons</i>	0.2	0.1	0.5	0.2	1.3	0.7	2.9	2.2	2.8	2.1	3.1	2.7
Cheese	<i>thou tons</i>	0.4	0.6	0.4	0.5	0.8	1.1	1.4	2.0	0.9	1.3	1.1	1.4
Corrugated asbestos boards	<i>mil.conv.plates</i>	40.9	2.0	28.5	1.2	39.3	1.7	41.8	1.9	31.8	1.4	36.2	1.9
Electric filament lamps	<i>mil. pieces</i>	2.6	0.1	2.3	0.1	11.5	0.7	28.7	1.6	17.1	1.0	16.6	1.0
Glass, casted and rolled	<i>mil. sq. m</i>	0.3	0.4	0.0	0.0	0.0	0.0	0.8	1.5	0.2	0.4	1.9	3.4
Cement, portland cement	<i>thou tons</i>	40.0	1.0	87.4	1.9	60.1	1.4	65.2	1.5	54.6	1.2	180.5	4.3
Milk and milky products	<i>thou tons</i>	0.9	0.1	3.5	0.5	3.6	0.9	4.1	0.9	2.5	0.6	9.1	2.0
Sugar	<i>thou tons</i>	8.8	3.0	1.1	0.4	1.7	0.5	2.6	0.9	2.6	0.9	0.0	0.0
Motor vehicles	<i>pieces</i>	260.0	2.0	264.0	1.8	332.0	2.3	106.0	0.7	88.0	0.6	51.0	0.4
Other non-organic compounds			0.1		0.2		0.5		0.6		0.6		0.5
Molasses	<i>thou tons</i>	6.0	1.4	8.9	0.9	3.4	0.7	1.9	0.4	1.3	0.3	1.9	0.3
Glass containers (bottles, jars)	<i>thou pieces</i>	4 664.3	0.3	3 812.0	0.3	2 079.4	0.2	5 514.1	0.3	4 306.7	0.2	10 873.5	0.7
Other special-purpose equipment			0.5		0.1		0.1		0.3		0.1		0.4
Spare parts for machinery and equipment			1.0		0.7		0.4		0.2		0.2		0.2
Butter	<i>thou tons</i>	0.1	0.1	0.0	0.0	0.2	0.4	0.1	0.1	0.0	0.1	0.2	0.4
Raw tobacco	<i>thou tons</i>	0.1	0.0	1.3	1.1	0.5	0.5	0.2	0.1	0.1	0.1	0.6	0.4
Equipment for food industry			1.0		0.0		0.0		0.1		0.1		0.7
Cigarettes and cigars	<i>mil. pieces</i>	—	—	17.8	0.3	115.5	0.6	1.3	0.1	1.3	0.1	—	—
Water, including mineral	<i>thou litres</i>	507.9	0.4	1 869.7	0.5	1 003.0	0.4	224.8	0.1	224.8	0.1	1 080.0	0.2
Tea	<i>tons</i>	32.1	0.0	9.0	0.0	26.9	0.0	48.9	0.0	27.6	0.0	37.1	0.0
Trucks	<i>pieces</i>	25.0	0.5	157.0	1.0	25.0	0.3	10.0	0.0	8.0	0.0	17.0	0.1

Table I.18: Export of Goods to Uzbekistan

Products	unit of measurement	1999		2000		2001		2002		9 mon.02		9 mon.03	
		in kind	mil. US\$	in kind	mil. US\$	in kind	mil. US\$	in kind	mil. US\$	in kind	mil. US\$	in kind	mil. US\$
<b>Total</b>			<b>46.6</b>		<b>89.4</b>		<b>48.0</b>		<b>27.8</b>		<b>25.0</b>		<b>12.5</b>
Electric energy	mil. kwh	970.0	31.6	1 925.6	64.3	1 038.1	34.7	523.3	17.5	500.4	16.7	217.1	7.3
Corrugated asbestos boards	mil.conv.plates	18.9	1.0	30.1	1.5	42.9	1.9	45.6	2.1	35.7	1.6	12.7	0.7
Filament lamps	mln pieces	4.7	0.2	0.3	0.0	12.4	0.9	22.7	1.6	15.4	1.1	15.1	1.1
Other mineral materials			0.7		0.7		0.8		1.0		1.0		0.4
Gyps	thou tons	1 001.0	0.6	595.0	0.9	525.0	0.5	230.2	0.8	210.0	0.7	55.8	0.1
Sugar	thou tons	1.5	0.5	0.0	0.0	—	—	0.8	0.2	0.3	0.1	—	—
Spare parts for machinery & equipment			1.5		2.7		2.9		0.2		0.2		0.1
Motor cars	pieces	200.0	1.1	182.0	1.0	37.0	0.2	15.0	0.2	6.0	0.1	29.0	0.5
Glass, casted and rolled	mil. sq. m	0.1	0.2	0.0	0.1	—	—	0.1	0.1	0.0	0.0	0.0	0.1
Other special purpose equipment			0.4		0.4		0.4		0.1		0.1		0.0
Tractors	pieces	8.0	0.0	176.0	2.1	27.0	0.2	11.0	0.1	9.0	0.1	3.0	0.2
Tea	tons	45.9	0.1	94.5	0.2	8.4	0.0	84.3	0.1	58.2	0.1	140.0	0.2
Other communication equipment			—		0.0		0.0		0.0		0.0		—
Wheat flour	thou tons	10.5	2.4	4.0	0.7	0.1	0.0	0.1	0.0	0.1	0.0	—	—
Trucks	pieces	18.0	0.2	16.0	0.1	33.0	0.4	2.0	0.0	1.0	0.0	6.0	0.0
Other chemical products			—		—		0.0		0.0		0.0		0.0
Diesel engines	pieces	—	—	65.0	1.0	49.0	0.7	1.0	0.0	1.0	0.0	—	—
Other special cars	pieces	—	—	—	—	2.0	0.0	2.0	0.0	1.0	0.0	1.0	0.1

Table I.19: Export of Goods to Belarus

Products	unit of measurement	1999		2000		2001		2002		9 mon.02		9 mon.03	
		in kind	mil. US\$	in kind	mil. US\$	in kind	mil. US\$	in kind	mil. US\$	in kind	mil. US\$	in kind	mil. US\$
<b>Total</b>			<b>4.9</b>		<b>3.0</b>		<b>3.2</b>		<b>1.3</b>		<b>0.9</b>		<b>1.3</b>
Tobacco	thou tons	2.2	1.8	2.5	2.0	2.4	1.8	1.0	0.5	0.8	0.4	0.9	0.6
Cotton fiber, uncombed	thou tons	0.6	0.5	0.2	0.2	0.7	0.8	0.5	0.4	0.2	0.1	0.2	0.2
Other ferrous metals products			0.6		0.4		0.1		0.2		0.2		0.1
Other seeds	thou tons	0.1	0.5	0.0	0.1	0.0	0.1	0.0	0.1	0.0	0.1	—	—
Low-voltage equipment			0.1		0.1		0.1		0.0		0.0		0.0

Table I.20: Export of Goods to Switzerland

Products	unit of measurement	1999		2000		2001		2002		9 mon.02		9 mon.03	
		in kind	mil. US\$	in kind	mil. US\$	in kind	mil. US\$	in kind	mil. US\$	in kind	mil. US\$	in kind	mil. US\$
<b>Total</b>			<b>18.1</b>		<b>34.1</b>		<b>124.2</b>		<b>96.4</b>		<b>82.2</b>		<b>49.9</b>
Precious metals			17.7		33.5		124.1		96.0		81.8		49.8
Cotton fiber	thou tons	0.2	0.2	0.5	0.6	—	—	—	—	—	—	—	—

Table I.21: Export of Goods to China

Products	unit of measurement	1999		2000		2001		2002		9 mon.02		9 mon.03	
		in kind	mil. US\$	in kind	mil. US\$	in kind	mil. US\$	in kind	mil. US\$	in kind	mil. US\$	in kind	mil. US\$
<b>Total</b>			<b>25.3</b>		<b>44.1</b>		<b>19.4</b>		<b>41.1</b>		<b>32.9</b>		<b>18.5</b>
Animal hides <sup>1</sup>	thou pieces	289.2	2.3	403.1	3.7	886.7	5.9	906.8	15.0	770.6	13.4	16.1	0.4
Aluminium wastes and scrap	thou tons	36.5	13.5	40.7	18.5	3.5	1.9	9.0	4.2	7.4	3.5	6.3	3.3
Ferrous metal wastes and scarp	thou tons	0.6	0.0	29.1	2.2	105.9	4.2	193.6	3.3	155.9	2.7	188.7	2.7
Primary aluminium alloys	thou tons	4.0	2.2	0.3	0.1	0.2	0.2	3.7	2.4	2.8	1.7	1.7	1.6
Copper wastes and scarp	thou tons	4.8	3.1	7.3	4.9	0.8	0.7	2.5	1.4	1.9	1.1	2.0	0.4
Washed wool	thou tons	—	—	0.3	0.4	0.2	0.2	0.7	1.0	0.6	0.8	0.8	0.8
Greasy wool	thou tons	0.2	0.2	0.6	0.3	0.2	0.1	0.1	0.1	0.1	0.1	0.0	0.0
Other tyres			—		—		0.0		—		—		4.3
Cotton fiber	thou tons	—	—	0.0	0.0	—	—	—	—	—	—	0.2	0.2

<sup>1</sup> NBKR estimates are specified in kind

Table I.22 Export of Goods to USA

Products	unit of measurement	1999		2000		2001		2002		9 mon.02		9 mon.03	
		in kind	mil. US\$	in kind	mil. US\$	in kind	mil. US\$	in kind	mil. US\$	in kind	mil. US\$	in kind	mil. US\$
<b>Total</b>			<b>11.2</b>		<b>2.8</b>		<b>7.1</b>		<b>36.1</b>		<b>28.1</b>		<b>5.6</b>
Kerosene	thou tons	—	—	0.0	0.0	0.6	0.2	72.6	27.0	56.6	21.1	11.5	4.3
Products of non-organic chemistry			0.0		0.0		5.7		7.2		5.6		0.3
Ready-made garments			0.1		1.1		0.9		0.8		0.6		0.6
Other precious metal products			—		0.5		0.1		0.1		0.1		—
Other instruments and devices			0.4		0.5		0.0		0.0		0.0		—

Table I.23: Export of Goods to Turkey

Products	unit of measurement	1999		2000		2001		2002		9 mon.02		9 mon.03	
		in kind	mil. US\$	in kind	mil. US\$	in kind	mil. US\$	in kind	mil. US\$	in kind	mil. US\$	in kind	mil. US\$
<b>Total</b>			<b>4.6</b>		<b>7.2</b>		<b>13.8</b>		<b>16.4</b>		<b>10.7</b>		<b>6.3</b>
Animal hides <sup>1</sup>	thou pieces	32.8	0.1	733.5	0.9	765.6	1.2	1 263.6	2.7	903.5	1.9	478.0	0.6
Other fresh vegetables	thou tons	1.5	0.3	2.1	0.8	9.9	4.0	7.6	2.5	5.9	1.9	3.4	1.1
Nuts	tons	47.8	0.0	1 014.9	0.4	777.2	0.3	2 895.2	2.3	1 214.8	1.0	907.7	1.2
Tractors	pieces	—	—	87.0	0.5	341.0	5.4	173.0	2.2	172.0	2.2	—	—
Cotton fiber	thou tons	1.2	1.0	0.9	0.8	0.5	0.4	3.1	2.0	2.1	1.3	0.6	0.5
Other communication equipment			—		0.1		—		1.3		—		—
Kerosene	thou tons	1.2	0.4	0.5	0.2	1.8	0.7	1.7	0.6	1.4	0.5	4.6	1.5
Motor vehicles	pieces	306.0	1.2	335.0	1.5	62.0	0.5	57.0	0.6	57.0	0.6	3.0	0.0
Wool yarn	thou tons	0.1	0.3	—	—	—	—	0.1	0.3	0.1	0.3	0.0	0.0
Hand tools			0.0		0.1		0.0		0.1		0.1		0.1
Other means of transport			0.0		0.1		0.3		0.1		0.1		0.0
Other seeds	thou tons	2.5	0.4	1.1	0.2	0.4	0.1	0.2	0.1	0.1	0.0	0.2	0.1
Other machinery for repairing (keeping) roads	pieces	—	—	—	—	2.0	0.1	2.0	0.0	2.0	0.0	—	—
Leather made of animal hides	square metre	—	—	0.0	0.0	9.2	0.4	0.0	0.0	—	—	—	—
Timber	tons	—	—	0.1	0.0	0.1	0.1	0.0	0.0	0.0	0.0	0.0	0.0
Trucks	pieces	1.0	0.0	150.0	0.8	—	—	—	—	—	—	—	—
Other fertilizers	thou tons	—	—	—	—	—	—	0.0	0.0	0.0	0.0	0.0	0.1
Other tires			—		—		—		—		—		0.5

<sup>1</sup> NBKR estimates are specified in kind

Table I.24: Export of Goods to Germany

Products	unit of measurement	1999		2000		2001		2002		9 mon.02		9 mon.03	
		in kind	mil. US\$	in kind	mil. US\$	in kind	mil. US\$	in kind	mil. US\$	in kind	mil. US\$	in kind	mil. US\$
<b>Total</b>			<b>148.2</b>		<b>144.6</b>		<b>94.4</b>		<b>1.8</b>		<b>1.5</b>		<b>1.6</b>
Raw tobacco	thou tons	0.0	0.0	169.6	0.2	0.2	0.0	0.3	0.4	0.3	0.4	0.2	0.3
Other fresh vegetables	tons	—	—	28.7	0.2	19.1	0.3	0.1	0.3	0.0	0.3	0.2	0.1
Vegetable waxes	tons	—	—	6.8	0.1	—	—	0.0	0.2	0.0	0.2	0.0	0.1
Ferrous metals cisterns, butts, boxes	tons	11.2	0.0	12.8	0.0	—	—	2.2	0.1	1.2	0.1	—	—
Ferrous metal wastes and scarp	thou tons	0.3	0.1	0.3	0.2	0.3	0.1	0.5	0.1	0.5	0.1	0.4	0.2
Precious metals			144.0		141.2		91.8		—		—		—
Spare parts, accessories for machinery			0.0		—		0.0		—		—		—

Table I.25: Export of Goods to United Kingdom

Products	unit of measurement	1999		2000		2001		2002		9 mon.02		9 mon.03	
		in kind	mil. US\$	in kind	mil. US\$	in kind	mil. US\$	in kind	mil. US\$	in kind	mil. US\$	in kind	mil. US\$
<b>Total</b>			<b>12.4</b>		<b>18.8</b>		<b>14.1</b>		<b>0.9</b>		<b>0.8</b>		<b>0.1</b>
Other products of non-organic chemistry			0.4		0.6		0.5		0.3		0.3		—
Leather made of animal hides	square metre	—	—	—	—	—	—	0.1	0.2	0.1	0.2	—	—
Kerosene	thou tons	0.2	0.1	0.1	0.0	0.2	0.1	0.1	0.0	0.1	0.0	0.1	0.0
Non-organic chemical products	thou tons	—	—	0.3	4.6	0.1	2.7	—	—	—	—	—	—
Other instruments and devices			0.0		0.0		0.0		0.0		0.0		0.0

## Tables I.26 - I.33: Import of Basic Goods by Countries

Table I.26: Import of Goods from Russia

Products	unit of measurement	1999		2000		2001		2002		9 mon.02		9 mon.03	
		in kind	mil. US\$	in kind	mil. US\$	in kind	mil. US\$	in kind	mil. US\$	in kind	mil. US\$	in kind	mil. US\$
<b>Total</b>			<b>109.4</b>		<b>132.6</b>		<b>85.1</b>		<b>116.7</b>		<b>80.3</b>		<b>119.4</b>
Kerosene	thou tons	11.9	2.0	6.0	1.3	4.4	1.1	22.5	7.8	13.7	4.7	12.5	4.2
Vehicle gasoline	thou tons	100.7	18.9	34.2	9.9	6.9	1.4	46.3	6.9	39.2	5.4	57.1	11.0
Truck tyres	thou pieces	27.9	1.2	39.9	2.4	42.5	2.3	95.0	4.4	59.4	2.7	86.2	5.1
Paper and cardboard	thou tons	3.9	2.0	5.6	3.2	6.0	3.0	6.9	3.3	4.8	2.3	3.1	1.4
Sugar	thou tons	6.6	2.2	5.5	1.7	0.4	0.2	13.1	3.3	11.0	2.7	3.2	1.2
Lacquer paint goods			1.9		2.7		2.3		3.1		1.9		3.4
Chocolate	thou tons	0.6	1.6	0.9	2.0	1.2	2.0	1.8	3.1	1.1	1.5	1.2	2.5
Other ferrous metals products			3.6		4.3		4.3		3.1		2.2		2.6
Other products of ferrous metallurgy			0.6		0.8		0.6		3.1		0.3		1.1
Heavy distillates (diesel fuel)	thou tons	7.3	1.5	0.7	0.1	1.1	0.3	14.0	3.0	5.8	1.0	11.9	3.5
Other petroleum products			1.2		2.4		2.8		2.9		2.6		1.3
Beer	thou litres	1 450.0	0.9	3 323.3	2.4	4 363.2	2.4	5 860.6	2.9	4 764.9	2.4	8 702.8	4.1
Medicaments			1.6		3.0		2.6		2.8		2.1		4.2
Other non-organic compounds			1.0		0.7		1.0		2.5		1.3		1.4
Rods, angles, shaped sections	thou tons	6.5	1.2	8.7	2.4	8.4	1.8	9.8	2.3	7.7	1.8	8.3	3.4
Vehicles cars	pieces	2 037.0	2.9	2 158.0	6.2	1 535.0	4.2	633.0	2.3	466.0	1.7	618.0	2.3
Motor vehicles tyres	thou pieces	172.8	1.8	225.9	3.3	159.1	1.8	195.7	2.1	123.6	1.4	175.7	2.2
Rolled ferrous metals	thou tons	2.6	1.1	2.4	1.4	3.7	1.8	4.5	2.0	3.5	1.6	4.3	2.1
Timber	thou cub m	30.1	1.6	42.0	2.2	29.9	1.5	36.4	2.0	25.1	1.3	36.2	2.5
Nitrogen fertilizers	thou tons	11.3	0.9	18.9	1.7	18.5	1.3	20.9	1.7	16.0	1.3	20.7	2.2
Detergents			0.9		1.7		1.8		1.7		1.2		1.5
Other lubricating oils			2.2		2.2		1.4		1.7		1.3		1.7
Other organic compounds			2.0		3.0		1.1		1.5		1.1		0.4
Fiber board	thou cub m	1 136.6	0.5	1 954.7	1.0	1 897.7	0.9	2 493.9	1.2	1 735.4	0.9	2 040.8	1.3
Other chemical products			1.3		1.1		0.9		1.2		0.8		0.9
Cosmetic			0.2		0.5		0.7		1.2		0.8		1.0
Spare parts, accessories for machinery			3.0		6.6		2.6		1.1		0.8		3.0
Wood shaving boards	thou cub m	22.0	0.6	26.2	1.0	10.2	0.7	65.5	1.0	5.6	0.6	7.5	1.1
Laundry soap			0.6		0.7		0.8		1.0		0.4		1.7
Autobus	pieces	54.0	0.3	61.0	0.2	50.0	2.2	589.0	1.0	397.0	0.6	566.0	1.5
Foil			0.2		0.4		1.1		0.9		0.7		0.3
Newsprint	thou tons	2.9	1.2	3.0	1.7	2.8	1.4	2.1	0.9	1.4	0.6	1.9	0.7

Table I.27: Import of Goods from Kazakhstan

Products	unit of measurement	1999		2000		2001		2002		9 mon.02		9 mon.03	
		in kind	mil. US\$	in kind	mil. US\$	in kind	mil. US\$	in kind	mil. US\$	in kind	mil. US\$	in kind	mil. US\$
<b>Total</b>			<b>72.7</b>		<b>57.4</b>		<b>81.8</b>		<b>123.9</b>		<b>87.7</b>		<b>114.1</b>
Kerosene	thou tons	7.5	1.6	3.9	1.1	26.2	8.0	92.3	30.0	68.5	22.0	97.9	30.7
Other coal	thou tons	1 002.4	18.1	716.1	10.5	331.5	6.1	870.2	13.5	603.5	7.6	555.2	12.5
Vehicle gasoline	thou tons	35.4	6.8	34.6	7.3	64.1	13.9	73.0	12.0	48.8	7.4	77.0	15.7
Wheat	thou tons	96.4	7.8	119.4	9.4	74.3	6.7	157.7	11.6	125.8	9.5	61.3	4.4
Heavy distillates (diesel fuel)	thou tons	49.6	8.4	21.6	5.5	39.4	10.1	33.7	7.2	25.2	5.3	34.2	6.5
Cigarettes and cigars	mlrd pieces	0.5	4.2	0.5	5.3	0.6	6.2	0.4	5.3	0.3	3.7	0.4	4.9
Rolled ferrous metals	thou tons	2.3	0.6	6.0	1.7	6.1	1.4	6.2	1.9	4.1	1.1	5.6	2.5
Asbestos	thou tons	18.2	2.7	9.0	1.0	13.2	1.2	14.1	1.8	9.6	1.2	15.4	2.5
Gyps	thou tons	74.5	0.9	27.5	0.3	119.3	1.4	507.4	1.1	296.4	0.6	659.0	1.3
Wheat flour	thou tons	8.3	1.4	2.8	0.3	1.9	0.2	9.6	1.0	8.7	0.9	3.6	0.5
Liquid fuel (mazut)	thou tons	28.3	1.4	25.9	1.7	4.5	0.3	15.1	0.9	13.8	0.8	34.6	2.1
Maize	thou tons	5.2	0.4	6.2	0.4	9.1	0.8	3.1	0.4	1.3	0.2	1.8	0.2
Cables and copper wire	thou tons	0.1	0.3	0.2	0.4	0.4	0.8	0.2	0.3	0.1	0.2	0.2	0.3
Malt	thou tons	1.3	0.4	2.1	0.7	1.2	0.4	0.9	0.3	0.9	0.3	0.6	0.2
Scums and calx	thou tons	81.5	0.5	93.7	0.4	134.3	0.3	82.5	0.3	63.7	0.2	97.6	0.3
Coal	thou tons	21.0	0.5	3.3	0.0	7.5	0.1	12.3	0.1	6.9	0.1	15.2	0.2



Table I.28: Import of Goods from Uzbekistan

Products	unit of measurement	1999		2000		2001		2002		9 mon.02		9 mon.03	
		in kind	mil. US\$	in kind	mil. US\$	in kind	mil. US\$	in kind	mil. US\$	in kind	mil. US\$	in kind	mil. US\$
<b>Total</b>			<b>50.0</b>		<b>75.1</b>		<b>66.7</b>		<b>60.1</b>		<b>43.0</b>		<b>26.9</b>
Natural gas	mil kub. m.	574.6	33.0	651.9	33.2	665.7	33.2	855.7	41.8	628.1	30.3	462.4	20.6
Electric energy	mil kwh	0.2	0.0	194.8	6.5	287.4	9.6	267.0	8.9	196.4	6.6	0.1	0.0
Vehicle gasoline	thou tons	21.9	3.1	27.5	6.6	30.4	6.7	10.1	1.9	7.0	1.2	1.3	0.3
Cement	thou tons	35.7	0.7	50.4	1.0	40.9	0.8	55.3	1.1	38.3	0.7	69.2	1.6
Heavy distillates (diesel fuels)	thou tons	20.4	2.4	47.1	8.0	46.9	7.6	7.0	1.0	4.7	0.8	3.2	0.5
Nitrogen fertilizers	thou tons	5.6	0.4	7.4	0.6	0.6	0.0	6.8	0.5	4.1	0.3	10.8	0.8
Liquid fuels (mazut)	thou tons	2.8	0.2	39.5	2.4	15.9	0.9	2.6	0.1	2.6	0.1	—	—
Other lubricating oils	thou tons	0.1	0.0	0.5	0.1	2.5	0.6	0.5	0.1	0.3	0.1	0.5	0.1
Kerosene	thou tons	10.0	1.6	0.6	0.2	0.7	0.2	0.2	0.1	0.2	0.1	0.0	0.0
Other organic compounds			0.1		—		0.1		0.1		0.1		0.0
Cotton-seed oil	thou tons	0.0	0.0	—	—	—	—	0.0	0.0	0.0	0.0	—	—
Crude oil	thou tons	17.5	1.2	17.4	2.6	—	—	—	—	—	—	—	—

Table I.29: Import of Goods to Belarus

Products	unit of measurement	1999		2000		2001		2002		9 mon.02		9 mon.03	
		in kind	mil. US\$	in kind	mil. US\$	in kind	mil. US\$	in kind	mil. US\$	in kind	mil. US\$	in kind	mil. US\$
<b>Total</b>			<b>5.3</b>		<b>3.9</b>		<b>6.0</b>		<b>5.1</b>		<b>4.2</b>		<b>4.5</b>
Tractors	<i>pieces</i>	15.0	0.3	—	—	180.0	2.3	420.0	2.0	409.0	1.8	122.0	1.2
Medicaments			0.1		0.2		0.3		0.3		0.3		0.4
Refrigerating & freezing equipment			0.0		0.0		0.1		0.3		0.3		0.2
Trucks	<i>pieces</i>	7.0	0.5	38.0	0.8	5.0	0.1	9.0	0.2	9.0	0.2	10.0	0.2
Wood shaving boards	<i>thou cub m</i>	1.1	0.2	0.6	0.2	1.0	0.2	0.9	0.2	0.4	0.1	0.4	0.1
Other machinery and mechanism	<i>pieces</i>	2.0	0.0	6.0	0.1	26.0	0.7	4.0	0.1	4.0	0.1	4.0	0.4
Furniture			0.0		0.1		0.1		0.1		0.1		0.1
Motor vehicles tyres	<i>thou pieces</i>	—	—	—	—	2.6	0.0	9.6	0.1	5.8	0.1	11.2	0.2
Synthetic & manmade fibre bands	<i>thou tons</i>	0.0	0.0	0.1	0.1	0.0	0.0	0.1	0.1	0.1	0.1	0.0	0.0
Refrigerator	<i>pieces</i>	3 029.0	0.7	1 260.0	0.3	1 428.0	0.3	86.0	0.0	63.0	0.0	23.0	0.0
Motor vehicles	<i>pieces</i>	13.0	0.0	4.0	0.0	6.0	0.0	0.0	0.0	0.0	0.0	1.0	0.0
Special cars	<i>pieces</i>	—	—	10.0	0.4	7.0	0.2	—	—	—	—	—	—
Stockinet			0.1		0.1		0.1		—		—		0.0
Sugar	<i>thou tons</i>	4.5	1.5	0.5	0.1	0.2	0.1	—	—	—	—	0.5	0.2
Facing glazed tiles	<i>mil. sq. m</i>	74.2	0.4	59.0	0.2	50.8	0.2	10.6	0.0	10.6	0.0	—	—

Table I. 30: Import of Goods from China

Products	unit of measurement	1999		2000		2001		2002		9 mon.02		9 mon.03	
		in kind	mil. US\$	in kind	mil. US\$	in kind	mil. US\$	in kind	mil. US\$	in kind	mil. US\$	in kind	mil. US\$
<b>Total</b>			<b>36.9</b>		<b>36.9</b>		<b>48.5</b>		<b>59.0</b>		<b>43.9</b>		<b>49.9</b>
Textile	<i>mil linear m</i>	31.7	6.7	35.6	7.3	22.6	4.7	22.4	5.4	15.9	4.2	21.5	6.0
Non-ferrous compounds	<i>thou tons</i>	4.3	5.3	4.0	5.6	6.1	7.8	4.6	5.4	3.4	3.4	2.4	2.8
Equipment for paper and cardboard production			0.0		0.2		1.1		3.8		3.8		0.3
Knitted upper clothes	<i>thou pieces</i>	1 828.3	0.9	2 963.7	1.3	2 893.9	1.5	6 340.1	3.1	4 091.7	2.0	8 262.1	3.6
Other knitted garments			1.3		1.3		1.2		3.0		2.2		3.3
Footwear of leather or artificial leather	<i>thou pair</i>	3 410.8	1.4	2 445.8	1.1	3 295.7	1.9	4 715.4	2.6	4 323.0	2.4	52.8	0.0
Ready-made garments			1.9		0.9		0.8		2.6		1.5		1.7
Yarn made of synthetic & artificial			0.5		0.3		1.3		2.3		1.5		1.8
Knitted underwear	<i>thou pieces</i>	6 841.9	0.6	7 047.1	0.7	5 531.6	0.8	12 075.0	1.6	9 728.3	1.2	2 922.5	0.9
Other communication equipment			0.0		0.5		1.9		1.3		1.2		4.1
Other plastic products			0.2		0.4		1.8		1.2		1.0		0.9
Telephone, teletype			0.2		0.1		0.7		1.2		1.2		0.1
Hydrate of sodium			0.3		0.2		0.6		1.1		0.7		0.7
Sport footwear	<i>thou pair</i>	1 923.7	0.7	260.0	0.1	554.5	0.2	1 767.9	1.0	377.1	0.3	6 338.4	3.1
Legwear garment	<i>mil pair</i>	30.2	0.6	...	0.7	...	0.5	...	0.9	...	0.8	...	0.0
Other products of ferrous metals			3.4		1.1		0.5		0.7		0.7		0.9
Tobacco non-fermented	<i>thou tons</i>	0.7	1.1	1.0	1.4	0.7	1.1	0.5	0.7	0.5	0.7	—	—
Tungsten and tungsten goods			0.0		0.0		0.7		0.6		0.5		0.7
Molybdenum & molybdenum goods			0.0		0.0		0.5		0.6		0.4		—
Other special purpose equipment			0.1		0.0		0.8		0.6		0.5		0.2
Other footwear			0.4		0.9		0.1		0.6		0.5		0.1
Polyethylene bags			0.2		0.8		1.4		0.5		0.4		0.5
Nitrogen fertilizers			0.2		0.1		0.6		0.3		0.2		0.1
Jute fiber	<i>thou tons</i>	0.2	0.1	0.7	0.4	1.0	0.5	0.4	0.2	0.3	0.2	0.5	0.2
Other instruments and devices			0.2		0.5		2.1		0.1		0.1		0.1
Equipment for light industry			3.0		0.7		0.1		0.0		0.0		0.0
Equipment with electrical warming			0.0		0.1		0.1		0.0		—		0.0
Semi-manufactures footwear			0.5		0.8		1.1		0.5		0.4		0.2

Table I.31: Import of Goods from USA

Products	unit of measurement	1999		2000		2001		2002		9 mon.02		9 mon.03	
		in kind	mil. US\$	in kind	mil. US\$	in kind	mil. US\$	in kind	mil. US\$	in kind	mil. US\$	in kind	mil. US\$
<b>Total</b>			<b>54.2</b>		<b>53.8</b>		<b>26.8</b>		<b>47.4</b>		<b>31.8</b>		<b>25.7</b>
Medicaments			8.0		13.9		14.1		16.9		10.7		3.5
Second-hand clothes			0.2		2.4		1.4		3.3		2.3		2.0
Wheat flour	<i>thou tons</i>	0.5	0.1	0.0	0.0	—	—	6.4	2.9	6.4	2.9	0.3	0.2
Ready-made garments, excluding knitted clothes			2.2		1.0		0.5		2.3		1.5		0.7
Medical instruments and devices			2.4		1.9		1.5		1.8		0.3		0.7
Other optical instruments and devices			1.1		0.5		0.2		1.5		0.3		0.1
Meat and tinned meat products	<i>thou tons</i>	0.8	0.3	1.8	0.8	1.3	0.7	1.8	1.1	1.0	0.6	3.6	2.2
Wheat	<i>thou tons</i>	31.4	7.7	95.3	21.8	—	—	0.1	0.2	0.0	0.0	—	—
Other machinery for repairing (keeping) roads	<i>pieces</i>	—	—	—	—	—	—	3.0	0.7	2.0	0.7	—	—
Other vegetable oils	<i>thou tons</i>	5.1	4.5	0.5	0.5	—	—	0.7	0.6	0.7	0.6	2.6	3.0
Other footwear			0.1		0.1		0.1		0.5		0.4		0.2
Tarpaulin	<i>thou tons</i>	0.0	0.4	—	—	0.0	0.9	0.0	0.4	0.0	0.4	0.0	0.1
Motor vehicles	<i>pieces</i>	5.0	0.1	13.0	0.3	20.0	0.5	14.0	0.4	14.0	0.4	2.0	0.1
Spare parts, accessories for machinery			0.3		0.7		1.8		0.3		0.1		1.0
Rice	<i>thou tons</i>	0.9	0.5	—	—	—	—	0.5	0.2	0.5	0.2	0.5	0.2
Ready-made garments			0.9		0.4		0.3		0.1		0.1		0.2
Sunflower-seed oil	<i>thou tons</i>	0.0	0.0	0.0	0.0	0.0	0.0	0.1	0.1	0.1	0.1	—	—
Cigarettes and cigars	<i>mil pieces</i>	0.1	0.7	0.0	0.4	0.0	0.1	0.0	0.0	0.0	0.0	0.0	0.0
Airplane	<i>pieces</i>	—	—	—	—	—	—	—	—	—	—	1.0	6.0

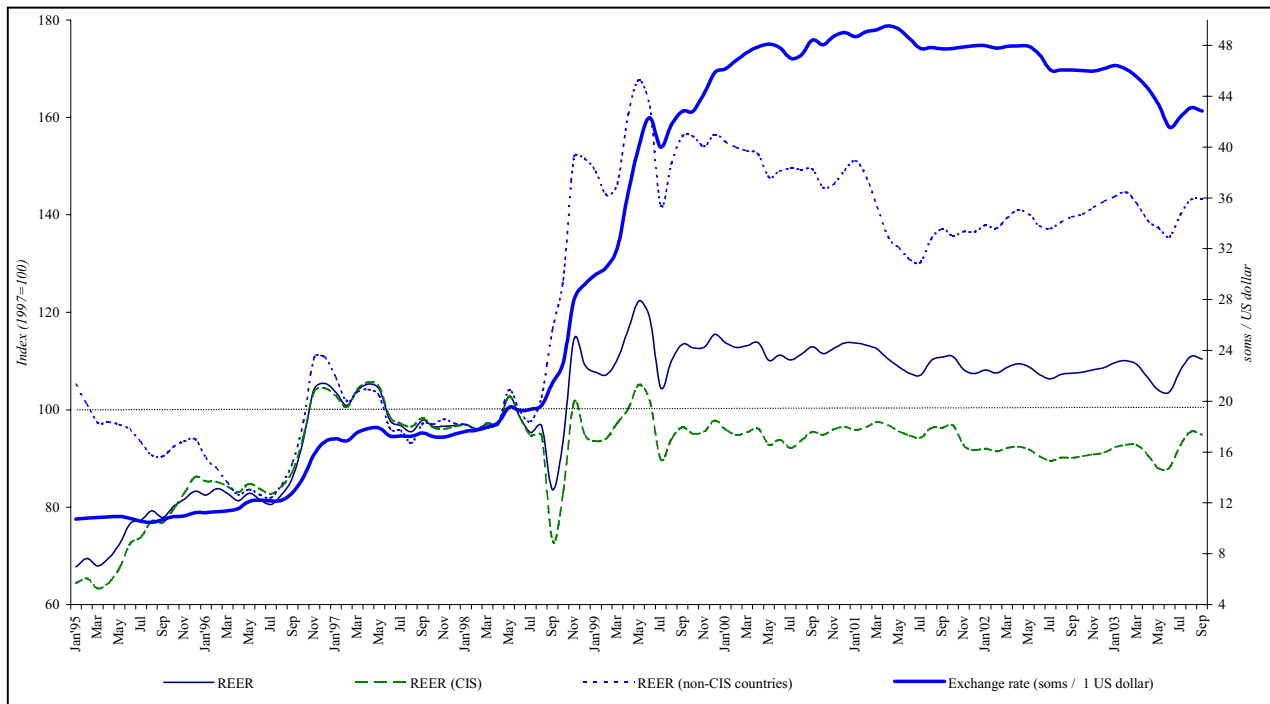
Table I.32: Import of Goods from Germany

Products	unit of measurement	1999		2000		2001		2002		9 mon.02		9 mon.03	
		in kind	mil. US\$	in kind	mil. US\$	in kind	mil. US\$	in kind	mil. US\$	in kind	mil. US\$	in kind	mil. US\$
<b>Total</b>			<b>47.3</b>		<b>25.2</b>		<b>24.3</b>		<b>31.4</b>		<b>20.7</b>		<b>28.1</b>
Autobus	<i>pieces</i>	18.0	0.2	29.0	0.1	3.0	0.0	6 639.0	8.9	4 213.0	5.7	7 927.0	8.9
Medical facilities			—		0.6		0.4		2.6		0.2		3.3
Other special equipment			0.7		1.1		1.0		1.5		1.4		0.7
Combines	<i>pieces</i>	40.0	2.0	12.0	0.2	44.0	0.5	54.0	1.2	52.0	1.1	—	—
Cosmetic			0.4		0.6		1.1		1.1		0.7		1.0
Medicaments			1.5		0.6		0.5		0.9		0.4		0.8
Other acids			0.4		0.6		0.3		0.7		0.7		0.5
Equipment with electric and nonelectrical heating unit			—		0.1		0.0		0.7		0.6		0.1
Other tyres	<i>thou pieces</i>	132.3	0.3	201.0	0.4	248.8	0.7	210.8	0.6	164.1	0.4	177.0	0.5
Other plastic products			0.7		0.5		0.6		0.5		0.4		0.3
Equipmet for tobacco processing			—		1.0		0.6		0.5		0.5		0.2
Other paper goods			0.1		0.1		0.4		0.4		0.4		0.1
Aluminium goods			0.5		0.4		0.5		0.4		0.3		0.5
Spare parts, accessories for machinery			1.3		0.3		0.5		0.3		0.2		0.3
Other communication equipment			—		0.1		0.2		0.3		0.3		0.3
Sugar	<i>thou tons</i>	0.4	0.2	0.0	0.0	3.6	0.8	1.3	0.3	1.3	0.3	1.0	0.3
Special cars	<i>pieces</i>	—	—	4.0	0.4	2.0	0.0	1.0	0.3	—	—	3.0	0.0
Other special electric machines and devices			—		0.1		0.1		0.2		0.0		0.0
Other instruments and apparatus			—		0.1		0.2		0.2		0.2		0.2
Other chemical products(drying oil & etc.)			—		0.1		0.2		0.2		0.1		0.0
Motor vehicles	<i>pieces</i>	2 584.0	2.3	7 621.0	4.6	10 221.0	6.4	60.0	0.5	40.0	0.4	56.0	0.7
Spare parts and equipment for vehicles			—		0.2		0.1		0.2		0.1		0.3
Cigarettes and cigars	<i>mil pieces</i>	0.1	1.7	0.2	2.3	0.1	0.9	0.0	0.1	0.0	0.1	0.0	0.1
Lacquer paint goods	<i>thou tons</i>	—	—	0.1	0.1	0.1	0.2	0.1	0.1	0.0	0.1	0.0	0.0
Motor vehicles tyres	<i>thou pieces</i>	—	—	4.9	0.1	1.9	0.1	2.3	0.1	2.1	0.1	2.2	0.1
Other products of ferrous metals			0.8		0.2		0.1		0.1		0.0		0.1
Centrifugal pumps	<i>pieces</i>	322.0	0.2	1 064.0	0.3	663.0	0.1	474.0	0.0	196.0	0.0	455.0	0.0

Table I.33: Import of Goods from Turkey

Products	unit of measurement	1999		2000		2001		2002		9 mon.02		9 mon.03	
		in kind	mil. US\$	in kind	mil. US\$	in kind	mil. US\$	in kind	mil. US\$	in kind	mil. US\$	in kind	mil. US\$
<b>Total</b>			<b>23.1</b>		<b>26.8</b>		<b>15.8</b>		<b>17.0</b>		<b>12.3</b>		<b>20.1</b>
Knitted upper clothes			0.1		0.6		1.0		1.9		1.3		1.4
Other communication equipment			0.0		0.1		0.2		1.1		1.1		0.0
Knitted underwear			0.1		0.6		0.7		0.8		0.6		0.6
Furniture of all types			0.2		1.4		0.6		0.8		0.5		0.6
Other plastic products			0.3		0.7		0.4		0.5		0.4		0.8
Paper & cardboard containers			0.2		0.3		0.7		0.4		0.3		0.4
Other confectionery			0.1		0.1		0.3		0.4		0.4		0.3
Electric transformes	<i>thou pieces</i>	0.2	2.0	0.1	0.0	0.1	0.0	0.0	0.4	0.0	0.0	0.1	1.3
Ferrous metals constructions	<i>thou tons</i>	0.9	1.9	0.2	0.3	0.0	0.1	0.1	0.3	0.0	0.0	0.7	0.8
AC electric motors	<i>pieces</i>	132.0	0.5	172.0	0.7	206.0	0.5	161.0	0.3	152.0	0.2	23.0	0.2
Detergents	<i>thou tons</i>	1.3	0.9	0.7	0.5	0.3	0.2	0.3	0.2	0.2	0.2	0.4	0.3
Other paper goods			0.7		0.8		0.4		0.2		0.2		0.2
Bread, wheat confectionery goods	<i>thou tons</i>	0.4	0.1	0.2	0.1	0.3	0.1	0.5	0.2	0.3	0.1	0.0	0.0
Spare parts for machinery and equipment			0.4		0.8		0.6		0.2		0.2		0.1
Spare parts and equipment for motor vehicles			0.4		0.2		0.2		0.2		0.1		0.1
Other ferrous metals products			0.3		0.3		0.1		0.2		0.2		0.4
Tea	<i>tons</i>	85.9	0.1	36.2	0.1	143.6	0.2	227.2	0.1	156.0	0.1	291.8	0.2
Chocolate	<i>thou tons</i>	0.8	0.3	0.6	0.2	0.2	0.1	0.2	0.1	0.1	0.1	0.0	0.0
Other agricultural equipment			0.4		0.7		0.1		0.1		0.1		0.1
Polymer containers			0.3		0.2		0.1		0.1		0.1		0.0
Refrigerating equipment			0.1		0.1		0.1		0.1		0.1		0.3
Paper & cardboard	<i>thou tons</i>	0.2	0.3	0.2	0.3	0.1	0.1	0.1	0.1	0.1	0.1	0.0	0.0
Other woodwork			0.0		0.9		0.2		0.0		0.0		0.1
Ready-made garments of all types			0.6		0.5		0.5		0.0		0.0		0.0
Glass container (bottles, jars)	<i>mil pieces</i>	1.8	0.6	2.0	0.1	2.3	0.0	1.4	0.0	1.0	0.0	—	—

**Chart I.1 Exchange Rate and the Real Effective Exchange Rate Index  
( total, with CIS and non CIS countries)**



**Table I.28: Real and Nominal Effective Exchange Rate Indices:**  
**total, by CIS countries and non-CIS countries**  
*(basic period - May 1997)*

	<i>REER</i>	<i>NEER</i>	<i>REER (CIS)</i>	<i>NEER (CIS)</i>	<i>REER (non-CIS countries)</i>	<i>NEER (non-CIS countries)</i>	<i>Exchange rate (soms / 1 US dollar)</i>
January'95	67.8	105.2	64.4	117.1	105.1	65.3	10.7389
February	69.5	100.7	65.4	110.8	101.1	67.1	10.8000
March	67.9	96.1	63.3	104.1	97.4	69.2	10.8525
April	69.5	93.0	64.5	99.6	97.5	70.8	10.9022
May	72.4	92.0	67.4	98.3	96.9	71.0	10.9400
June	76.7	93.1	72.4	99.9	95.9	70.8	10.7867
July	77.3	92.0	73.9	99.1	93.3	69.1	10.5578
August	79.2	93.1	77.1	101.3	90.7	68.0	10.4700
September	77.9	89.9	76.8	96.4	90.5	69.3	10.6775
October	80.2	89.7	79.6	95.3	92.4	71.5	10.9288
November	81.6	85.9	82.8	90.0	93.5	71.6	10.9744
December	83.3	84.3	86.2	87.5	93.9	72.4	11.2338
January'96	82.5	82.0	85.3	84.5	90.1	71.9	11.2378
February	83.8	81.9	85.2	84.4	87.8	72.4	11.3156
March	82.8	81.3	84.3	83.7	85.0	72.6	11.3688
April	81.3	81.4	83.1	83.6	82.6	73.3	11.5600
May	82.9	84.2	84.8	86.2	83.7	76.9	12.1188
June	81.6	83.7	83.7	85.4	82.5	77.3	12.2244
July	80.5	82.6	82.7	84.1	81.9	77.0	12.1563
August	82.6	82.3	84.3	83.6	84.8	77.6	12.2010
September	86.2	85.1	87.5	86.1	89.3	81.2	12.8350
October	93.9	92.0	94.5	93.0	97.6	88.3	14.0289
November	104.3	100.9	103.7	100.8	110.7	100.1	15.8356
December	105.4	105.0	104.4	104.5	110.7	105.3	16.8325
January'97	103.6	104.3	102.8	103.9	106.5	104.6	17.0413
February	100.9	101.2	100.6	100.8	101.8	101.3	16.8782
March	104.0	104.4	104.2	104.3	103.6	104.1	17.5634
April	105.2	105.3	105.7	105.3	104.2	105.0	17.8663
May	104.2	104.5	104.8	104.6	102.8	104.5	17.8857
June	97.8	100.2	98.5	100.4	96.1	99.9	17.2616
July	96.7	99.5	97.2	99.4	95.7	99.6	17.2762
August	95.5	96.9	96.5	97.4	93.2	95.5	17.2475
September	97.9	97.3	98.2	97.5	97.1	96.8	17.5046
October	96.5	95.2	96.4	95.3	97.0	95.1	17.2190
November	96.6	94.4	96.1	94.5	98.0	94.5	17.1888
December	96.7	94.5	96.5	95.1	97.2	93.4	17.4173
January'98	97.0	94.3	96.9	95.1	96.9	92.7	17.6435
February	96.1	93.6	96.0	94.4	96.0	92.2	17.7248
March	97.1	94.1	97.3	95.0	96.3	92.2	17.9777
April	97.0	94.0	97.1	94.5	97.4	93.3	18.3281
May	102.8	99.4	102.7	99.6	104.1	99.2	19.5238
June	98.5	97.3	98.4	97.7	99.6	96.6	19.2572
July	95.3	96.7	94.7	96.8	97.7	96.5	19.3845
August	96.7	94.9	94.7	93.9	102.6	97.8	19.6859
September	83.6	79.8	73.1	70.3	116.6	108.7	21.4430
October	94.0	80.5	83.1	68.7	126.7	117.8	23.0444
November	114.5	96.2	101.6	82.3	152.0	140.4	27.9862
December	109.1	93.7	94.7	78.0	151.5	146.3	29.2252
January'99	107.7	90.9	93.6	74.8	148.9	147.7	29.9584
February	107.2	89.6	94.2	73.5	144.0	146.9	30.5733
March	110.4	91.6	97.3	74.9	146.4	151.6	32.0831



**Table I.34: (continued)**

	<i>REER</i>	<i>NEER</i>	<i>REER (CIS)</i>	<i>NEER (CIS)</i>	<i>REER (non-CIS countries)</i>	<i>NEER (non-CIS countries)</i>	<i>Exchange rate (soms / 1 US dollar)</i>
April'99	116.5	97.8	100.2	77.8	160.7	170.6	36.4737
May	122.4	105.5	105.2	83.1	167.7	185.6	40.1410
June	118.8	108.9	101.9	85.0	162.2	192.8	42.3231
July	104.5	101.9	89.8	78.9	141.9	180.9	39.9855
August	110.1	105.7	94.0	80.6	150.6	191.4	41.7756
September	113.5	106.2	96.4	80.1	156.1	195.5	42.8174
October	112.7	105.8	95.1	78.5	156.1	197.2	42.8478
November	112.9	107.8	95.5	79.7	154.1	198.6	44.2404
December	115.5	110.5	97.8	80.8	156.5	203.3	45.8661
January'00	113.7	109.0	95.9	78.2	155.0	204.4	46.1658
February	112.8	108.6	94.9	77.6	153.8	203.9	46.8496
March	113.2	110.1	95.4	78.8	153.1	204.4	47.4691
April	113.8	110.6	96.1	79.3	152.4	203.8	47.8870
May	110.1	107.4	92.8	76.5	147.8	200.7	48.1138
June	111.2	108.3	93.8	76.9	149.0	204.6	47.8440
July	110.2	104.9	92.1	73.6	149.6	202.7	46.9929
August	111.4	104.4	93.7	73.6	149.3	200.2	47.2735
September	112.9	105.8	95.5	74.7	149.4	201.1	48.4232
October	111.5	104.4	94.8	73.8	145.6	197.9	48.0577
November	112.6	104.9	96.0	74.6	146.4	200.8	48.7261
December	113.7	105.3	96.5	74.4	149.2	206.0	49.0239
January'01	113.7	104.6	95.8	73.0	151.1	209.4	48.7077
February	113.3	104.3	96.5	73.2	147.7	206.1	49.0873
March	112.5	103.1	97.5	72.9	141.6	197.0	49.2613
April	110.4	101.6	96.8	72.2	135.5	189.5	49.5489
May	108.8	101.3	95.6	71.8	133.2	188.8	49.2861
June	107.5	98.6	94.7	70.3	130.9	183.5	48.5289
July	107.1	96.3	94.2	68.9	130.3	179.0	47.7796
August	110.1	96.3	96.2	68.6	135.1	180.3	47.8356
September	110.8	96.0	96.3	68.2	137.1	181.2	47.7412
October	111.0	95.4	96.8	68.1	135.7	178.2	47.7665
November	108.2	92.2	92.6	64.5	136.6	179.3	47.8836
December	107.4	91.9	91.7	63.8	136.5	181.4	47.9665
January'02	108.2	91.9	92.1	63.2	137.8	183.0	47.9893
February	107.6	91.2	91.4	62.7	137.2	180.7	47.7802
March	108.7	91.9	92.1	62.4	139.4	181.4	47.9195
April	109.4	92.3	92.4	62.5	141.0	182.1	47.9610
May	108.9	92.4	91.9	62.5	140.1	182.2	47.9319
June	107.2	91.2	90.4	61.7	137.7	179.4	47.2569
July	106.3	89.0	89.5	60.2	137.2	175.9	46.0705
August	107.3	89.1	90.2	60.3	138.5	175.2	46.0881
September	107.5	89.2	90.1	60.1	139.6	175.8	46.0788
October	107.8	88.5	90.5	59.9	140.2	174.9	46.0127
November	108.2	87.9	90.8	59.6	141.5	176.7	45.9974
December	108.7	87.9	91.2	59.8	142.8	179.6	46.1778
January'03	109.7	88.2	92.3	60.1	143.8	181.8	46.4192
February	110.1	88.0	92.8	60.0	144.6	182.7	46.1189
March	109.3	87.2	92.7	59.7	142.3	178.9	45.5146
April	106.5	85.8	90.6	58.7	138.8	175.6	44.6220
May	104.0	84.6	87.9	57.4	137.3	174.7	43.3566
June	103.7	82.7	88.2	55.7	135.5	170.0	41.5617
July	108.1	84.3	92.7	57.3	140.1	171.2	42.3787
August	110.9	86.3	95.5	58.7	143.1	173.3	43.0904
September	110.4	85.6	94.9	58.5	143.4	172.3	42.8435

**Table I.35: Geographic structure of net inflows of foreign direct investments in the Kyrgyz Republic**  
(in millions of US dollars)

	1999	2000	2001	2002	9 mon.02	9 mon.03
<b>TOTAL</b>	<b>44.4</b>	<b>-2.4</b>	<b>5.0</b>	<b>4.8</b>	<b>1.6</b>	<b>11.6</b>
<b>Non-CIS countries</b>	45.5	-3.7	6.7	-11.8	-5.3	11.8
Great Britain	11.5	-3.8	-1.5	-1.7	0.1	-1.1
Germany	12.1	8.2	18.4	-3.5	2.5	-1.5
India	-1.5	-0.8	0.6	0.3	-0.4	0.1
Iran	-0.1	-0.5	0.1	-0.1	-0.2	-0.1
Ireland	0.0	0.9	-0.1	-0.2	0.0	-0.1
Italy	2.5	-7.5	0.0	-6.2	-6.2	0.0
Canada	4.2	-5.9	-10.1	-9.6	-6.6	4.0
Cyprus	0.0	0.4	0.0	0.1	-0.8	0.0
China	0.7	-2.2	2.1	2.8	2.4	4.5
Korea	0.7	-0.1	-1.1	1.2	0.5	1.5
Malaysia	0.1	3.0	0.1	—	0.0	0.0
Netherlands	0.0	9.2	1.3	-0.9	-0.4	-0.7
USA	7.0	1.5	-3.4	3.9	-2.9	-4.3
Turkey	12.7	-3.3	0.4	4.1	2.4	10.4
Switzerland	-1.7	-0.7	-4.1	-0.2	0.3	-4.5
Japan	0.2	-0.1	—	—	0.0	0.0
<b>CIS Countries</b>	-1.1	1.3	-1.7	16.3	6.9	-0.2
Kazakhstan	-0.7	-0.1	-0.2	3.4	1.5	-2.1
Russia	-0.7	1.0	0.5	11.8	5.4	1.4

**Table I.36: Sectorial structure of net inflows of foreign direct investments in the Kyrgyz Republic**  
(in millions of US dollars)

	1999	2000	2001	2002	9 mon.02	9 mon.03
<b>TOTAL</b>	<b>44.4</b>	<b>-2.4</b>	<b>5.0</b>	<b>4.8</b>	<b>1.6</b>	<b>11.6</b>
Industry	30.8	-3.1	19.7	0.7	2.2	6.3
Agriculture	0.3	0.5	-4.6	0.6	0.4	0.2
Communication	-0.4	-0.1	-1.3	-0.9	-0.2	-0.1
Construction	3.3	1.3	-1.3	-7.8	-5.3	2.7
Trade & catering	1.0	-1.4	-1.8	10.0	6.2	-1.9
Procurement companies	1.8	1.9	-3.6	-4.8	-2.6	-2.6
Information computing service	10.6	—	-1.1	-2.3	-0.9	-0.7
Real estate operations	—	—	-0.6	1.6	0.9	0.0
General commercial activity to provide the activity of the market	1.8	-1.6	-0.6	0.2	0.1	-0.1
Geology, geodesy & hydrometeorological service	2.2	3.9	-0.3	10.4	6.0	-3.3
Other types of material production sphere	—	—	-0.7	0.0	0.1	0.0
Housing and communal services	0.0	-5.1	-0.5	-0.3	0.1	1.8
Public health, physical training & social maintenance	-4.0	2.2	-0.9	-4.6	-4.5	2.0
Education	-0.1	0.1	-0.7	3.3	0.7	6.8
Institutions of culture & art	0.3	0.6	-1.0	0.6	0.4	0.1
Institutions and organizations of science	0.3	-0.1	-0.6	0.1	0.2	-0.1
Finances, credit, insurance & provision of pensions	-1.0	-1.2	5.7	-0.5	-0.8	0.4
Legal services	-1.0	0.0	-0.7	0.0	0.1	0.0

**Table I.37: International reserves (end of period)**

	1999	2000	2001	2002	9 mon.03
Reserves (mil. US dollars)	248.8	261.1	285.2	316.7	360.7
Liquid part of reserves (mil. US dollars)	182.4	204.0	235.9	289.7	332.5
Reserves in months of import of goods and facility (exclud. TA <sup>1</sup> )	4.4	4.9	6.3	5.6	5.9
Liquid part of reserves in months of import of goods and facility (exclud. TA <sup>1</sup> )	3.1	3.7	5.0	5.0	5.3

<sup>1</sup> technical assistance

**Table I.38: External Debt of the Kyrgyz Republic**

	1999	2000	2001	2002	9 mon.03*
ED <sup>1</sup> end-period (mil. US dollars)	1 647.4	1 703.8	1 677.7	1 784.6	1 911.8
ED end-period (per cent of GDP)	134.4	124.6	109.6	110.6	100.3 <sup>2</sup>
ED end-period (per cent of exports)	312.3	297.5	299.3	280.4	257.7 <sup>3</sup>
Schedule of ED payments <sup>4</sup> (mil. US dollars)	137.1	160.8	172.5	131.9 <sup>6</sup>	73.6 <sup>6</sup>
Actual ED repayment <sup>4</sup> (mil. US dollars)	111.4	154.7	171.1	115.8	51.7
ED service ratio (per cent of exports)					
- as scheduled	26.0	28.1	30.8	20.7 <sup>6</sup>	13.6 <sup>6</sup>
- actual	21.1	27.0	30.5	18.2	10.6
PED <sup>5</sup> end-period (mil. US dollars)	1 314.4	1 399.2	1 441.5	1 584.8	1 693.8
PED end-period (per cent of GDP)	107.2	102.3	94.2	98.2	88.9 <sup>2</sup>
PED end-period (per cent of exports)	249.2	244.3	257.2	249.0	228.3 <sup>3</sup>
Schedule of PED <sup>4</sup> (mil. US dollars)	53.4	77.6	71.7	86.7 <sup>6</sup>	61.1 <sup>6</sup>
Actual PED repayment <sup>4</sup> (mil. US dollars)	30.4	48.1	71.7	69.0	40.4
PED service ratio (per cent of exports)					
- as scheduled	10.1	13.5	12.8	13.6 <sup>6</sup>	11.3 <sup>6</sup>
- actual	5.8	8.4	12.8	10.8	8.3

\* preliminary data

<sup>1</sup> total external debt (including private and IMF loans)

<sup>2</sup> as against the projected annual GDP

<sup>3</sup> to projected export of goods and services

<sup>4</sup> includes payments on interest and principal

<sup>5</sup> public external debt (including debt on IMF loans)

<sup>6</sup> excluding restructured amount of bilateral debt under Paris Club agreement

**Table I.39: Structure of the External Debt of the Kyrgyz Republic***(end of period)*

	1997		1998		1999		2000		2001		2002		9 mon.03*	
	<i>mil. US\$</i>	<i>in percent of the total</i>	<i>mil. US\$</i>	<i>in percent of the total</i>	<i>mil. US\$</i>	<i>in percent of the total</i>	<i>mil. US\$</i>	<i>in percent of the total</i>	<i>mil. US\$</i>	<i>in percent of the total</i>	<i>mil. US\$</i>	<i>in percent of the total</i>	<i>mil. US\$</i>	<i>in percent of the total</i>
<b>Total external debt (I+II)</b>	<b>1 356.1</b>	<b>100.0</b>	<b>1 480.3</b>	<b>100.0</b>	<b>1 647.4</b>	<b>100.0</b>	<b>1 703.8</b>	<b>100.0</b>	<b>1 821.7</b>	<b>100.0</b>	<b>1 784.6</b>	<b>100.0</b>	<b>1 911.8</b>	<b>100.0</b>
<b>I. Public &amp; Government-guaranteed debt</b>	<b>951.5</b>	<b>70.2</b>	<b>1 093.3</b>	<b>73.9</b>	<b>1 314.4</b>	<b>79.8</b>	<b>1 399.2</b>	<b>82.1</b>	<b>1 611.3</b>	<b>88.5</b>	<b>1 584.8</b>	<b>88.8</b>	<b>1 693.8</b>	<b>88.6</b>
<b>I.1 Multilateral<sup>1</sup></b>	594.1	43.8	715.9	48.4	837.3	50.8	893.9	52.5	1 094.6	60.1	1 068.3	59.9	1 139.3	59.6
IMF	166.0	12.2	175.1	11.8	192.2	11.7	191.6	11.2	194.2	10.7	185.2	10.4	191.5	10.0
World Bank	265.0	19.5	330.4	22.3	341.2	20.7	374.8	22.0	466.9	25.6	457.0	25.6	500.3	26.2
EBRD	50.3	3.7	57.2	3.9	56.4	3.4	65.1	3.8	48.2	2.6	48.6	2.7	44.4	2.3
ADB	110.8	8.2	150.5	10.2	233.8	14.2	240.9	14.1	347.0	19.1	341.2	19.1	362.4	19.0
EEC <sup>2</sup>	0.0	0.0	0.0	0.0	0.0	0.0	0.0	0.0	0.0	0.0	0.0	0.0	0.0	0.0
Islamic Bank	1.8	0.1	1.7	0.1	6.9	0.4	10.3	0.6	20.0	1.1	18.6	1.0	21.2	1.1
IFAD	0.2	0.0	1.1	0.1	2.0	0.1	4.0	0.2	5.9	0.3	5.7	0.3	6.5	0.3
OPEC	0.0	0.0	0.0	0.0	0.0	0.0	2.3	0.1	6.9	0.4	6.7	0.4	7.2	0.4
Nordic Development Fund	0.0	0.0	0.0	0.0	4.8	0.3	4.9	0.3	5.5	0.3	5.3	0.3	5.8	0.3
<b>I.2 Bilateral</b>	333.6	24.6	353.7	23.9	430.3	26.1	465.2	27.3	506.8	27.8	506.5	28.4	543.4	28.4
<b>I.2.1 CIS countries</b>	154.0	11.4	152.9	10.3	170.9	10.4	178.6	10.5	182.9	10.0	182.4	10.2	185.0	9.7
Russia <sup>3</sup>	132.8	9.8	139.1	9.4	157.1	9.5	166.2	9.8	171.5	9.4	171.1	9.6	174.0	9.1
Uzbekistan	21.2	1.6	13.8	0.9	13.8	0.8	12.4	0.7	11.3	0.6	11.3	0.6	11.0	0.6
Kazakhstan <sup>2</sup>	0.0	0.0	0.0	0.0	0.0	0.0	0.0	0.0	0.0	0.0	0.0	0.0	0.0	0.0
Turkmenistan <sup>2</sup>	0.0	0.0	0.0	0.0	0.0	0.0	0.0	0.0	0.0	0.0	0.0	0.0	0.0	0.0
<b>I.2.2 Other countries (except for CIS)</b>	179.6	13.2	200.9	13.6	259.4	15.7	286.6	16.8	323.9	17.8	324.0	18.2	358.4	18.7
Turkey	45.3	3.3	41.0	2.8	41.0	2.5	41.0	2.4	44.9	2.5	44.5	2.5	45.4	2.4
Japan <sup>3</sup>	99.5	7.3	116.0	7.8	161.9	9.8	183.5	10.8	191.5	10.5	197.0	11.0	217.8	11.4
Germany <sup>3</sup>	20.3	1.5	23.8	1.6	21.1	1.3	20.4	1.2	28.8	1.6	26.5	1.5	34.1	1.8
Switzerland <sup>2</sup>	0.2	0.0	0.0	0.0	0.0	0.0	0.0	0.0	0.0	0.0	0.0	0.0	0.0	0.0
Pakistan	10.0	0.7	10.0	0.7	10.0	0.6	8.9	0.5	8.4	0.5	8.4	0.5	8.4	0.4
China	3.2	0.2	2.5	0.2	1.5	0.1	1.2	0.1	11.3	0.6	10.3	0.6	11.3	0.6
France <sup>3</sup>	1.0	0.1	4.4	0.3	3.8	0.2	3.5	0.2	4.3	0.2	4.1	0.2	4.6	0.2
Kuwait Fund	0.1	0.0	0.5	0.0	1.3	0.1	7.7	0.4	15.2	0.8	13.0	0.7	15.5	0.8
India	0.0	0.0	2.8	0.2	2.8	0.2	1.2	0.1	0.9	0.1	0.9	0.1	1.0	0.1
Korea	0.0	0.0	0.0	0.0	13.2	0.8	12.7	0.7	12.8	0.7	13.5	0.8	14.6	0.8
Denmark <sup>3</sup>	0.0	0.0	0.0	0.0	2.7	0.2	6.5	0.4	5.8	0.3	5.8	0.3	5.8	0.3
<b>I.3 Government-guaranteed debt</b>	23.8	1.8	23.6	1.6	46.8	2.8	40.1	2.4	9.9	0.5	10.1	0.6	11.1	0.6
<b>II. Private non-guaranteed debt</b>	<b>404.6</b>	<b>29.8</b>	<b>387.1</b>	<b>26.1</b>	<b>333.0</b>	<b>20.2</b>	<b>304.6</b>	<b>17.9</b>	<b>210.4</b>	<b>11.5</b>	<b>199.7</b>	<b>11.2</b>	<b>218.1</b>	<b>11.4</b>

\*preliminary data

<sup>1</sup> creditors acting on a multilateral basis including international financial institutions<sup>2</sup> creditors to whom the Kyrgyz Republic does not have any liabilities to their credits<sup>3</sup> Paris Club members

**Table 40: International Investment Position of the Kyrgyz Republic  
as of January 1, 2003 and October 1, 2003**

(mil. US dollars)

	Position as of 01.01.03	Transactions	Price changes	Exchange rate changes	Other adjustments	Position as of 01.10.03
A	1	2	3	4	5	6
<b>A. Assets</b>	556.2	133.6	3.5	24.2	19.4	736.8
Direct investment abroad	39.3	0.0	0.0	0.0	0.0	39.3
Portfolio investments	6.2	-8.1	0.0	0.0	19.3	17.4
Financial derivatives	0.0	0.0	0.0	0.0	0.0	0.0
Other investments	194.0	107.5	0.0	17.9	0.1	319.5
Currency and deposits	88.7	96.0	0.0	2.3	0.0	187.0
Loans	6.6	1.2	0.0	-0.3	0.1	7.6
Monetary authorities	0.0	0.0	0.0	0.0	0.0	0.0
General government	1.2	-0.2	0.0	0.0	0.1	1.1
Banks	5.4	1.4	0.0	-0.3	0.0	6.5
Other sectors	0.0	0.0	0.0	0.0	0.0	0.0
Trade credits	73.0	11.3	0.0	15.4	0.0	99.7
Other assets	25.7	-1.0	0.0	0.4	0.0	25.2
Reserve assets	316.7	34.3	3.5	6.3	0.0	360.7
Monetary gold	28.5	0.0	3.5	0.0	0.0	31.9
SDR	0.6	11.4	0.0	0.0	0.0	12.1
Reserve position in IMF	0.0	0.0	0.0	0.0	0.0	0.0
Foreign exchange	287.6	22.8	0.0	6.3	0.0	316.7
<b>B. Liabilities</b>	2 322.7	141.7	-19.0	78.3	13.5	2 537.2
Direct investment in KR	453.7	11.6	0.0	0.0	0.8	466.1
Portfolio investments	0.5	16.2	0.0	0.5	0.0	17.2
Financial derivatives	29.7	12.0	-19.0	0.0	0.0	22.7
Other investments	1 838.8	101.9	0.0	77.8	11.5	2 030.0
Currency and deposits	27.1	54.9	0.0	0.4	0.0	82.4
Loans	1 694.2	48.2	0.0	65.9	0.0	1 808.3
Monetary authorities	185.2	8.2	0.0	-1.9	0.0	191.5
General government	1 399.6	39.8	0.0	62.9	0.0	1 502.3
Banks	10.0	-4.6	0.0	4.8	0.0	10.1
Other sectors	99.4	4.8	0.0	0.2	0.0	104.4
Trade credits	117.3	0.1	0.0	11.5	11.5	140.4
Other liabilities	0.1	-1.2	0.0	0.0	-1.1	0.0
<b>C. Net International Investment Position (A-B)</b>	-1766.5	-8.0	22.4	-54.2	5.9	-1800.3

**Table 41: Developments in Foreign Assets and Liabilities of the Kyrgyz Republic, 1999 - 9 months of 2003**  
(mil. US dollars)

	Position 01.01.99	Position 01.01.00	Position 01.01.01	Position 01.01.02	Position 01.01.03	Position 01.10.03
<b>A. Assets</b>	366.1	405.3	491.9	606.5	556.2	736.8
Direct investment abroad	22.6	28.7	33.2	39.3	39.3	39.3
Portfolio investments	0.2	0.2	3.1	15.2	6.2	17.4
Financial derivatives	7.8	7.3	19.5	17.2	0.0	0.0
Other investments	146.9	120.3	175.0	249.7	194.0	319.5
Currency and deposits	29.2	30.8	70.7	79.3	88.7	187.0
Loans	0.0	0.0	2.4	2.3	6.6	7.6
Monetary authorities	0.0	0.0	0.0	0.0	0.0	0.0
General government	0.0	0.0	2.4	2.3	1.2	1.1
Banks	0.0	0.0	0.0	0.0	5.4	6.5
Other sectors	0.0	0.0	0.0	0.0	0.0	0.0
Trade credits	105.9	78.5	99.3	105.4	73.0	99.7
Other assets	11.8	11.1	2.6	62.7	25.7	25.2
Reserve assets	188.5	248.8	261.1	285.2	316.7	360.7
Monetary gold	25.2	24.2	22.8	23.0	28.5	31.9
SDR	0.2	5.1	0.7	1.3	0.6	12.1
Reserve position in IMF	0.0	0.0	0.0	0.0	0.0	0.0
Foreign exchange	163.1	219.5	237.6	260.9	287.6	316.7
<b>B. Liabilities</b>	1 962.4	2 127.7	2 143.0	2 179.2	2 322.7	2 537.2
Direct investment in KR	383.3	427.7	438.6	427.3	453.7	466.1
Portfolio investments	0.9	0.8	1.1	2.3	0.5	17.2
Financial derivatives	0.0	0.0	0.0	0.0	29.7	22.7
Other investments	1 578.2	1 699.2	1 703.2	1 749.5	1 838.8	2 030.0
Currency and deposits	10.8	11.2	4.9	8.4	27.1	82.4
Loans	1 381.0	1 544.9	1 563.4	1 602.1	1 694.2	1 808.3
Monetary authorities	175.1	192.2	191.6	179.3	185.2	191.5
General government	918.2	1 122.2	1 207.5	1 262.1	1 399.6	1 502.3
Banks	8.1	4.9	1.6	0.0	10.0	10.1
Other sectors	279.7	225.6	162.6	160.6	99.4	104.4
Trade credits	186.3	143.1	128.4	136.9	117.3	140.4
Other liabilities	0.0	0.0	6.5	2.2	0.1	0.0
<b>C. Net International Investment</b>						
<b>Position (A-B)</b>	-1 596.3	-1 722.4	-1 651.1	-1 572.7	-1 766.5	-1 800.3

**Table II.1: Sources of Information Used by the National Bank  
for Compilation of the Balance of Payments of the Kyrgyz Republic**

Items of the Balance of Payments	Sources of information	Contents of information
<b>Current account</b>		
<b>Commodities</b>		
Export of goods (f.o.b.) export	NSC	data on export of goods (f.o.b.) based on SCI data and enterprises
commodities purchased in ports	NSC	data on export of bunker fuel based on reports of enterprises according to form 1-services
nonmonetary gold	NSC	data on export of the nonmonetary gold based on SCI data
Import of goods (f.o.b.) import (c.i.f.)	NSC	data on import of goods (c.i.f.) based on SCI and enterprise data
value adjustment	NSC, NBKR	NBKR estimate of the share of transport and insurance services in import at c.i.f. prices on the basis of survey of enterprises
commodities purchased in ports	NSC	data on import of bunker fuel based on reports of enterprises according to form 1-services
<b>Services</b>		
Transportation services	NSC, CB	data on enterprise reports according to form 1-services and the NBKR assessment of the share of transportation costs in import at c.i.f. prices based on surveys of enterprises; data based on banking statistics on transportation services
Travels	NSC	estimate in compliance with the methodology based on the number of residents arriving (leaving) in the Republic (from the Republic)
Communication services	MTC	data on international communication services according to reporting form 1-services (communication)
Construction	NSC, enterprises	data of enterprises enjoying services of non-resident construction companies according to form 1-INSU and from construction organizations rendering services abroad according to form 1-MSU; data from some large enterprises
Insurance services	NSC, enterprises, CB	NBKR assessment by the share of costs in import at c.i.f. prices on the basis of surveys of enterprises; data from enterprises and banking statistics
Financial services	NBKR, CB	NBKR data on rendering and receiving of financial services; data from banking statistics
Computer and information services	CB	data on information and computer services based on banking statistics
Government services	MFA, CB	data on maintenance expenses of the KR representative offices abroad; data on expenses of foreign representative offices in the KR

**Table II.1: (continued)**

<b>Items of the Balance of Payments</b>	<b>Sources of information</b>	<b>Contents of information</b>
Business services	NSC, CB, enterprises	data on other business technical services, collected from enterprises according to reporting form 8 VES-services; data from some large enterprises
including technical assistance	IMF, MF	estimates on technical assistance being received, data of organizations, which incarnate investment projects
Other services	NSC, CB	data on other services collected from enterprises according to reporting form 8 VES-services; data on other services from banking statistics
<b>Income</b>		
Employee compensation	NSC, CB, enterprises	data of enterprises on non-resident employee compensation, paid to residents going abroad ; data from banking statistics on transfers abroad
Income on investment		
Income on direct investment	NSC, CB	data on direct investment income collected from joint ventures and foreign enterprises according to reporting form 1-SP; data from banking statistics on direct investment income
Income on portfolio investment	NBKR, CB	data on income of nonresidents earned from investment in the KR securities; data from banking statistics on transactions with securities
Other investment income		
Interest on loans		
Monetary authorities	NBKR	data on interest on IMF loans
General government	MF, NBKR, enterprises	data on interest on credits to the public sector; data from enterprises on interest on Government-guaranteed loans
Banks	CB	data of banking statistics on interest on interbank loans
Other sectors	Enterprises	data on interest on loans to the private sector
Other investment income	NBKR, CB, enterprises	data on profit and expenses of the NBKR, relating to international reserve management; incomes of CB and enterprises from assets abroad
<b>Current transfers</b>		
Humanitarian aid	NSC, enterprises	data on rendered humanitarian aid based on SCI data
Technical assistance	IMF	estimates of technical assistance being received
Other grants	NBKR	data on grants in cash
Contributions to international organizations	MF	data on payments made to international and CIS organizations
Workers' remittances	MT&C, CB	data on household postal-telegraph transfers abroad and from abroad according to form 1-services (communications)



**Table II.1: (continued)**

<b>Items of the Balance of Payments</b>	<b>Sources of information</b>	<b>Contents of information</b>
<b>Current and financial account</b>		
<b>Capital transfers</b>		
Commodity grants	NSC	estimate of the share of capital goods in the total volume of commodity grants
Migration related transfers	NSC	NBKR estimate of migrants' transfers based on NSC data on the number of arriving and departing migrants
Forgiveness of debt	Enterprises	data of enterprises on debt service, to non-residents
<b>Direct investments</b>		
Abroad	CB	data from banking statistics on residents' direct investment abroad
To the Kyrgyz Republic	NSC, CB, enterprises	data on direct investment collected from joint ventures and foreign enterprises according to reporting form 1-SP; data from banking statistics on direct investment into the banking sector; data of some large joint ventures
<b>Portfolio investments</b>		
Promissory notes	NBKR, CB, SCSM	data on purchase and redemption of the KR securities by non-residents; data from banking statistics on transactions with securities
<b>Financial derivatives</b>		
	Enterprises	data of enterprises on transactions with financial derivatives
<b>Other investments</b>		
Assets		
Money in cash and deposits		
Banks	CB	data from banking statistics on foreign assets of commercial banks
Other sectors	Enterprises	data on balances of resident enterprises on accounts of banks abroad
Trade loans	NSC	data on mutual settlements of enterprises (debtors' indebtedness)
Other assets		
Monetary authorities	NBKR	data on the NBKR foreign assets not included in reserves
General government	MF	data on payments to international organizations
Liabilities		
Money in cash and deposits		
Banks	CB	data from banking statistics on foreign liabilities of commercial banks
Trade loans	NSC	data on mutual settlements of enterprises (debtors' indebtedness)
Loans		
Monetary authorities	NBKR	data on IMF loans
General government	MF, NBKR, enterprises	data on loans received/repaid by the public sector or under guarantee of the Government
Banks	CB	data from banking statistics on loans received by commercial banks
Other sectors	Enterprises	data on loans received/repaid under no guarantee of the Government
Overdue debts	MF, CB, enterprises	data on overdue payments
Reserve assets	NBKR	data on international reserves and their structure